



Transnet SOC Limited
Transnet RME

REQUEST FOR QUOTATION

TFR RME RFQ Board
TFR RME RFQ Board
Transnet Freight Rail - RME
PROCUREMENT DEPARTMENT

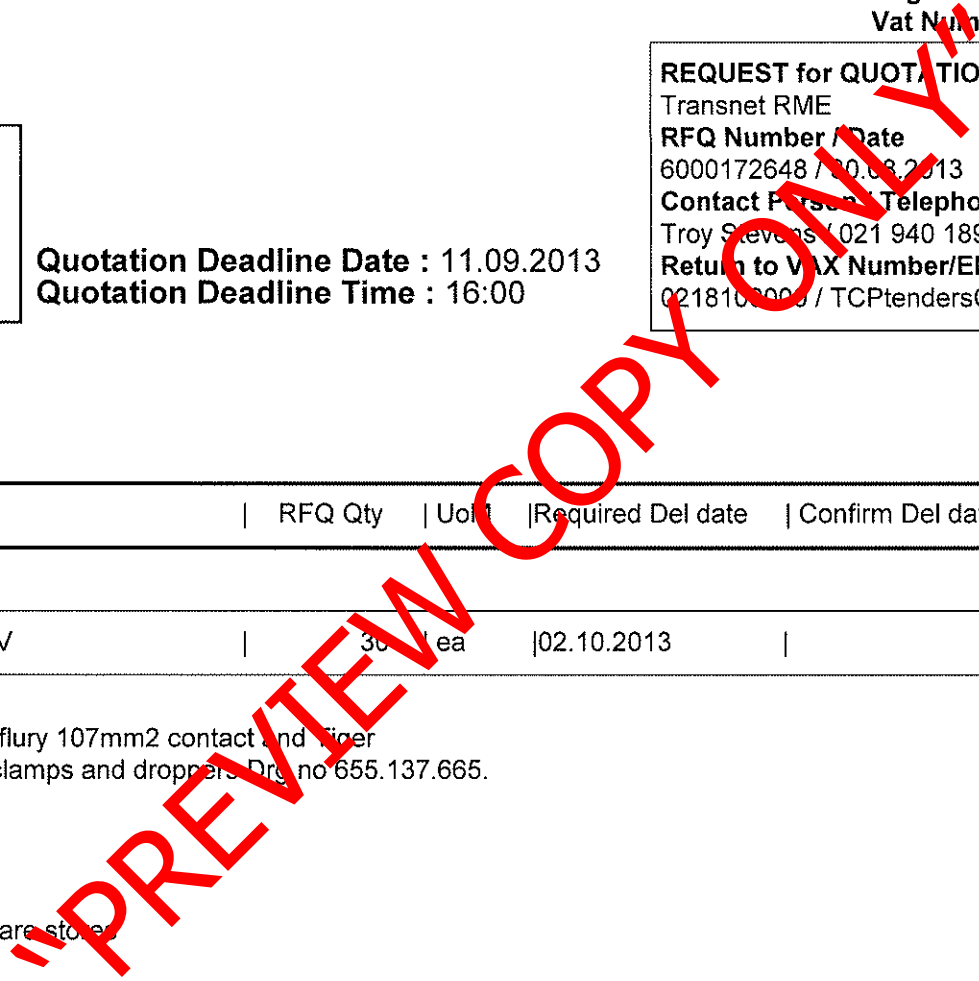
Registration Number: 1990/000900/06
Vat Number : 4720103177

Attention:

Telephone Number :
Fax Number :
Vendor Number :500000

Quotation Deadline Date : 11.09.2013
Quotation Deadline Time : 16:00

REQUEST for QUOTATION
Transnet RME
RFQ Number / Date
6000172648 / 09.08.2013
Contact Person / Telephone
Troy Stevens / 021 940 1892
Return to FAX Number/EMAIL
0218100000 / TCPTendersCapeTown@Transnet.net



Item	Material	Description	RFQ Qty	Unit	Required Del date	Confirm Del date	Unit Price Excl	Total Price Excl
00010		Insulator 25KV	30	lea	02.10.2013			

Insulator 25KV
Section insulator 25kv Arthur flury 107mm2 contact and tiger
catenary inc rods, insulators clamps and droppers. Drg no 655.137.665.
Jeff Niemand 0834556385

Project number 1414792

Delivery address Bellville Square store

Requester and Delivery Address:

Richard Carswell - Transnet Freight Rail (RME)
Deliver to Bellville Square Bellville South
Western Cape

Tel: Richard Carswell 0219401813 & 0834556391
Cell: Jeff Niemand 0834556385



Transnet SOC Limited
 Transnet RME
 TFR RME RFQ Board
 TFR RME RFQ Board
 Transnet Freight Rail - RME
 PROCUREMENT DEPARTMENT
 0000

REQUEST FOR QUOTATION

Registration Number: 1990/000900/06
 Vat Number : 4720103177

Attention:
 Telephone Number :
 Fax Number :
 Vendor Number :500000

Quotation Deadline Date : 11.09.2013
Quotation Deadline Time : 16:00

REQUEST for QUOTATION
 Transnet RME
RFQ Number / Date
 6000172648 / 30.08.2013
Contact Person / Telephone
 Troy Stevens / 021 940 1892
Return to FAX Number/EMAIL
 0218120000 / TCPtendersCapeTown@Transnet.net

Item	Material	Description	RFQ Qty	UoM	Required Del date	Confirm Del date	Unit Price Excl	Total Price Excl
------	----------	-------------	---------	-----	-------------------	------------------	-----------------	------------------

Email: richard.carswell@transnet.net
 Fax: 021 9401938

If you are unable to quote for this enquiry, please submit a NO QUOTE, with a short reason, if possible, for not being able to quote.
 Otherwise we look forward to receive your quote by the date and time stated.

"PREVIEW COPY ONLY"



REQUEST FOR QUOTATION

Transnet SOC Limited
 Transnet RME
 TFR RME RFQ Board
 TFR RME RFQ Board
 Transnet Freight Rail - RME
 PROCUREMENT DEPARTMENT
 0000

Registration Number: 1990/000900/06
 Vat Number : 4720103177

Attention:

Telephone Number :
 Fax Number :
 Vendor Number : 500000

Quotation Deadline Date : 11.09.2013
 Quotation Deadline Time : 16:00

REQUEST for QUOTATION

Transnet RME
RFQ Number / Date
 6000172648 / 30.08.2013
Contact Person / Telephone
 Troy Stevens / 021 940 1892
Return to FAX Number/EMAIL
 0218100000 / TCPtendersCapeTown@Transnet.net

Delivery Address

TFR RME Cape Town
 De Gatt Complex, Behind Propne
 Bellville South, Cape Tow
 7530

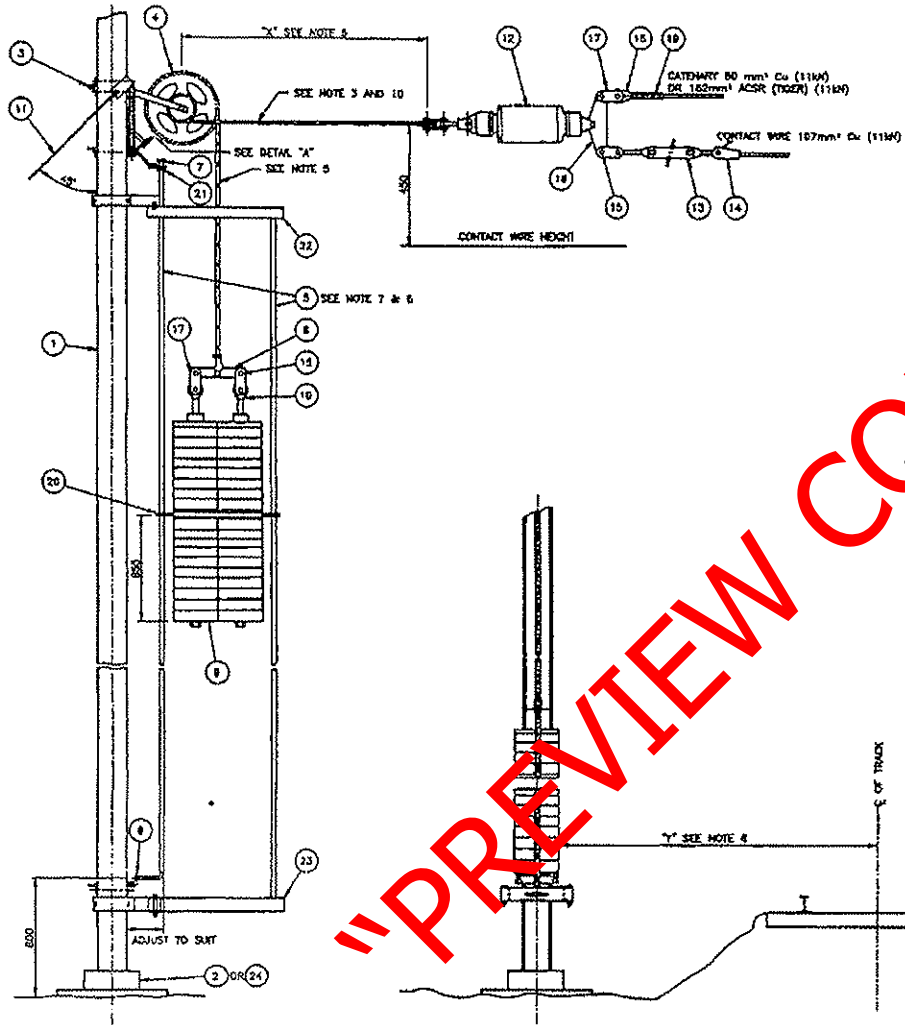
This RFQ is subject to the following conditions:

1. Price/s : The price/s quoted in SA currency and is excluding of V.A.T
2. Delivery : The price/s quoted should include delivery cost to the delivery address stated on the RFQ
3. Returnables : A valid tax clearance certificate and BBBEE certificate from a SANAS accredited verification agency attached to quotation for all quotes above R30 000.
Please note that only the official Transnet RFQ will be accepted and all other correspondence to be attached to the original
4. Safety : To confirm to Transnet Capital Projects Health & Safety plan and specification; HAS-std-0001, copy available on request.
5. Confirmation: To confirm your participation in this tender process please sign and return this document as immediate effect prior to the quotation deadline.
6. Negotiations: The Employer may elect to negotiate the final terms of the contract/order with the preferred tenderer in accordance with Clauses F.2.17 and F.3.13 of the CIDB Standard Conditions of Tender. A copy of which is available upon request.

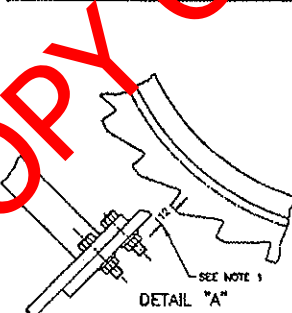
Signature _____

Date _____

Manganese Ph1 WT Device CEE-TPB-14		
Drg No	Description	Qty
TMF523	Pulley WT with sealed bearings	100
BBB0445/6/7	Support Frame Top and Bottom complete	200
	Guide rod for weights Galv pipe 25mmdia x 3.5 wall x 6m L	200
TMHF99	Yoke Plate for weights	100
TMFB190	Link Plate for weights	100
BBB0305	Eye Rod for weights	100
TMFB191	Weight Collar	100
BBB0444	Bracket Assembly WT Mounting concrete mast	100
BBO442#1	Clamping Bracket WT Bottom L=350 Hole crs 280mm	100
BBO442#2	Clamping Bracket WT Top L=350 Hole crs 280mm	100
1423337	Bottom Plate WT Weights 660x252x12	100
BBB135	Staywire attachment	100
BBB136	Clamping Bracket Stay	100
TMFB177#1	Fish Plate	200
TMFB177#2	Adjusting plate	100
	Concrete weights x28 per set 25kg ea 350mm dia	100



ITEM	DESCRIPTION	QTY	STORES ITEM NO	DRG NO CEE-	AMENDMENTS	
					NO	DATE
1	MAST UNIVERSAL COLUMN 218 x 208 x 21.40/m	1				
2	FOUNDATION, CONCRETE	1				
3	BRACKET, MOUNTING OF WEIGHT TENSIONING DEVICE ONTO UIC MAST	1				
4	PULLEY 3:1 MECHANICAL ADVANTAGE	1				
5	STEEL TUBE GALV. 43.2 D.I.D. x 3.3 WALL THICKNESS (SEE NOTE 7 & 8)	2				
6	ASSEMBLY, FASTENING PARTS, GUIDE TUBE	1				
7	CAP (1/2 SABS 500 TABLE 20 SIZE 33)	1				
8	LINK PLATE - BALANCE WEIGHT	1				
9	WEIGHT 23kg CONCRETE #330	20				
10	EYE ROD FOR BALANCE WEIGHTS	2				
11	STAY WIRE ARRANGEMENT	1				
12	INSULATOR SOLID CORE 25kV	2	54/1823			
13	INSULATOR 452mm TAKE-UP	2	54/1823			
14	INSULATED CORE 107mm ² CONTACT WIRE	1	54/4626			
15	PLW, STRAIGHT, WEADED, CLEWS #18	11	54/4626			
16	FOKE PLATE	1				
17	ADAPTOR PLATE (LEAK STRAP 80mm)	8	54/2171			
18	CHUBBLE	1	54/110723			
19	CLAMP, ELECTRICAL CONDUCTOR, 18mm	1				
20	WELDING COLLAR, DOUBLE COLLAR, WEIGHT TENSION DEVICE	1				
21	LOCKING RING, ASS'Y, WEIGHT TENSION ARRANGEMENT, GUIDE TUBE	1				
22	TOP SUPPORT FRAME FOR GUIDE ROD	1				
23	BOTTOM SUPPORT FRAME FOR GUIDE ROD	1				
24	FOUNDATION, CONCRETE	1				



- NOTES
1. TO BE ADJUSTED AFTER ERECTION.
 2. TOTAL MASS OF WEIGHTS 750kg.
 3. GALVANISED STEEL ROPES SUPPLIED WITH WEIGHT TENSIONING DEVICE MUST UNDER NO CIRCUMSTANCES BE CUT TO SHORTER LENGTHS.
 4. FOR METHOD TO MOUNT WEIGHTS, SEE DRG NO CEE-TP-259.
 5. FOR ADJUSTMENT CHARTS, SEE DRG NO CEE-TP-262.
 6. DIMENSION 'Y' MUST NOT BE LESS THAN THE MINIMUM CLEARANCE REQUIRED FOR THE PARTICULAR CONDITIONS AS SET OUT ON ANNEXURE 1 OF THE "PERMANENT WAY INSTRUCTIONS".
 7. LENGTH TO BE DETERMINED ON SITE.
 8. USE STANDARD THREADED WATER PIPE AND MOUNT WITH ONE THREADED END ON TOP.
 9. THIS DRG TO BE READ IN CONJUNCTION WITH SPEC CEE-0131.85/1.
 10. STEEL ROPE TO HAVE MINIMUM TENSILE STRENGTH OF 57KN UNLESS OTHERWISE STATED.

DO NOT SCALE DIMENSIONS
 GEN TOL UNITS: 1. ANGLES: °
 ORIGIN OF SPACER: CDD. IN 5 WOOD. DATE: 01-1-77
 Dwg. No. 24 for CEE-TP-14

WEIGHT TENSIONING ARRANGEMENT
 DOUBLE COLLAR CONCRETE WEIGHTS WITH DOUBLE GUIDES
 25kV AC ELECTRIFICATION

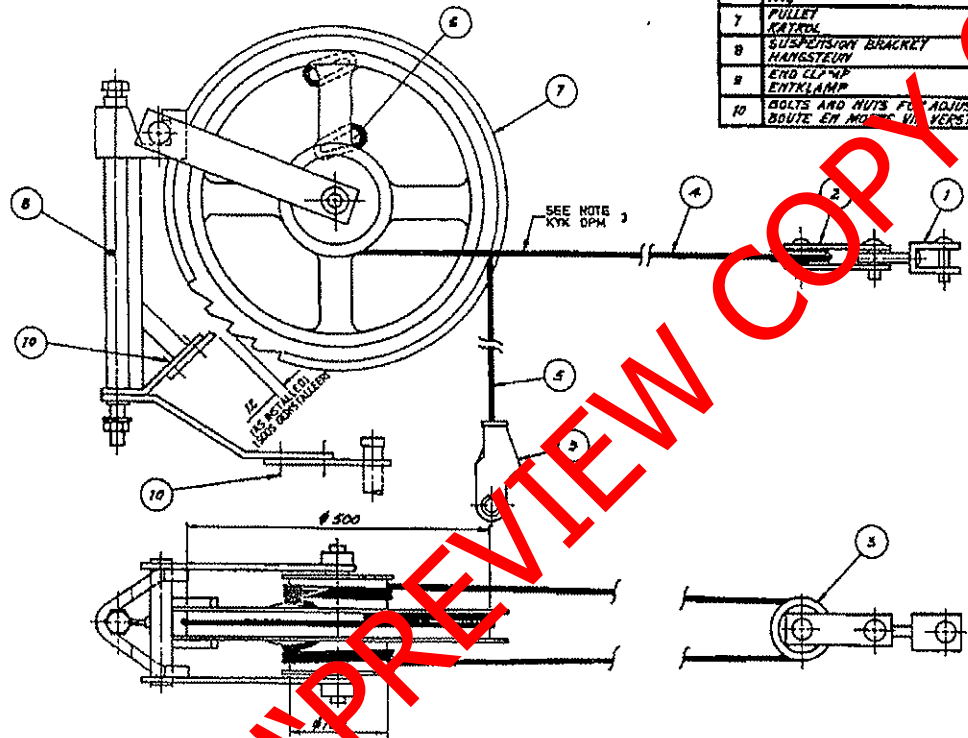
DR. INFRASTRUCTURE (ELECTRICAL) SPOORNET

DIMENSIONS: mm
 SCALE: 1:10
 A1
 DRAWING NO CEE-TPB-14
 SHEET - OF -

BBB0444

BBB0445/6/7

ITEM	DESCRIPTION-BESKRYWING	QTY	TORES ITEM	DRAWING NO CEE	AMENDMENTS
		AVL	MEGASTRITEM	TEKENS	WYKEDWID
1	SWIVEL FITTING DRAAIASSTUK	1			NO. NAME DATE
2	LINK PLATES SKAKELSTROKE	1			1 [Signature] 8412-07
3	PULLEY KATROL Ø85	1			ITEM 4,5 AND NOTES WERE STAINLESS STEEL. ITEM 4,5 EN OPM 3 WAS VLEKRYTE STAAL. D O REF T1/86/108. TK-VERW
4	GALVANISED STEEL ROPE GEGALVANISEERDE STAALKABEL	1			
5	GALVANISED STEEL ROPE GEGALVANISEERDE STAALKABEL	1			
6	WIRE	2			
7	PULLEY KATROL	1			
8	SUSPENSION BRACKET HANGSTEUN	1			
9	END CLAMP EINKLAMP	1			
10	BOLTS AND NUTS FOR ADJUSTMENT BOUTE EN MOETS VUR VERSTELLING	4			



NOTES/OPMERKINGS

- PULLEY TO BE SUPPLIED WITH ITEMS 4,5 AND 9
MADE-UP
KATROL MOET VOORSEN WORD MET ITEMS 4, 5 EN
9 AFGEMAAK.
- EFFECTIVE LENGTH OF ROPES AFTER MAKE-UP:
EFFEKTIEWE LENGTE VAN TOUE NA AFMAAK:
ITEM 4 — 5 112 mm
ITEM 5 — 6 156 mm
- EFFECTIVE TENSILE STRENGTH OF GALVANISED
STEEL ROPE MUST NOT BE LESS THAN 57KN,
UNLESS OTHERWISE STATED
EFFEKTIEWE TREKSTERKTE VAN GEGALVANISEERDE STAALKABEL
MOET NIE MINDER AS 57KN WEES NIE TENSY ANDERS VERMELD.
- THIS DRG TO BE READ IN CONJUNCTION WITH SPEC
NO CEE.0131-BSII.
NIEERDIE TEK MOET SAAM MET SPES NO CEE.0131-BSII
GELEES WORD.

DRN. GET. H. van Veenen		GEN. TOLERANSIES: LK 1/1	
TRCO. MGT. H. van Veenen		ALG. TOLERANSIES: ANG/MOEX	
CRD. NOB. 1/2	DATE DAYUM 88-06-14	ENR. IN 2.8.	
CHIEF ELECTRICAL ENGINEER ELEKTRIESE HOOFDINGENIEUR		JOHANNESBURG	
SOUTH AFRICAN TRANSPORT SERVICES SUID-AFRIKAANSE VERVOERDIENSTE			

ELECTRIFICATION TYPES E, F, G AND H
PULLEY, 3:1 MECHANICAL RATIO.
 WEIGHT TENSIONING DEVICE
 ELEKTRIFIKASITIPES E, F, G EN H
KATROL, 3:1 MEGANIESE VERHOUDING.
 GEWIGSPANNINGTOESTEL

CEE-TP-257
 CEE-TP-263
 CEE-TP-264
 CEE-TP-265
 CEE-TP-266
 CEE-TP-267
 ASSY DRG
 SAMEST-TEK

ELECTRIFICATION TYPES REF
 DRG NO CEE-MA-28 SHT 7B
 ELEKTRIFIKASITIPES VERW
 TEK NO CEE-MA-388 VEL 7B

MOODLUM ITEM NO.
 (M) 34/10763

PREVIOUS ITEM NO.
 VORIGE

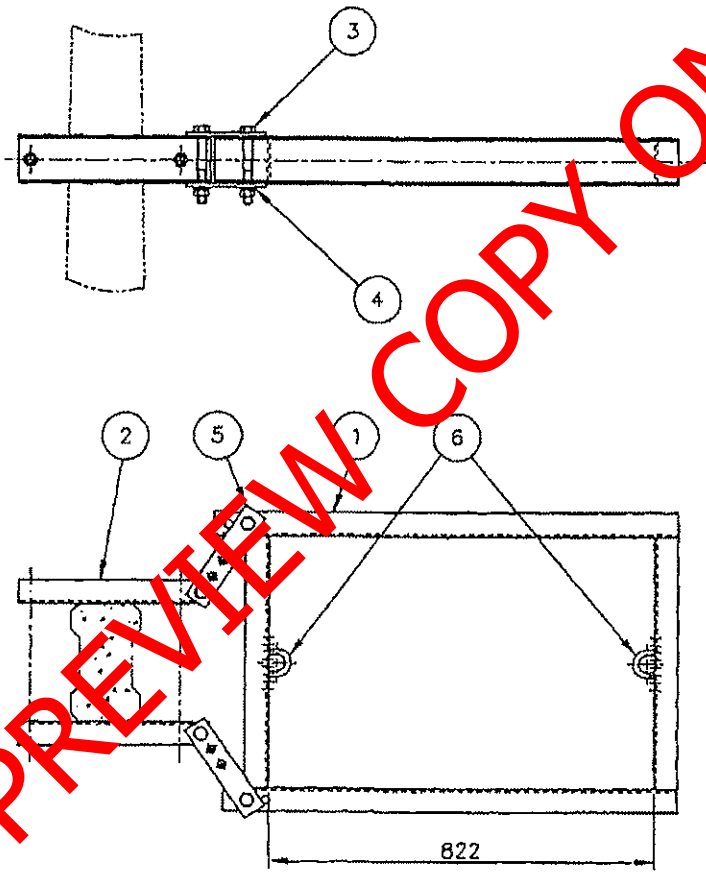
DRAWING NO. CEE-
 TEKENS
TMF-523

SHEET OF
 VEL VAN

TMF-523

ITEM	DESCRIPTION	QTY	STORES ITEM NO	DRG NO
1	FRAME	1		BBB0445
2	MAST ATTACHMENT BRACKET	2		BBB0447 ITEM 1
3	BOLT & NUT, STEEL, HEX, GALV, M16 x 155 LG	4		
4	WASHER, LOCK, STEEL, ROUND, GALV, M16	4		
5	LINK STRAP	4		BBB0447 ITEM 2
6	U-BOLT, STEEL, M12	2		CEE-TX-97

VERSION		
NO	NAME	DATE



"PREVIEW COPY ONLY"

DIMENSIONS: mm
SCALE: 1:10

A3

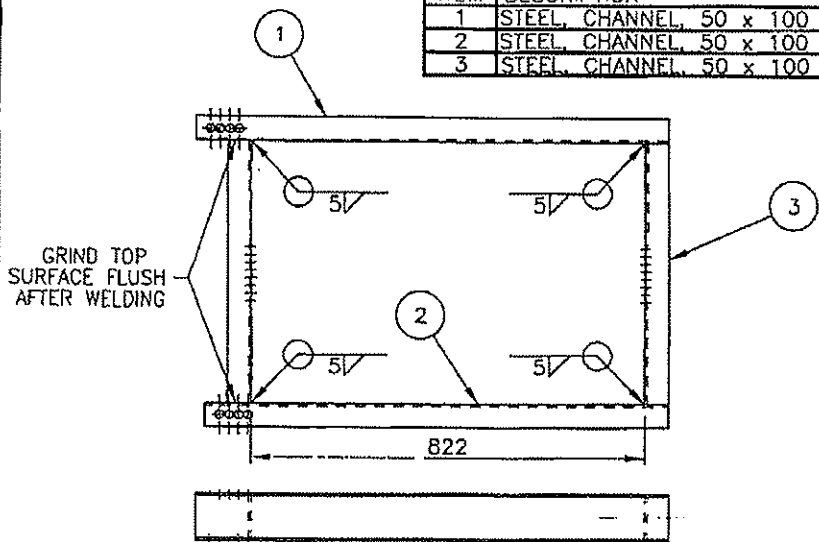
DRAWING NO
BBB0445
VERSION 1

DO REF: CDO/275 GEN TOL: LIN± 2 ANG± —
DRN: C L BUCKLE CKD: J v DYK DATE: 99-12-10
ENG: [Signature] for CHIEF ENG

CENTRAL DRAWING OFFICE
INFRASTRUCTURE SPOORNET

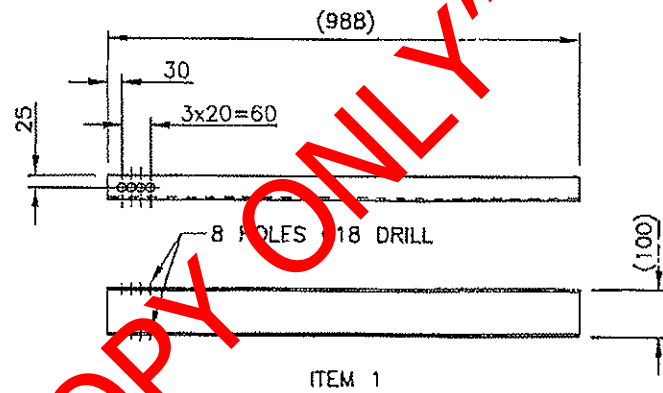
TOP & BOTTOM SUPPORT FRAME FOR GUIDE RODS
DOUBLE COLUMN WEIGHTS
CONCRETE MAST, WEIGHT TENSIONING DEVICE

ITEM	DESCRIPTION	QTY	STORES ITEM NO	DRG NO	VERSION		
1	STEEL CHANNEL, 50 x 100 x 988 LG	1			NO	NAME	DATE
2	STEEL CHANNEL, 50 x 100 x 968 LG	1					
3	STEEL CHANNEL, 50 x 100 x 540 LG	2					

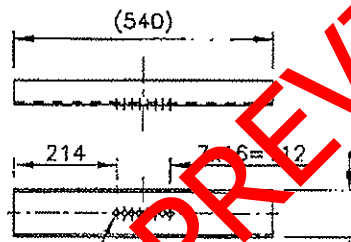


ASSEMBLY

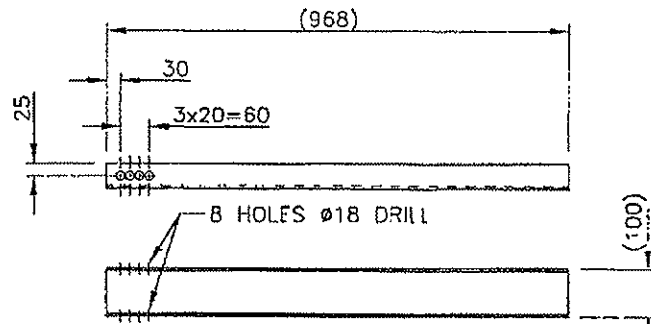
FINISH
ZINC COAT TO SABS 763 FOR CONDITIONS IN SITU AFTER ASSEMBLY



ITEM 1



ITEM 3



ITEM 2

DIMENSIONS: mm
SCALE: 1:10



DO REF: CDO/275	GEN TOL: LIN± 1	ANG±
DRN: C L BUCKLE	CKD: v DYK	DATE: 29-12-12
ENG:		for CHIEF ENG

CENTRAL DRAWING OFFICE
INFRASTRUCTURE

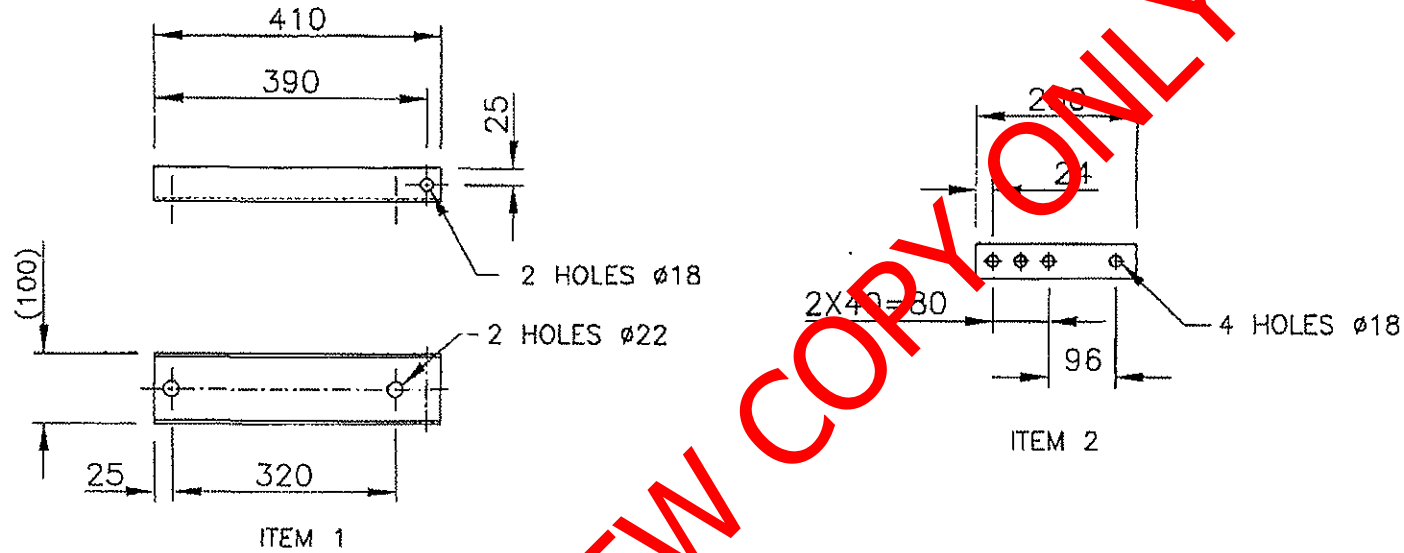


FRAME

TOP & BOTTOM SUPPORT FRAME FOR GUIDE RODS
CONCRETE MAST, WEIGHT TENSIONING DEVICE

DRAWING NO
BBB0446
VERSION 1

ITEM	DESCRIPTION	QTY	STORES ITEM NO	DRG NO	VERSION		
1	STEEL, CHANNEL, 50 x 100 x 410 LG	1	_____	_____	NO	NAME	DATE
2	STEEL, FLAT, 50 x 8 THK	1	_____	_____			



FINISH
ZINC COAT TO SABS 763 FOR CONDITIONS IN SITU.

"PREVIEW COPY ONLY"

DIMENSIONS: mm
SCALE: 1:10



DRAWING NO
BBB0447
VERSION 1

DO REF: CDO/275	GEN TOL: LIN ± 1	ANG $\pm -$
DRN: C L BUCKLE	CKD: N v DYK	DATE: 99-12-10
ENG: <i>[Signature]</i>	for CHIEF ENG	
CENTRAL DRAWING OFFICE INFRASTRUCTURE		SPOORNET

MAST ATTACHMENT BRACKET
TOP & BOTTOM SUPPORT FRAME FOR GUIDE RODS
CONCRETE MAST, WEIGHT TENSIONING DEVICE

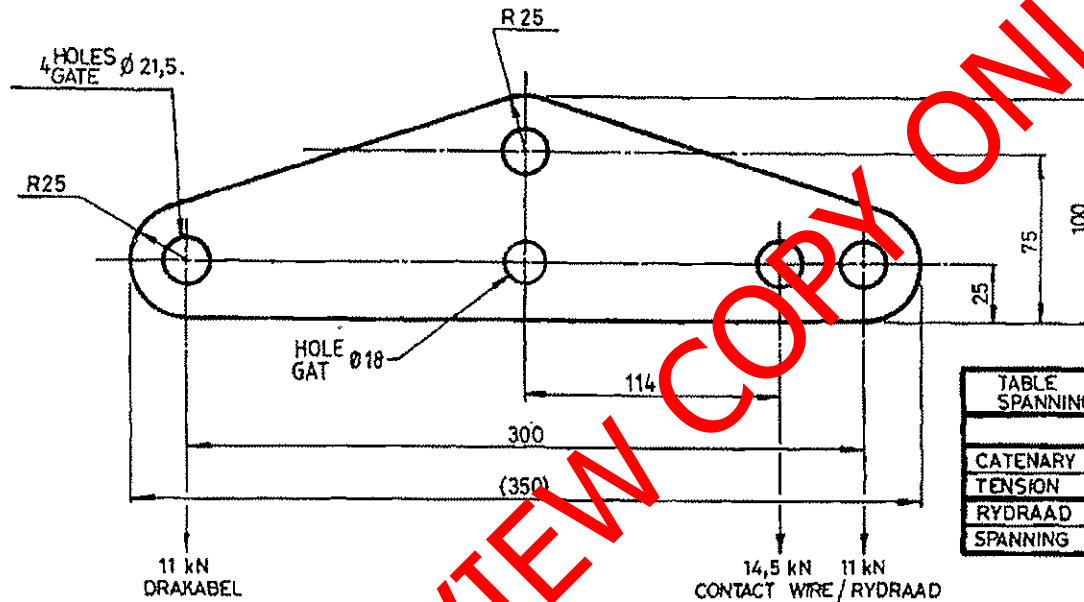


TABLE OF TENSIONS SPANNINGSTABEL		
	AC / WS	DC / GS
CATENARY	80mm ²	100mm ²
TENSION	11 kN	11 kN
RYDRAAD	107mm ²	161mm ²
SPANNING	11 kN	14,5 kN

DIMENSIONS : MILLIMETRES.
AFMETINGS : MILLIMETER.

MATERIAL - MATERIAAL

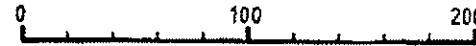
STEEL, FLAT 100 x 16 x 350 L.
STAAL, PLAT
SPEC. CME. 9 SYM. 7.
SPES. SIM.

STORES ITEM NO. (M) 11/12635
MAGASYN-

AFRICAN TRANSPORT SERVICES
SUID-AFRIKAANSE VERVOERDIENSTE

NOTE / OPM.

ZINC COAT TO SPEC. S.A.B.S. 763.
SINKBEDEK VOLG. SPES. S.A.B.S. 763.



DRN GET. B.J.vdWesthuizen	GEN. TOLERANCES : LIN. ± 0,5. ALG. TOLERANSIES : ANG/HOEK
TRCD NGT. B.J.vdWesthuizen	D.O. REF. T2/80/24 TK. VERW. IR.
CKO NGS. J.SWIEGERS.	DATE DATUM 31.03.08
CHIEF ELECTRICAL ENGINEER ELEKTRIESE HOOFINGENIEUR	JOHANNESBURG.

YOKE, PLATE
STANDARD WEIGHT TENSIONING DEVICE
JUK, PLAAT
STANDAARD GEWIGSPANNINGSAPPARAAT

**AMENDMENTS
WYSIGINGS**

NO.	NAME NAAM	DATE DATUM
1	T. Human.	82-04-20.

ORG. REVISED.
TEK. HERSIEN.
D.O. REF. T1/82/28
TK-VERW.

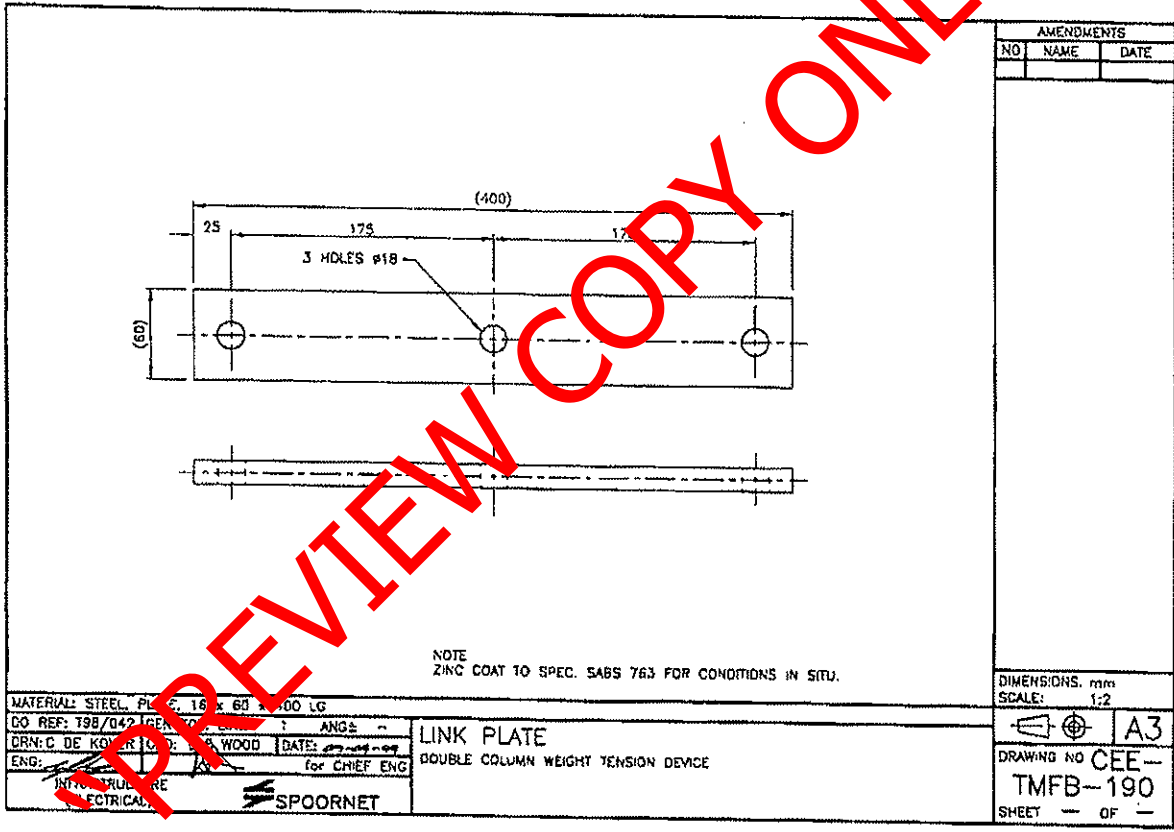
CEE-TV-157 SHT. 1
VEL
CEE-TV-178

ASSY. ORG. / SAMEST-TEK.

DRAWING NO
TEKENING CEE-

TMHF-99.

A3



NOTE
ZINC COAT TO SPEC. SABS 763 FOR CONDITIONS IN SITU.

MATERIAL: STEEL PLATE 18 x 60 x 400 LG		LINK PLATE	
DO REF: T98/042 IREN	ANGS	DOUBLE COLUMN WEIGHT TENSION DEVICE	
DRN: C. DE KOCK	DATE: 2008-08-08		
ENG: J. WOOD	for CHIEF ENG		
SPOORNET		DRAWING NO CEE- TMFB-190	
		SHEET - OF -	

AMENDMENTS		
NO	NAME	DATE

DIMENSIONS: mm	A3
SCALE: 1:2	

Δ 2

Δ 3

Δ

Δ 4

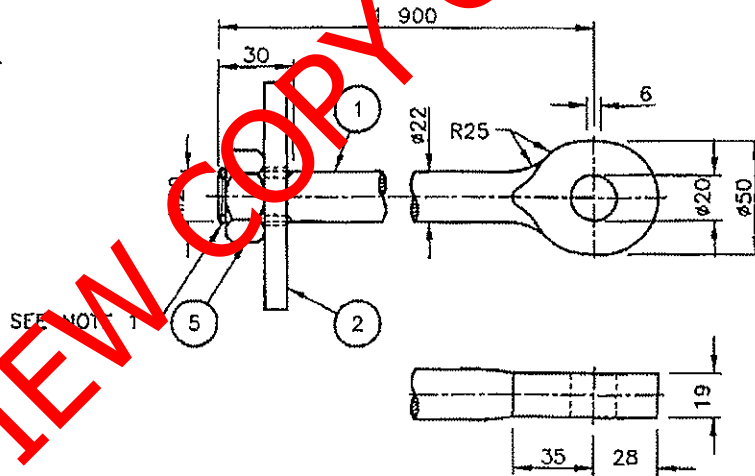
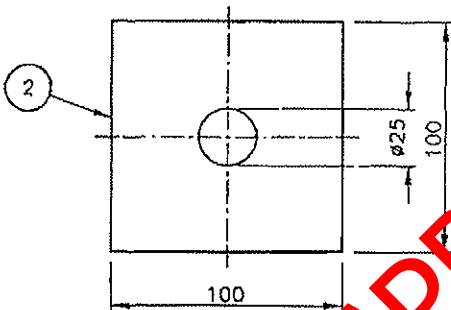
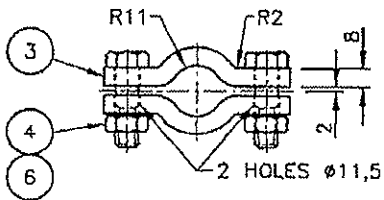
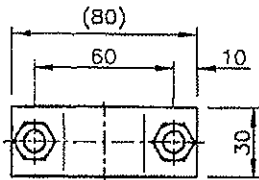
Δ 4

Δ

Δ 3

Δ 2

ITEM	DESCRIPTION	QTY	STORES ITEM NO	DRG NO CEE-	AMENDMENTS		
					NO	NAME	DATE
1	ROD M22 x 1 900 LONG	1					
2	SQUARE WASHER, 100 x 100 x 10 THICK	1					
3	CLIP 30 x 8 THICK x 90 (STRETCHED LENGTH)	2					
4	GALVANISED BOLT & NUT M10 x 35 LONG	2					
5	GALVANISED NUT M20	1					
6	GALVANISED FLAT WASHER M10	2					



NOTES
 1. ROD END TO BE PEENED OVER AFTER ASSEMBLY.
 2. ZINC COAT TO SPEC. SABS 763 FOR CONDITIONS IN SITU.

DO REF: T98/042	GEN TOL: LIN± 1	ANG± -
DRN: C DE KOKER	CKD: L E WOOD	DATE: 09-09-99
ENG:	for CHIEF ENG	
INFRASTRUCTURE (ELECTRICAL)	SPOORNET	

EYE ROD FOR BALANCE WEIGHTS
 DOUBLE COLUMN WEIGHT TENSION DEVICE

DIMENSIONS: mm	A3
SCALE: 1:2	
DRAWING NUMBER	BBB0305
VERSION 1	

ITEM	DESCRIPTION	QTY	STORES	ITEM NO.	DRW. NO.	AMENDMENTS		
						NO.	NAME	DATE
1	COLLAR BAND 40 x 8 x 1190 ???? (1275) LG	1						
2	DOLLAR BAND 40 x 8 x 655 LG	1						
3	EYE ROD #16 x 180 (STRETCHED LENGTH)	1						
4	GALVANISED BOLT & NUT M16 x 65 LG	2	1/2	286				
5	GALVANISED FLAT WASHER M16	2	1/3	280				

NOTE
ZINC COAT TO SPEC. SABS 763 FOR CONDITIONS IN SITU.

DO REF: 198/042 GEN	ANG: -	WEIGHT COLLAR
DRN. G DE KOKER CKL	DATE: 20-09-99	FOR CONCRETE WEIGHTS Ø350mm
ENC: [Signature]	for CHIEF ENG	DOUBLE COLUMN WEIGHT TENSION DEVICE
SPOORNET		DIMENSIONS: mm
		SCALE: 1:5
		A3
		DRAWING NO CEE-
		TMFB-191
		SHEET - OF -

PREVIEW COPY ONLY

Δ 2

Δ 3

Δ

Δ 4

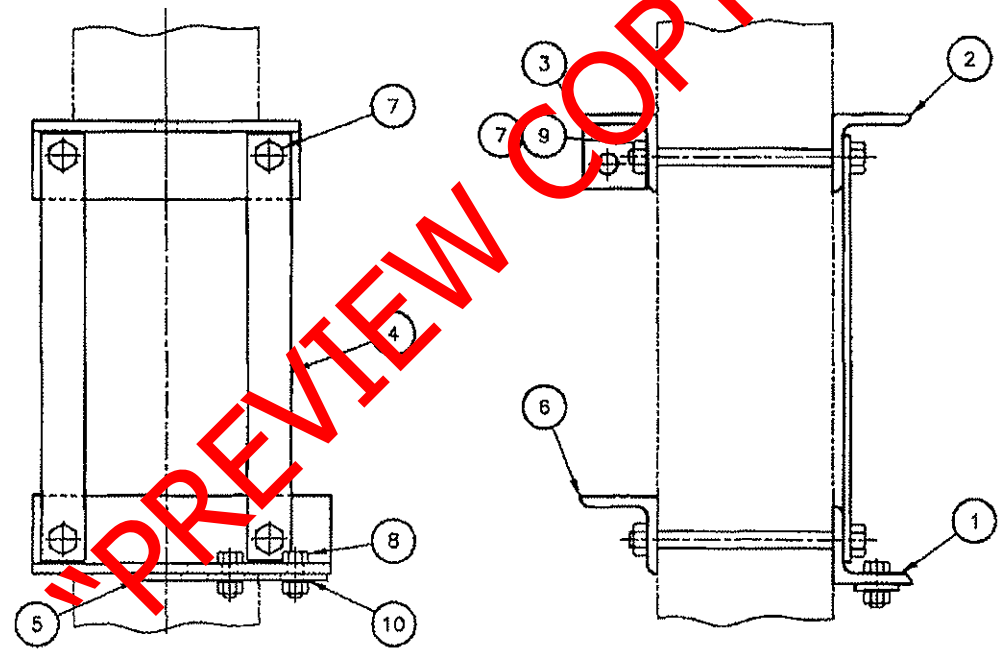
Δ 4

Δ

Δ 3

Δ 2

ITEM	DESCRIPTION	QTY	STORES ITEM NO	DRG NO	VERSION
1	ANGLE, BRACKET	1		BB0442 ITEM 1 ✓	NO NAME DATE
2	ANGLE, BRACKET	1		BB0442 ITEM 2 ✓	2 <i>[Signature]</i> <i>[Date]</i>
3	STAY WIRE ATTACHMENT	1		BBB1135	DRG NO'S BBB1135 AND BBB1136 OF ITEMS 3 & 6 WAS CEE-TMFB-58 & 52. DO REF: CDO/639
4	FISH PLATE	2		CEE-TMFB-177 ITEM 1	
5	ADJUSTING PLATE	1		CEE-TMFB-177 ITEM 2	
6	CLAMPING BRACKET	1		BBB1136	
7	BOLT AND NUT, STEEL, HEX, HD GALV, M20 x 255 LG	4			
8	BOLT AND NUT, STEEL, HEX, HD GALV, M16 x 40 LG	2			
9	WASHER, STEEL, ROUND, GALV, M20	4			
10	WASHER, STEEL, ROUND, GALV, M16	2			



PREVIEW COPY ONLY

DIMENSIONS: -
SCALE: NTS

A3

DRAWING NO
BBB0444
VERSION 2

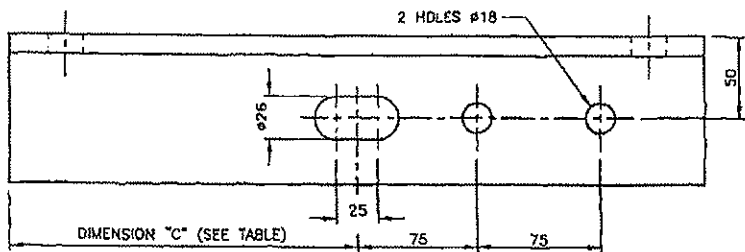
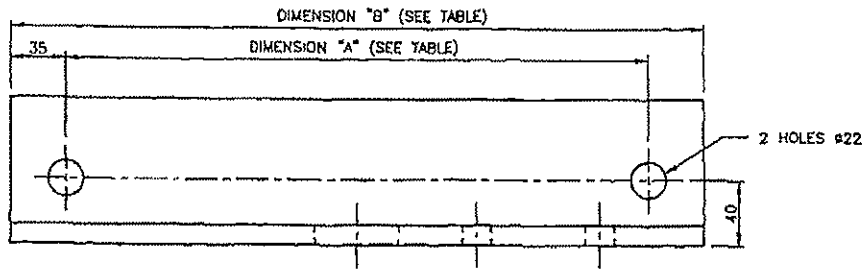
DO REF: CDO/275 GEN TOL: LIN± - ANG± -
 DRN: C L BUCKLE CKD: J v DYK DATE: 99-12-10
 ENG: W F MANS H A SLJER for CHIEF ENG

CENTRAL DRAWING OFFICE
 INFRASTRUCTURE (ELECTRICAL)

**BRACKET ASSEMBLY, MOUNTING OF
 WEIGHT TENSIONING DEVICE**
 CONCRETE MAST

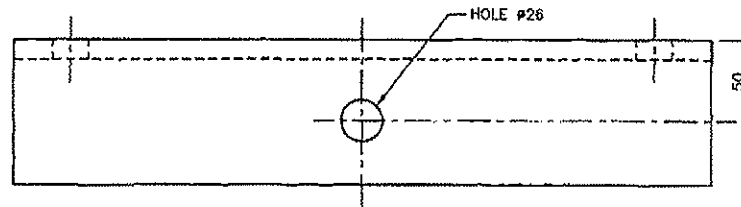
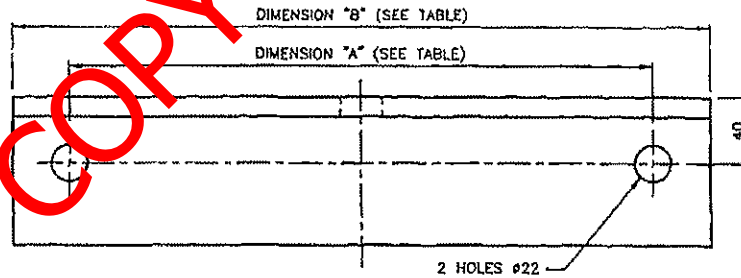
ITEM	DESCRIPTION	QTY	STORES ITEM NO	DRG NO	VERSION		
1	STEEL, ANGLE, 90 x 90 x 12 THK	1			NO	NAME	DATE
2	STEEL, ANGLE, 90 x 90 x 12 THK	1			2		

DIMENSIONS ALTERED AND TABLE ADDED.
DO REF: CDO/839



ITEM 1

TABLE			
APPLICATION	DIMENSION "A"	DIMENSION "B"	DIMENSION "C"
CANTILEVER STRUCTURE	280	350	175
DOUBLE BOOM STRUCTURE	320	390	195



ITEM 2

FINISH
ITEM 1 & 2: ZINC COAT TO SPEC. SABS 763 FOR CONDITIONS IN SITU.

"PREVIEW COPY ONLY"

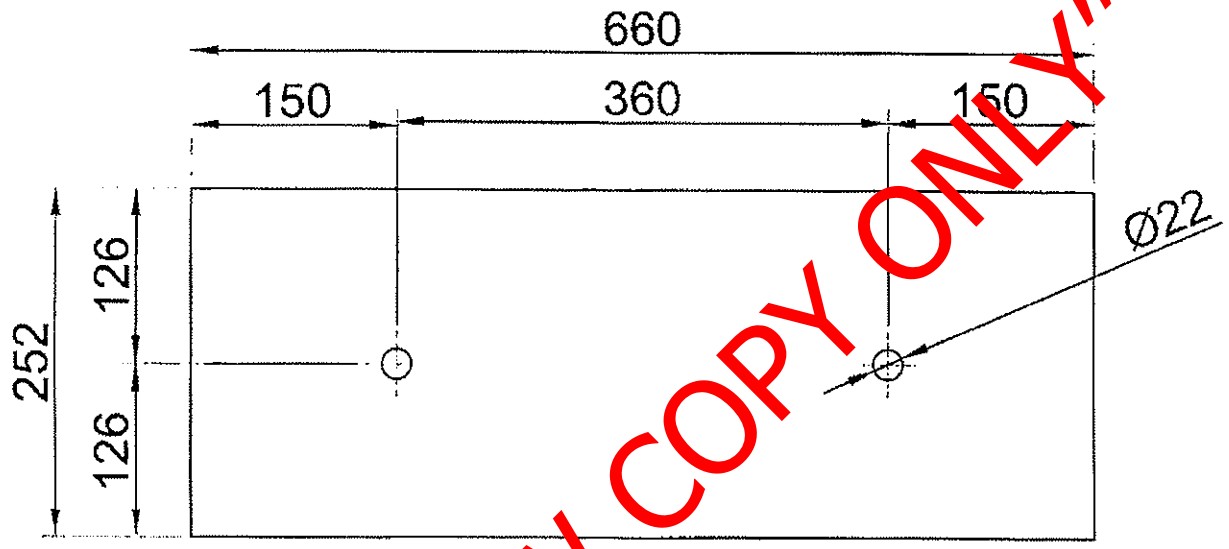
DD REF: CDO/275	GEN TOL: LIN±	1	ANG±	-
DRN: C L BUCKLE	CKD: J v DYK	DATE: 99-12-18		
ENG: W F MANS	H A SLUER	for CHIEF ENG		
CENTRAL DRAWING OFFICE INFRASTRUCTURE (ELECTRICAL) SPOORNET				

COMPONENTS, MOUNTING OF WEIGHT
TENSIONING DEVICE FOR CONCRETE MAST
25KV AC

DIMENSIONS: mm
SCALE: NTS

A2


DRAWING NO
BBB0442
VERSION 2



MATERIAL
660mm x 252mm x 12mm THICK
FLAT STEEL

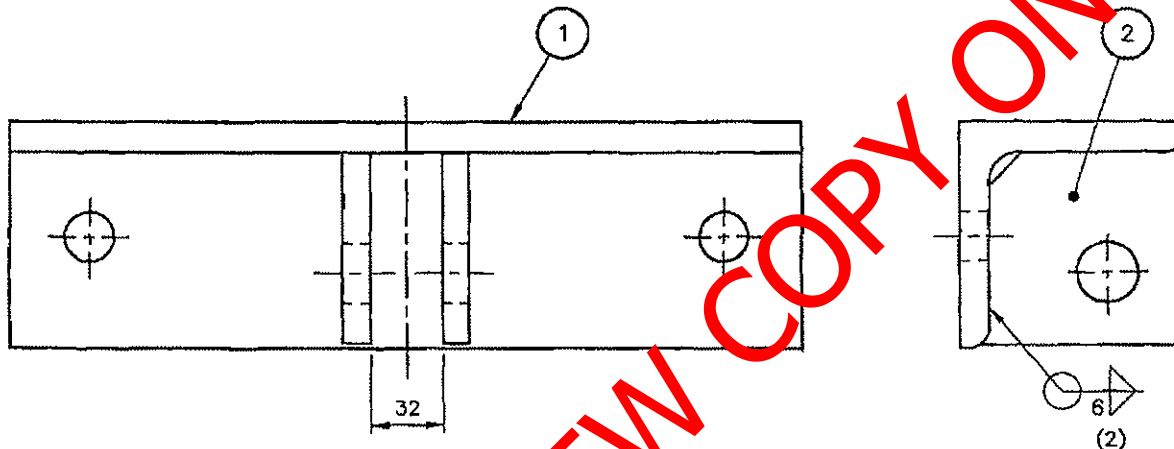
"PREVIEW COPY ONLY"

NO	REVISIONS	DATE	CHECKED	APPROVED
REVISIONS				

	
PROJECT TITLE HOTAZEL MANGANESE YARD REMODELLING	DRAWING TITLE BOTTOM PLATE WEIGHT TENSIONING DEVICE

DATE 30/11/2011	SCALE 1:5	PAPER SIZE A4
DRAWN BY <i>EF Low</i>	APPROVAL DATE _____ SIGNATURE _____	
DRAWING No. 1423337 ELEC 001		REVISION 0

ITEM	DESCRIPTION	QTY	STORES ITEM NO	ORG NO	VERSION		
1	ANGLE	1		BBB1136	NO	NAME	DATE
2	GUSSET PLATE	2		EE-TMHF-16			



FINISH
ZINC COAT TO SPEC. SABS 763 FOR CONDITIONS IN SITU.

"PREVIEW COPY ONLY"

DIMENSIONS: mm
SCALE: NTS

A3

DRAWING NO
BBB1135
VERSION 1

DO REF: CDO/639 GEN TOL: LIN± 1 ANG± -

DRN: C L BUCKLE CKD: J J van DYK DATE: 30/05/2000

ENG: for CHIEF ENG

CENTRAL DRAWING OFFICE
INFRASTRUCTURE (ELECTRICAL) SPOORNET

**STAY WIRE ATTACHMENT
WEIGHT TENSIONING DEVICE
CONCRETE MAST**

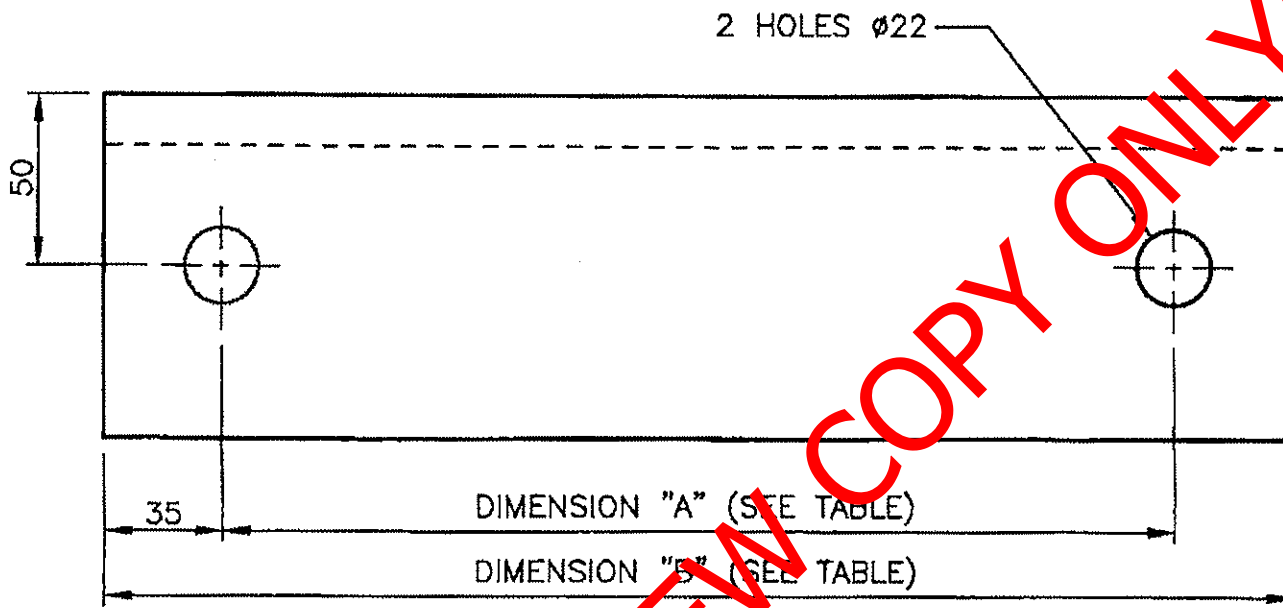


TABLE		
APPLICATION	DIMENSION "A"	DIMENSION "B"
CANTILEVER STRUCTURE	280	350
DOUBLE BOOM STRUCTURE	320	390

VERSION		
NO	NAME	DATE

DIMENSIONS: mm
SCALE: 1:2



MATERIAL: STEEL, ANGLE, 100 x 100 x 15 x "B"

REF: CDO/639 GEN TOL: LIN± 1 ANG± -

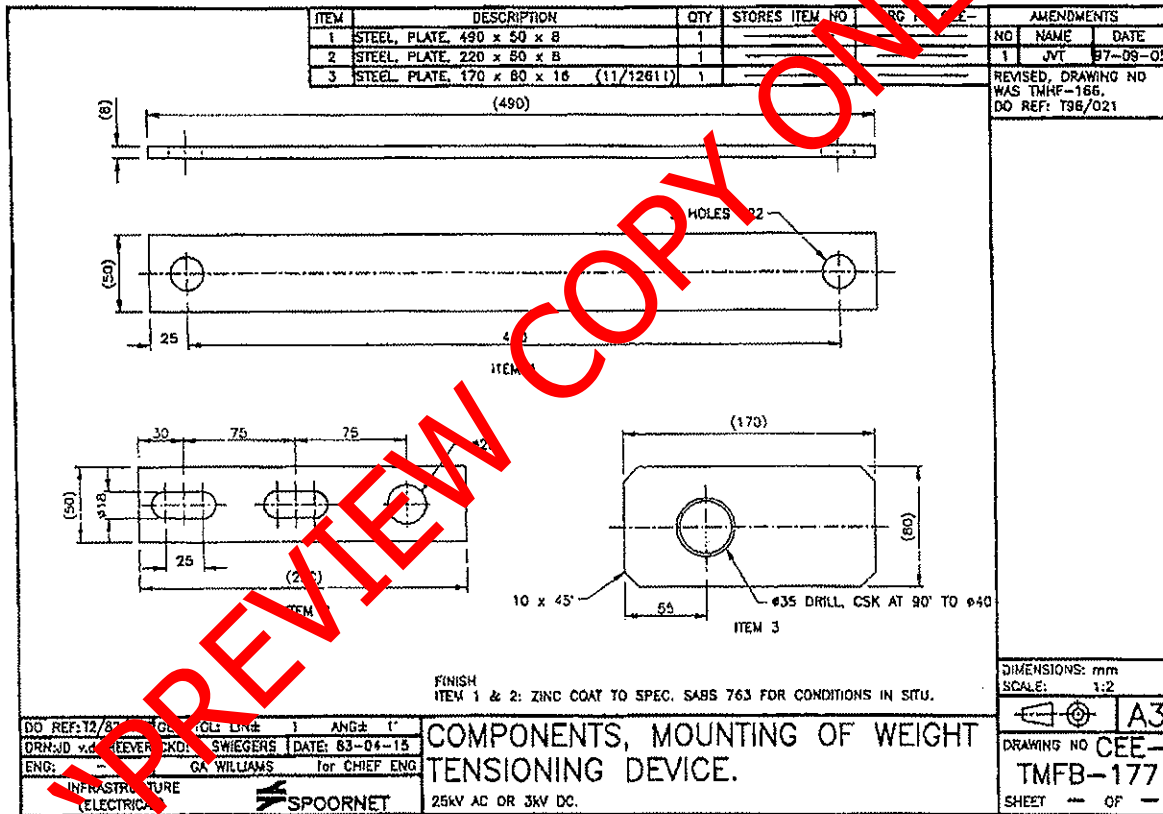
DRN: C L BUCKLE CKD: J van DYK DATE: 30/05/2000

VG: [Signature] for CHIEF ENG

CENTRAL DRAWING OFFICE
INFRASTRUCTURE (ELECTRICAL) SPOORNET

BRACKET, STAY WIRE ATTACHMENT
WEIGHT TENSIONING DEVICE
CONCRETE MAST

DRAWING NO
BBB1136
VERSION 1

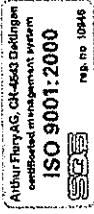


"PREVIEW COPY ONLY"

Δ 2
Δ 3
Δ 4
Δ 4
Δ 3
Δ 2



ARTHUR FLURY AG, CH-4543 Deitingen/Switzerland
Telefon +41 (0)32 613 33 66 Internet www.aflury.ch
Telefax +41 (0)32 613 33 68 E-Mail info@aflury.ch



To whom it may concern

CH-4543 Deitingen, T +31 300.000 / fg

We, Arthur Flury AG, Switzerland, hereby confirm to have newly appointed the company

Traction Enterprise
Electrical Infrastructure Specialists
16 Premier Avenue
Princess, Roodepoort 725
2030 Wilroпарк 731

as our agent for the country of South Africa. Traction Enterprise will handle all technical and commercial matters with regard to our full product range.

Yours sincerely,

ARTHUR FLURY AG

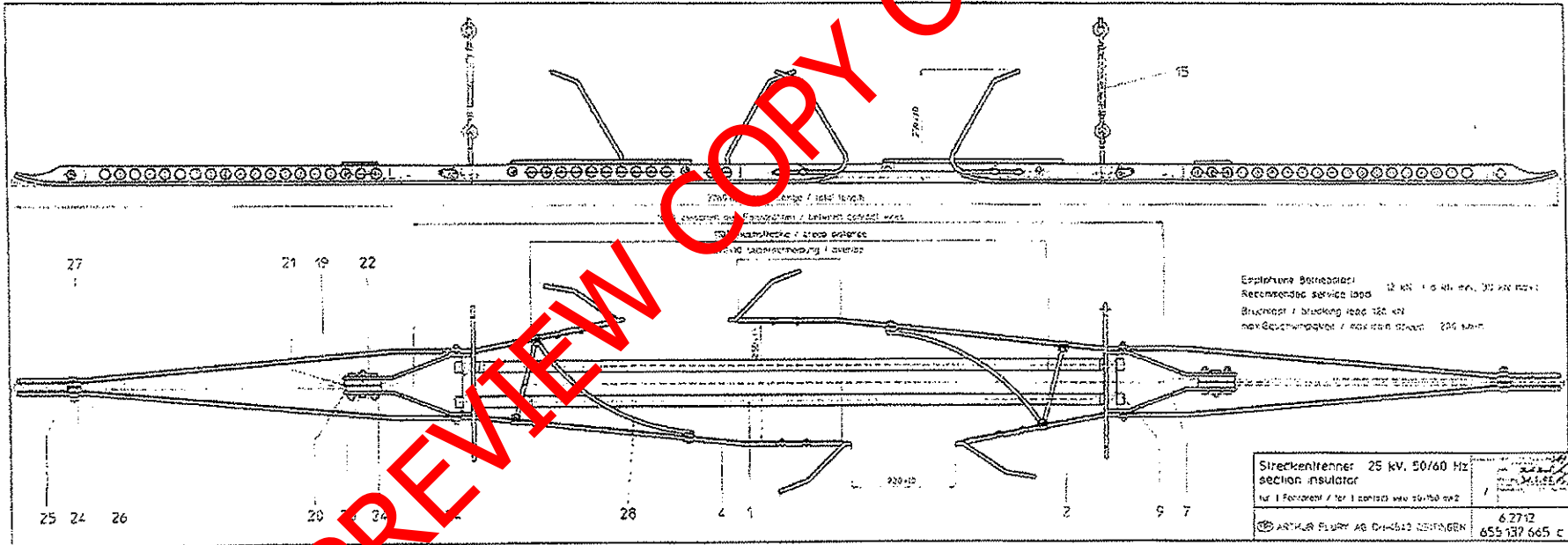

Adrian Flury
CEO / President


Kurt Kummer
Executive Sales Manager

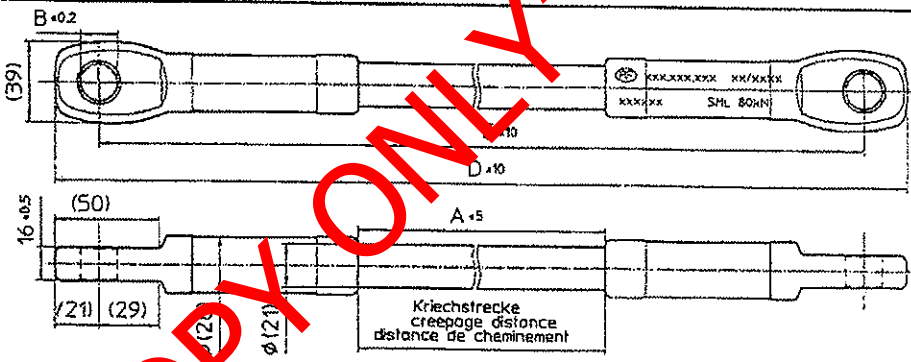
PREVIEW COPY ONLY

30 OFF

2



Artikel Nummer Number No d'article	A	B	C	D
657.026.000	300	17	550	592
657.027.000	600	17	850	892
657.022.000	700	17	950	992
657.020.715	800	17	1050	1092
657.014.716	1100	17	1350	1392
657.038.000	1400	17	1650	1692
657.012.725	1500	17	1750	1792
657.013.728	2000	17	2250	2292
657.008.724	2500	17	2750	2792
657.015.715	800	20,25	1050	1092
657.034.000	860	20,25	1110	1152
657.011.716	1100	20,25	1350	1392
657.010.725	1500	20,25	1750	1792
657.016.728	2000	20,25	2250	2292
657.007.724	2500	20,25	2750	2792
657.029.000	300	21,5	550	592
657.035.000	400	21,5	650	692
657.027.010	600	21,5	850	892
657.021.716	1100	21,5	1350	1392
657.032.000	1150	21,5	1450	1442
657.009.725	1500	21,5	1750	1792
657.017.728	2000	21,5	2250	2292
657.019.724	2500	21,5	2750	2792
657.025.728	2000	19	2250	2292
657.023.724	2500	19	2750	2792



Material : rostfrei 1.4435 . GFK - Stab mit PTFE Mantel
 Material : stainless steel 1.4435 . fiberglass rod PTFE coated

Kriechstrecke A creep distance A distance de cheminement A	300	600	700	800	1100	1500	2000	2500	mm
Nennstehwechselfspannung trocken dry power-frequency withstand voltage tension de contournement a sec	70	140	140	185	275	360	395	460	kV (RMS) 50 Hz
Nennstehwechselfspannung unter Regen wet power-frequency withstand voltage tension de contournement sous pluie	38	70	70	95	140	185	230	395	kV (RMS) 50 Hz
Überschlagsspannung trocken power-frequency flashover voltage dry tension de décharge sèche	≥ 115	235	270	310	425	570	775	960	kV/50Hz
Stehblitzstossspannung lightning impulse withstand voltage résistance a la tension de décharge fulgurante	75	145	145	250	325	450	550	950	kV 1,2/50 µs
Bruchlast auf Zug breaking load of tensile charge de rupture a la traction	≥ 80	80	80	80	80	80	80	80	kN
maximale Betriebslast auf Zug maximal working tensile load FOS = 3.3 traction maximal en service	24,3	24,3	24,3	24,3	24,3	24,3	24,3	24,3	kN
nominelle Dauerlast auf Zug nominal working tensile load traction nominelle	15	15	15	15	15	15	15	15	kN
Bruchlast auf Biegung charge de rupture a la flexion breaking load of bending	250	250	250	250	250	250	250	250	Nm
Gewicht, weight, poids	1,2	1,4	1,5	1,6	1,8	2,1	2,5	2,9	kg

Tragseilisolatoren mit Oese Catenary insulators Isolateurs pour caténaire	Maßstab Scale Echelle	Gez.	PW 27.197	<i>ll</i>
	1:2	Gepr.	<i>AKB</i>	<i>ll</i>
		Frühergepr.	7.11.11	<i>ll</i>
(®) ARTHUR FLURY AG CH-4543 DEITINGEN				6.3111-ext Appr. h