



Transnet SOC Limited
Transnet RME

REQUEST FOR QUOTATION

TFR RME RFQ Board
TFR RME RFQ Board
Transnet Freight Rail - RME
PROCUREMENT DEPARTMENT

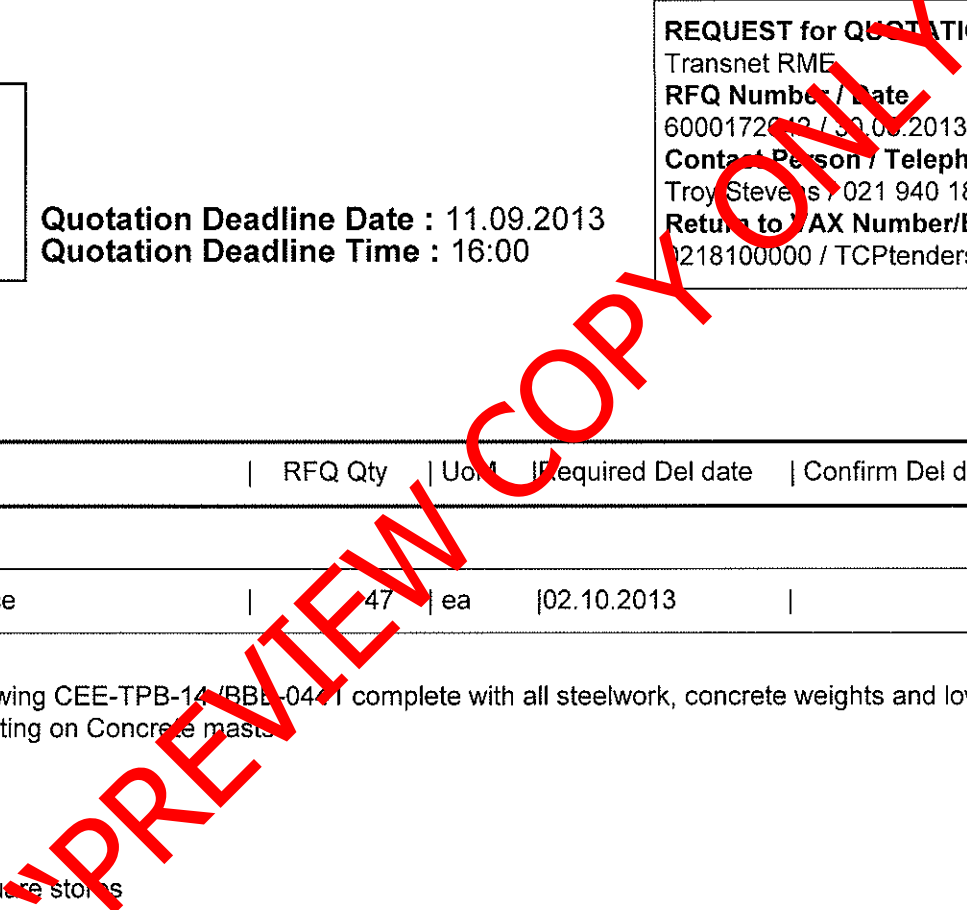
Registration Number: 1990/000900/06
Vat Number : 4720103177

Attention:

Telephone Number :
Fax Number :
Vendor Number :500000

Quotation Deadline Date : 11.09.2013
Quotation Deadline Time : 16:00

REQUEST for QUOTATION
Transnet RME
RFQ Number / Date
6000172012 / 30.09.2013
Contact Person / Telephone
Troy Stevens / 021 940 1892
Return to FAX Number/EMAIL
0218100000 / TCPtendersCapeTown@Transnet.net



Item	Material	Description	RFQ Qty	Unit	Required Del date	Confirm Del date	Unit Price Excl	Total Price Excl
00010		Weight Device	47	ea	02.10.2013			

Weight Device
Weight tension device to drawing CEE-TPB-14/BBB-04/1 complete with all steelwork, concrete weights and low friction sealed roller bearings.
25KV Electrification for mounting on Concrete mast
Jeff Niemand 0834556385

Project number 1414792

Delivery address Bellville Square stores

Requester and Delivery Address:

Richard Carswell - Transnet Freight Rail (RME)
Deliver to Bellville Square Bellville South
Western Cape

Tel: Richard Carswell 0219401813 & 0834556391
Cell: Jeff Niemand 0834556385



Transnet SOC Limited
 Transnet RME
 TFR RME RFQ Board
 TFR RME RFQ Board
 Transnet Freight Rail - RME
 PROCUREMENT DEPARTMENT
 0000

REQUEST FOR QUOTATION

Registration Number: 1990/000900/06
 Vat Number : 4720103177

Attention:
 Telephone Number :
 Fax Number :
 Vendor Number :500000

Quotation Deadline Date : 11.09.2013
Quotation Deadline Time : 16:00

REQUEST for QUOTATION
 Transnet RME
RFQ Number / Date
 60001726 / 30.08.2013
Contact Person / Telephone
 Troy Steven / 021 940 1892
Return to FAX Number/EMAIL
 0218100000 / TCPtendersCapeTown@Transnet.net

Item	Material	Description	RFQ Qty	UoM	Required Del date	Confirm Del date	Unit Price Excl	Total Price Excl
------	----------	-------------	---------	-----	-------------------	------------------	-----------------	------------------

Email: richard.carswell@transnet.net
 Fax: 021 9401938

If you are unable to quote for this enquiry, please submit a NO QUOTE, with a short reason, if possible, for not being able to quote.
 Otherwise we look forward to receive your quote by the date and time stated.

"PREVIEW COPY ONLY"



Transnet SOC Limited
Transnet RME
TFR RME RFQ Board
TFR RME RFQ Board
Transnet Freight Rail - RME
PROCUREMENT DEPARTMENT
0000

REQUEST FOR QUOTATION

Registration Number: 1990/000900/06
Vat Number : 4720103177

Attention:

Telephone Number :
Fax Number :
Vendor Number :500000

Quotation Deadline Date : 11.09.2013
Quotation Deadline Time : 16:00

REQUEST for QUOTATION
Transnet RME
RFQ Number / Date
60001726 / 30.08.2013
Contact Person / Telephone
Troy Stevens / 021 940 1892
Return to FAX Number/EMAIL
0218100000 / TCPtendersCapeTown@Transnet.net

Delivery Address

TFR RME Cape Town
De Gatt Complex, Behind Propne
Bellville South, Cape Tow
7530

This RFQ is subject to the following conditions:

1. Price/s : The price/s quoted in SA currency and is excluding of V.A.T
2. Delivery : The price/s quoted should include delivery cost to the delivery address stated on the RFQ
3. Returnables : A valid tax clearance certificate and BBBEE certificate from a SANAS accredited verification agency attached to quotation for all quotes above R30 000.
Please note that only the official Transnet RFQ will be accepted and all other correspondence to be attached to the original
4. Safety : To confirm to Transnet Capital Projects Health & Safety plan and specification; HAS-std-0001, copy available on request.
5. Confirmation: To confirm your participation in this tender process please sign and return this document as immediate effect prior to the quotation deadline.
6. Negotiations: The Employer may elect to negotiate the final terms of the contract/order with the preferred tenderer in accordance with Clauses F.2.17 and F.3.13 of the CIDB Standard Conditions of Tender. A copy of which is available upon request.

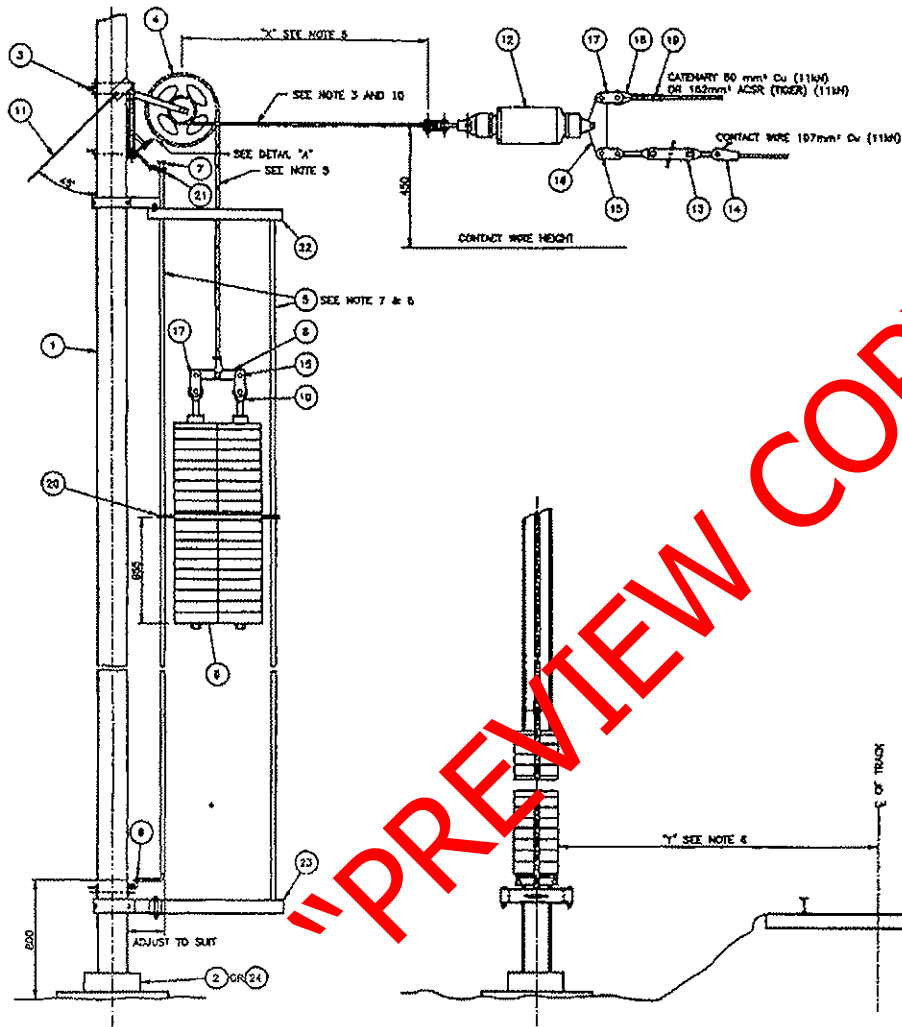
Signature

Date

PREVIEW COPY

2013/08/20

Manganese Ph1 WT Device CEE-TPB-14		
Drg No	Description	Qty
TMF523	Pulley WT with sealed bearings	100
BBB0445/6/7	Support Frame Top and Bottom complete	200
	Guide rod for weights Galv pipe 25mmdia x 3,5 wall x 6m L	200
TMHF99	Yoke Plate for weights	100
TMFB190	Link Plate for weights	100
BBB0305	Eye Rod for weights	100
TMFB191	Weight Collar	100
BBB0444	Bracket Assembly WT Mounting concrete mast	100
BBO442#1	Clamping Bracket WT Bottom L=350 Hole crs 280mm	100
BBO442#2	Clamping Bracket WT Top L=350 Hole crs 280mm	100
1423337	Bottom Plate WT Weights 660x252x12	100
BBB135	Staywire attachment	100
BBB136	Clamping Bracket Stay	100
TMFB177#1	Fish Plate	200
TMFB177#2	Adjusting plate	100
	Concrete weights x28 per set 25kg ea 350mm dia	100



ITEM	DESCRIPTION	QTY	STORES ITEM NO	DRG NO CEE	NO	NAME	DATE
1	MAST, UNIVERSAL COLUMN 216 x 208 x 71 kg/m	1					
2	FOUNDATION, CONCRETE TYPE	1					
3	BRACKET, MOUNTING OF WEIGHT TENSIONING DEVICE INTO LG. MAST	1					
4	PULLEY 311 MECHANICAL ADVANTAGE	1					
5	STEEL TUBE GALV. 452 O.D. x 3.8 WALL THICKNESS (SEE NOTE 7 & 8)	1					
6	MISCELL. FASTENING PARTS, GLUE, LUBE	2					
7	CUP (2) SABS 506 TABLE 20 SIZE 38	1					
8	LINK PLATE - BALANCE WEIGHT	1					
9	WEIGHT 25kg CONCRETE #330	30					
10	EYE ROD FOR BALANCE WEIGHTS	2					
11	STAY WIRE ARRANGEMENT	1					
12	INSULATOR SOLID CORE 25KV	1					
13	TURBULOCK 460mm TAKE-UP	1	54/11228				
14	DRUM CORE (167mm) CONTACT WIRE	1	54/1825				
15	PIPE, STRAIGHT, 1/2" O.D. CLEVIS	1	54/4876				
16	ROPE PLATE	11	54/4020				
17	ADAPTER PLATE (EYE ROD)	8	54/2191				
18	THURBLE	1	54/11022				
19	CLAMP, ELECTRICAL, STRAIN	1					
20	WEIGHT CARRIER, DOUBLE COLUMN WEIGHT TENSION DEVICE	1					
21	LOCKING PIN ASSEMBLY, WEIGHT TENSION ARRANGEMENT, GUIDE TUBE	1					
22	TOP SUPPORT FRAME FOR GUIDE ROD	1					
23	BOTTOM SUPPORT FRAME FOR GUIDE ROD	1					
24	FOUNDATION, CONCRETE	1					

BBB0444

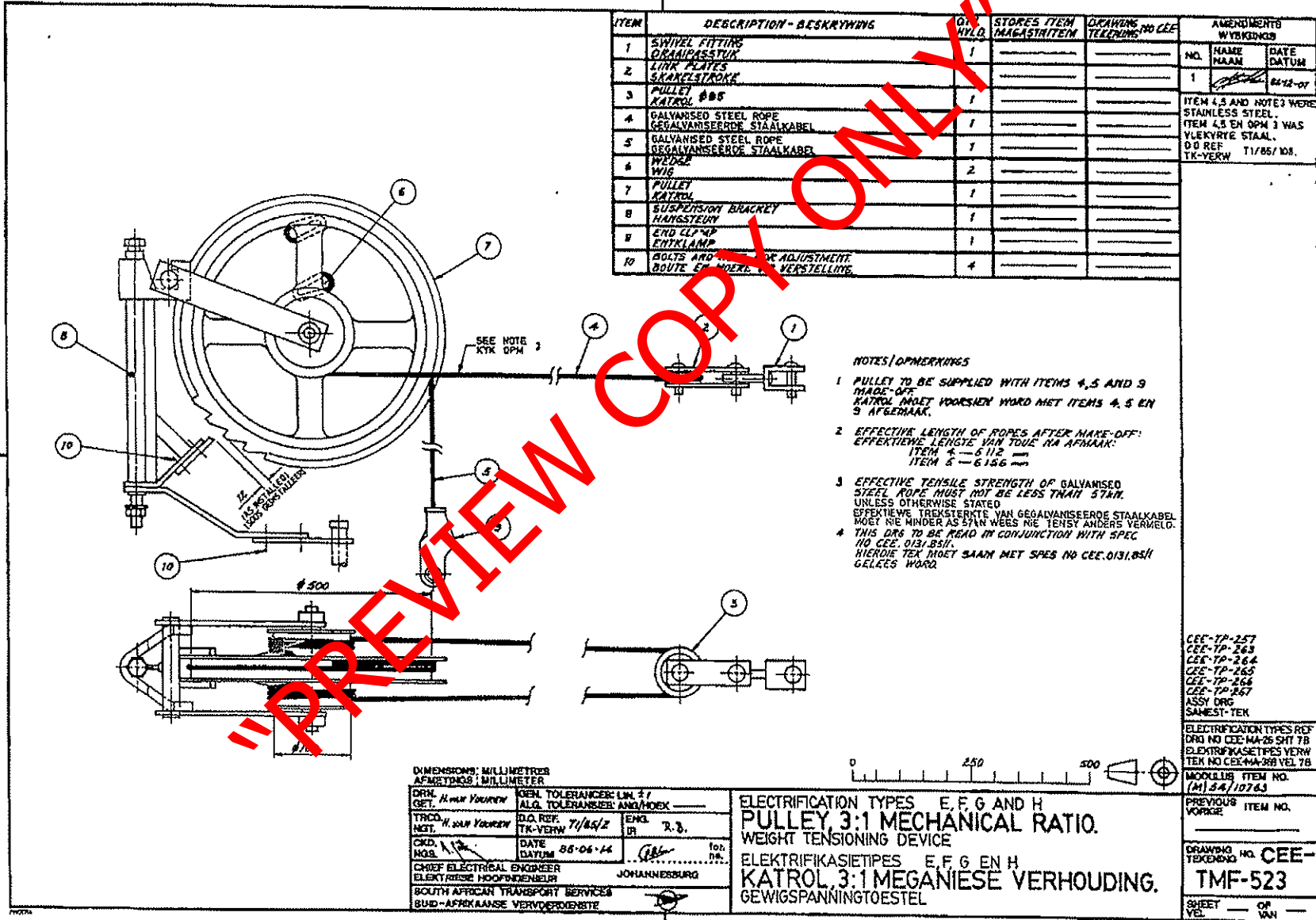
BBB0445/6/7

PREVIEW COPY ONLY

- NOTES
1. TO BE ADJUSTED AFTER ORIENTATION.
 2. TOTAL MASS OF WEIGHTS 750kg.
 3. GALVANISED STEEL ROPES SUPPLIED WITH WEIGHT TENSIONING DEVICE MUST UNDER NO CIRCUMSTANCES BE CUT TO SHORTER LENGTHS.
 4. FOR METHOD TO ADJUST WEIGHTS, SEE DRG HG CEE-TP-259.
 5. FOR ADJUSTMENT CHARTS, SEE DRG NO CEE-TP-262.
 6. DIMENSION 'Y' MUST NOT BE LESS THAN THE MINIMUM CLEARANCE REQUIRED FOR THE PARTICULAR CONDITIONS AS SET OUT ON ANNEXURE 1 OF THE 'PERMANENT WAY INSTRUCTIONS'.
 7. LENGTH TO BE DETERMINED ON SITE.
 8. USE STANDARD THREADED WATER PIPE AND MOUNT WITH ONE THREADED END ON TOP.
 9. THIS DRG TO BE READ IN CONJUNCTION WITH SPEC CEE-0131.85/1.
 10. STEEL ROPE TO HAVE MINIMUM TENSILE STRENGTH OF 37% UNLESS OTHERWISE STATED.

DIMENSIONS: mm
 SCALE: 1:10
 A1
 DRAWING NO CEE-TPB-14
 SHEET -- of --

DO NOT SCALE DIMENSIONS
 DRG C DE WOOD (CHK) & WOOD (DATE 28-1-77)
 ENG. (CHIEF ENG)
 INFRASTRUCTURE (ELECTRICAL)
 SPOORNET
 WEIGHT TENSIONING ARRANGEMENT
 DOUBLE COLUMN CONCRETE WEIGHTS WITH DOUBLE GUIDES
 25KV AC ELECTRIFICATION



ITEM	DESCRIPTION - BESKRYWING	QTY	STORES ITEM MAGASTRIEM	DRAWING NO CEE TELEKODING	AMENDMENTS WYSKODING
1	SWIVEL FITTING DRAAIPASSTUK	1			NO. NAME DATE
2	LINK PLATES SKAKELSTROKE				1 [Signature] 84/12-07
3	PULLEY KATROL Ø 85	1			ITEM 4,5 AND NOTE 3 WERE STAINLESS STEEL.
4	GALVANISED STEEL ROPE GEGALVANISEERDE STAALKABEL	1			ITEM 4,5 EN OPM 3 WAS VLEKRYTE STAAL.
5	GALVANISED STEEL ROPE GEGALVANISEERDE STAALKABEL	1			Ø Ø REF TK-VERW T1/85/108.
6	WEDGE WIG	2			
7	PULLEY KATROL	1			
8	SUSPENSION BRACKET HANGSTEURN	1			
9	END CLAMP EINDKLAMP	1			
10	BOLTS AND NUTS FOR ADJUSTMENT BOUITE EN MOERKE VOOR VERSTELLING	4			

NOTES / OPMERKINGS

1 PULLEY TO BE SUPPLIED WITH ITEMS 4, 5 AND 9 MADE-OFF. KATROL MOET VOORSIEN WORD MET ITEMS 4, 5 EN 9 AFGERMAK.

2 EFFECTIVE LENGTH OF ROPES AFTER MAKE-OFF: EFFEKTIEWE LENGTE VAN TOUW NA AFMAAK:
ITEM 4 — 6 112 mm
ITEM 5 — 6 156 mm

3 EFFECTIVE TENSILE STRENGTH OF GALVANISED STEEL ROPE MUST NOT BE LESS THAN 57 kN. UNLESS OTHERWISE STATED. EFFEKTIEWE TREKSTERKTE VAN GEGALVANISEERDE STAALKABEL MOET NIE MINDER AS 57 kN WEES NIE TENSY ANDERS VERMELD.

4 THIS Dwg TO BE READ IN CONJUNCTION WITH SPEC. NO CEE. 013/BS11. HIERDIE TEK MOET SAAM MET SPES NO CEE. 013/BS11 GELEES WORD.

CEE-TP-257
CEE-TP-263
CEE-TP-264
CEE-TP-265
CEE-TP-266
CEE-TP-267
ASSY Dwg
SAMEST-TEK

ELECTRIFICATION TYPES REF Dwg NO CEE-NA-26 SHT 7B
ELEKTRIFIKASIE Tipes VERW TEK NO CEE-NA-26 SHT 7B

MODULE ITEM NO. (M) 34/10763

PREVIOUS ITEM NO. VORIGE

DRAWING NO. CEE-
TEKODING TMF-523

SHEET OF VAN —

DIMENSIONS: MILLIMETRES
AFMETINGS: MILLIMETER

DRW. SET. H. van Youwen	GEN. TOLERANCE: UN 4 / I.A.O. TOLERANSIE: ANS/MOEK
TRCD. NGT. H. van Youwen	D.O. REF. TK-VERW T1/85/12 ENH. R. B.
CKD. MGB.	DATE 88-06-14

CHIEF ELECTRICAL ENGINEER
ELEKTRISIE HOOFDINGENIER

JOHANNESBURG

SOUTH AFRICAN TRANSPORT SERVICES
SUID-AFRIKAANSE VERVOERDIENSTE

ELECTRIFICATION TYPES E, F, G AND H
PULLEY 3:1 MECHANICAL RATIO.
WEIGHT TENSIONING DEVICE

ELEKTRIFIKASIE Tipes E, F, G EN H
KATROL 3:1 MEGANIËSE VERHOUDING.
GEWIGSPANNINGTOESTEL

TMF-523

2

3

4

6

7

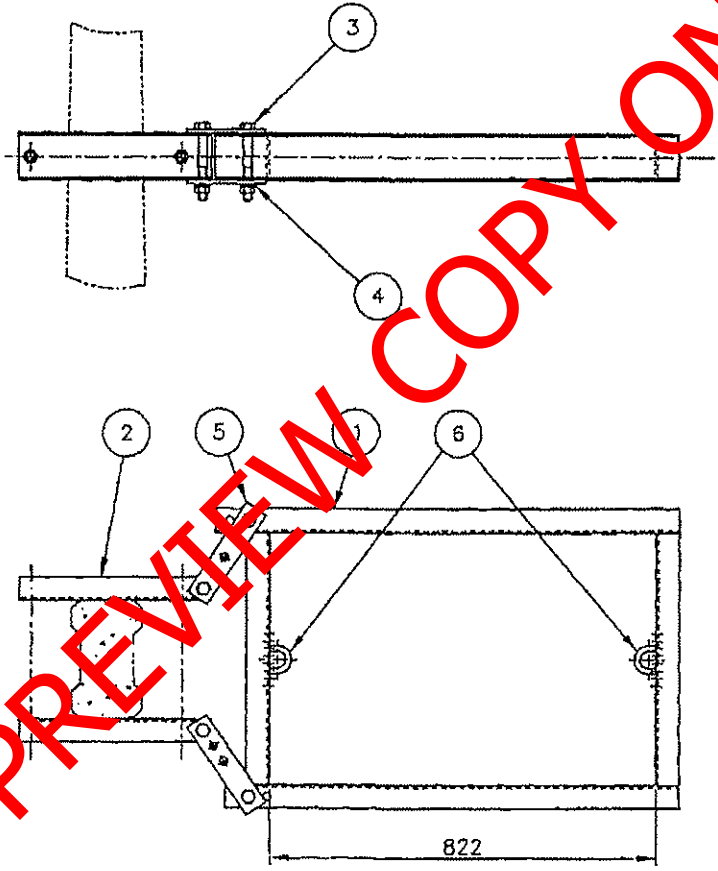
8

9

A2

ITEM	DESCRIPTION	QTY	STORES ITEM NO.	DRG NO.
1	FRAME	1		BBB0446
2	MAST ATTACHMENT BRACKET	2		BBB0447 ITEM 1
3	BOLT & NUT, STEEL, HEX, GALV. M16 x 155 LG	4		
4	WASHER, LOCK, STEEL, ROUND, GALV. M16	4		
5	LINK STRAP	4		BBB0447 ITEM 2
6	U-BOLT, STEEL, M12	2		CEE-TX-97

VERSION		
NO	NAME	DATE



"PREVIEW COPY ONLY"

DIMENSIONS: mm
SCALE: 1:10

A3

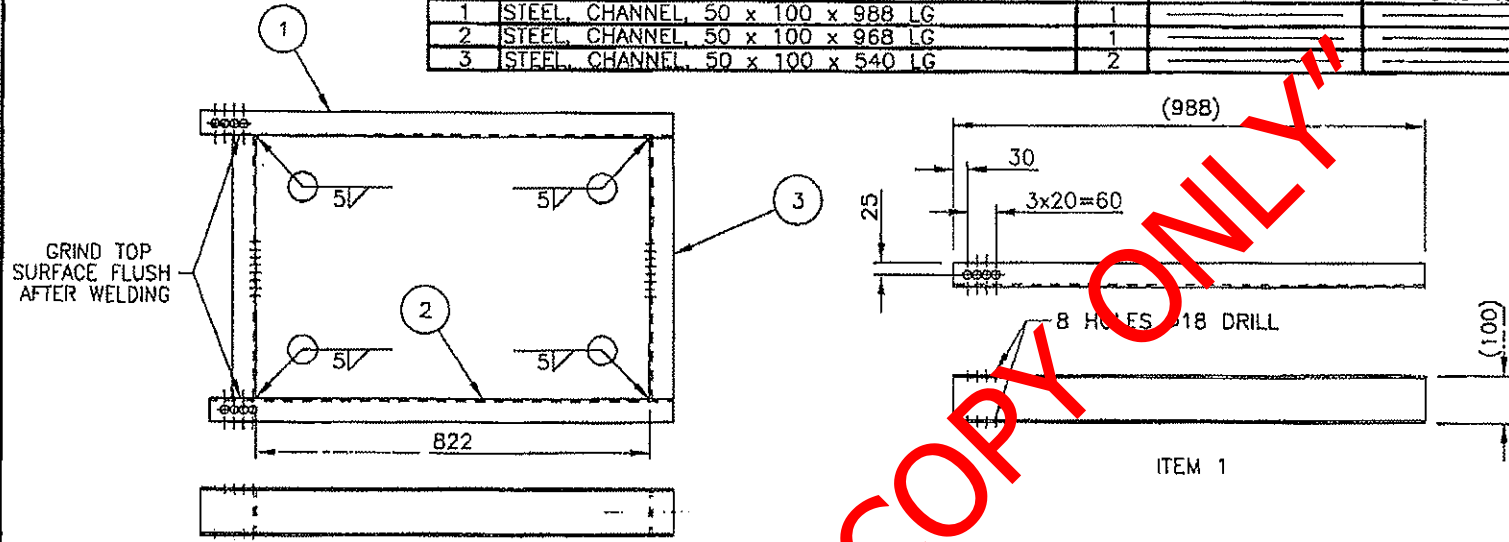
DO REF: CDO/275 GEN TOL: LIN± 2 ANG± —
 DRN: C L BUCKLE CKD: V v DYK DATE: 99-12-10
 ENG: for CHIEF ENG

TOP & BOTTOM SUPPORT FRAME FOR GUIDE RODS
 DOUBLE COLUMN WEIGHTS
 CONCRETE MAST, WEIGHT TENSIONING DEVICE

CENTRAL DRAWING OFFICE
 INFRASTRUCTURE SPOORNET

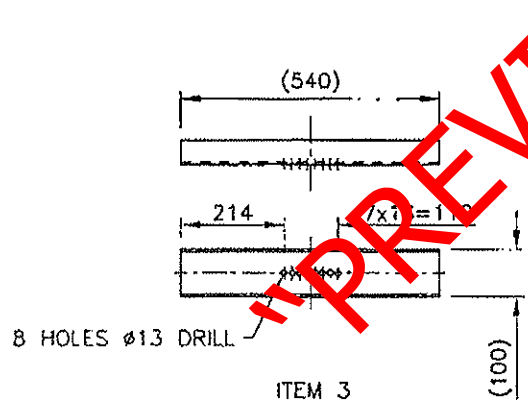
DRAWING NO
BBB0445
 VERSION 1

ITEM	DESCRIPTION	QTY	STORES ITEM NO	DRG NO	VERSION		
					NO	NAME	DATE
1	STEEL CHANNEL, 50 x 100 x 988 LG	1					
2	STEEL CHANNEL, 50 x 100 x 968 LG	1					
3	STEEL CHANNEL, 50 x 100 x 540 LG	2					

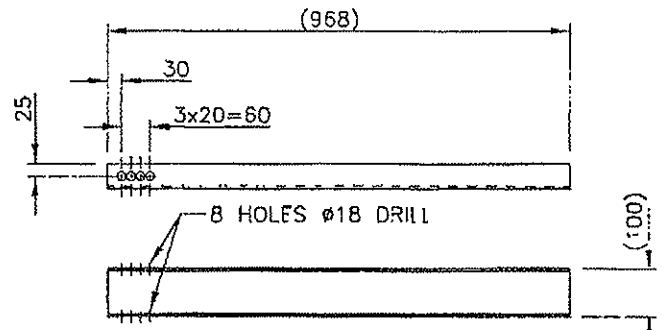


ASSEMBLY

FINISH
ZINC COAT TO SABS 763 FOR CONDITIONS IN SITE AFTER ASSEMBLY



ITEM 3



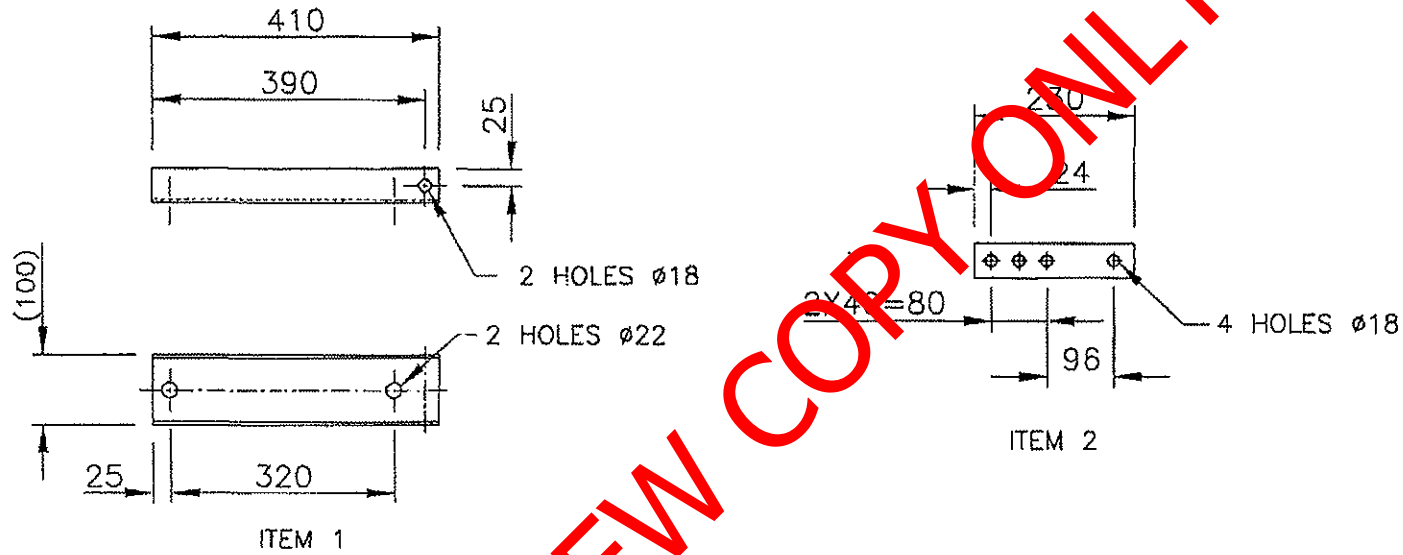
ITEM 2

DO REF: CDO/275	GEN TOL: LIN ± 1	ANG ±
DRN: C L BUCKLE	CKD: M v DYK	DATE: 99-12-10
ENG:		for CHIEF ENG
CENTRAL DRAWING OFFICE INFRASTRUCTURE		SPOORNET

FRAME
TOP & BOTTOM SUPPORT FRAME FOR GUIDE RODS
CONCRETE MAST, WEIGHT TENSIONING DEVICE

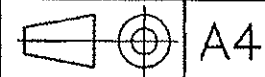
DIMENSIONS: mm SCALE: 1:10	
	A3
DRAWING NO BBB0446	
VERSION 1	

ITEM	DESCRIPTION	QTY	STORES ITEM NO	DRG NO	VERSION		
1	STEEL, CHANNEL, 50 x 100 x 410 LG	1	_____	_____	NO	NAME	DATE
2	STEEL, FLAT, 50 x 8 THK	1	_____	_____			



FINISH
ZINC COAT TO SABS 763 FOR CONDITIONS IN SITU.

DIMENSIONS: mm
SCALE: 1:10



DRAWING NO
BBB0447
VERSION 1

DO REF: CDO/275	GEN TOL: LIN ± 1	ANG ± -
DRN: C L BUCKLE	CKD: N v DYK	DATE: 99-12-10
ENG: <i>[Signature]</i>	for CHIEF ENG	

CENTRAL DRAWING OFFICE
INFRASTRUCTURE



MAST ATTACHMENT BRACKET
TOP & BOTTOM SUPPORT FRAME FOR GUIDE RODS
CONCRETE MAST, WEIGHT TENSIONING DEVICE

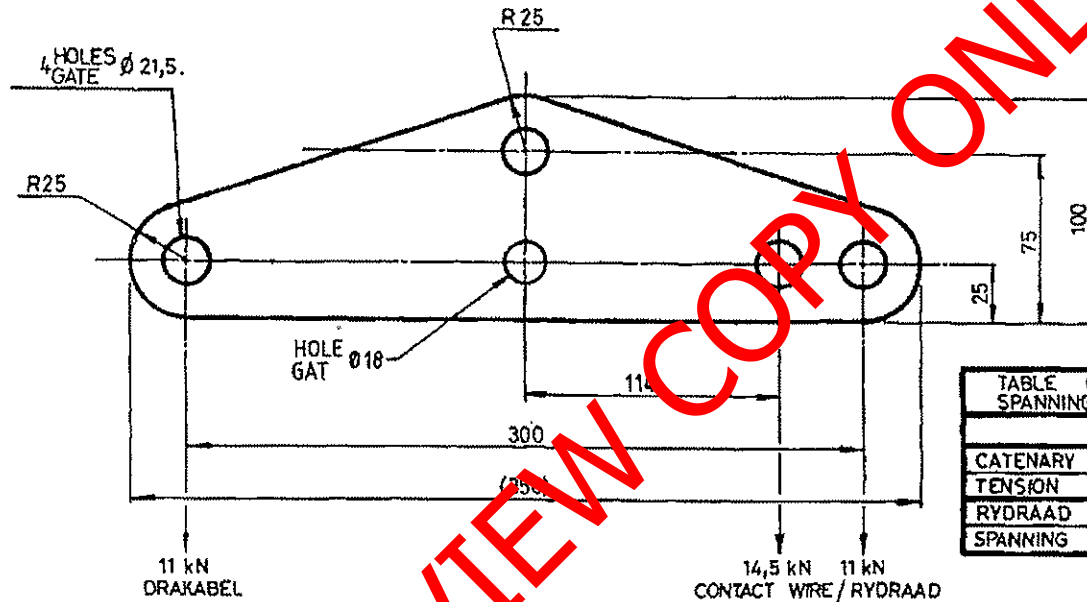


TABLE OF TENSIONS SPANNINGSTABEL		
	AC / WS	DC / GS
CATENARY	80mm	100mm
TENSION	11 kN	11 kN
RYDRAAD	107mm	161mm
SPANNING	11 kN	14,5 kN

AMENDMENTS WYSIGINGS		
NO.	NAME NAAM	DATE DATUM
1	T. Human.	82-04-20.

ORG. REVISED.
TEK. HERSIEN.
D.O. REF. T1/82/20
TK-VERW.

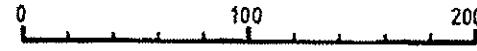
DIMENSIONS : MILLIMETRES.
AFMETINGS : MILLIMETER.

MATERIAL - MATERIAAL
STEEL, FLAT 100 x 16 x 350 L.
STAAL, PLAT
SPEC. CME. 9 SYM. 7.
SPES. SIM.
STORES ITEM NO. (M) 11/12635.

NOTE / OPM.

ZINC COAT TO SPEC.
SINKBEDEK VOLG. SPES. S.A.B.S. 763.

SOUTH AFRICAN TRANSPORT SERVICES
SUID-AFRIKAANSE VERVOERDIENSTE



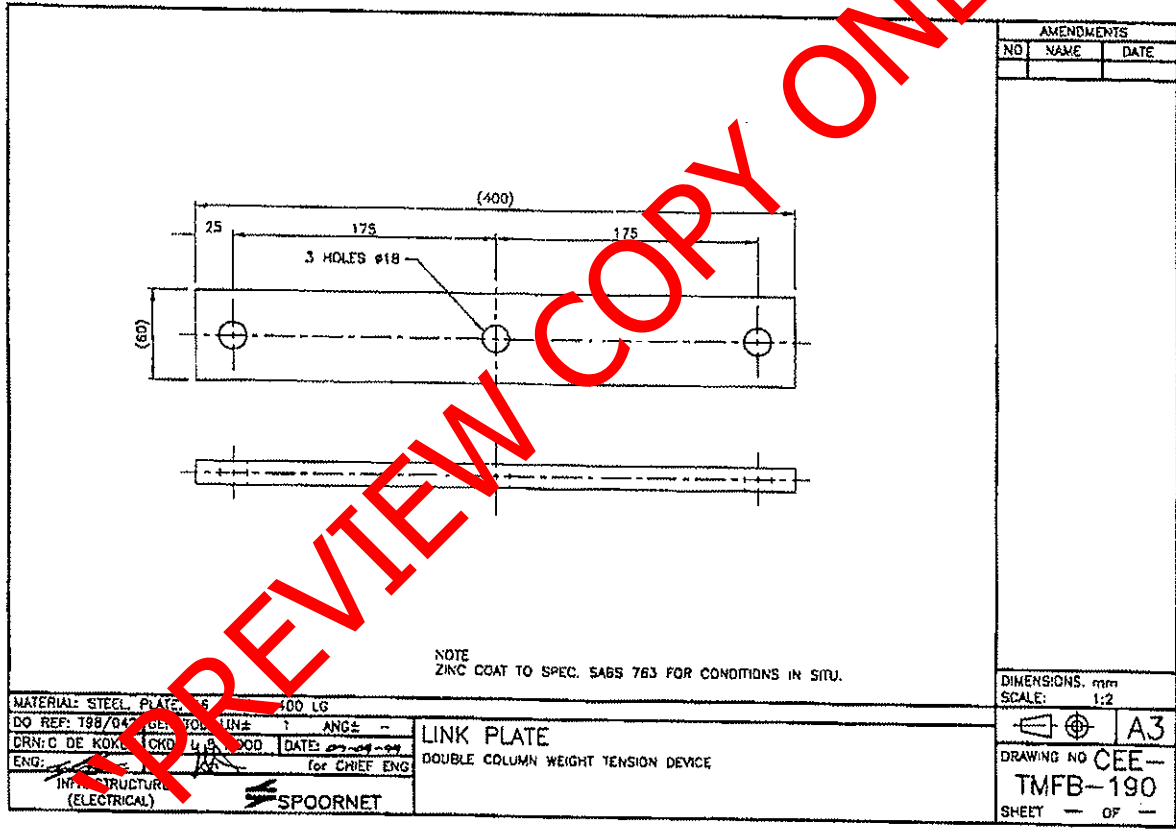
GEE-TV-157 SHT. 1
VEL
CEE-TV-178

DRN GET. B.J.vdWesthuizen	GEN. TOLERANCES : LIN. ± 0,5. ALG. TOLERANSIES : ANG/HOEK —
TRCD NGT. B.J.vdWesthuizen	D.O. REF. T2/80/24 TK-VERW. IR.
CKD NGS. J.SWIEGERS.	DATE DATUM 31.03.08
CHIEF ELECTRICAL ENGINEER ELEKTRIESE HOOFINGENIEUR	JOHANNESBURG

YOKE, PLATE
STANDARD WEIGHT TENSIONING DEVICE
JUK, PLAAT
STANDAARD GEWIGSPANNINGSAPPARAAT

ASSY. ORG. / SAMEST-TEK.

DRAWING NO **CEE-**
TEKENING **TMHF-99.**



NOTE
ZINC COAT TO SPEC. 5465 763 FOR CONDITIONS IN SITU.

MATERIAL: STEEL PLATE 6 400 LG
 DO REF: 198/047
 DRN: C DE KOKK
 ENG: *[Signature]*
 INF. STRUCTURE (ELECTRICAL)

LINK PLATE
 DOUBLE COLUMN WEIGHT TENSION DEVICE



AMENDMENTS		
NO	NAME	DATE

DIMENSIONS: mm
 SCALE: 1:2

A3

DRAWING NO CEE-
 TMFB-190

SHEET - OF -

Δ 2

Δ 3

Δ

Δ 4

Δ 4

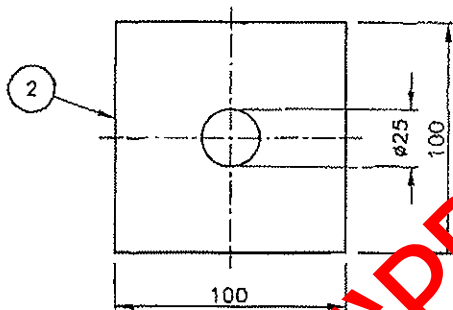
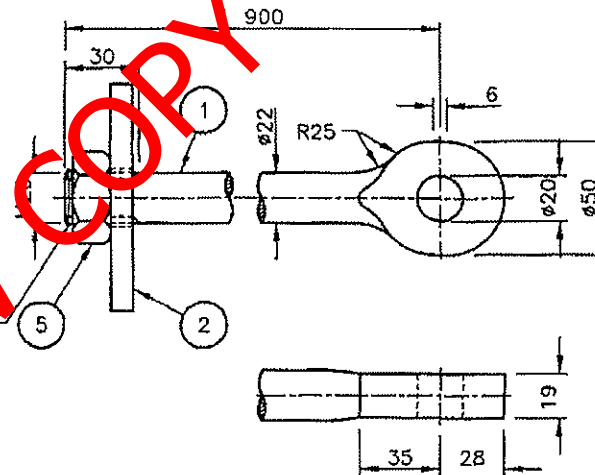
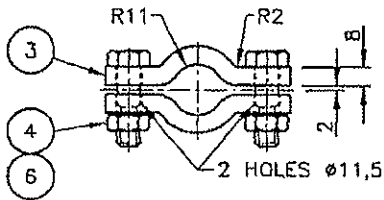
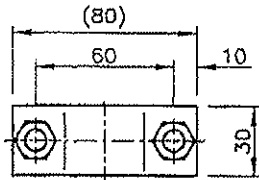
Δ

Δ 3

Δ 2

12 0

ITEM	DESCRIPTION	QTY	STORES ITEM NO	DRG NO CEE--	AMENDMENTS		
					NO	NAME	DATE
1	ROD M22 x 1 900 LONG	1					
2	SQUARE WASHER, 100 x 100 x 10 THICK	1					
3	CLIP 30 x 8 THICK x 90 (STRETCHED LENGTH)	2					
4	GALVANISED BOLT & NUT M10 x 35 LONG	2					
5	GALVANISED NUT M20	1					
6	GALVANISED FLAT WASHER M10	2					



NOTES

1. ROD END TO BE PEENED OVER AFTER ASSEMBLY.
2. ZINC COAT TO SPEC. SABS 763 FOR CONDITIONS IN SITU.

DIMENSIONS: mm
SCALE: 1:2



DRAWING NUMBER

BBB0305

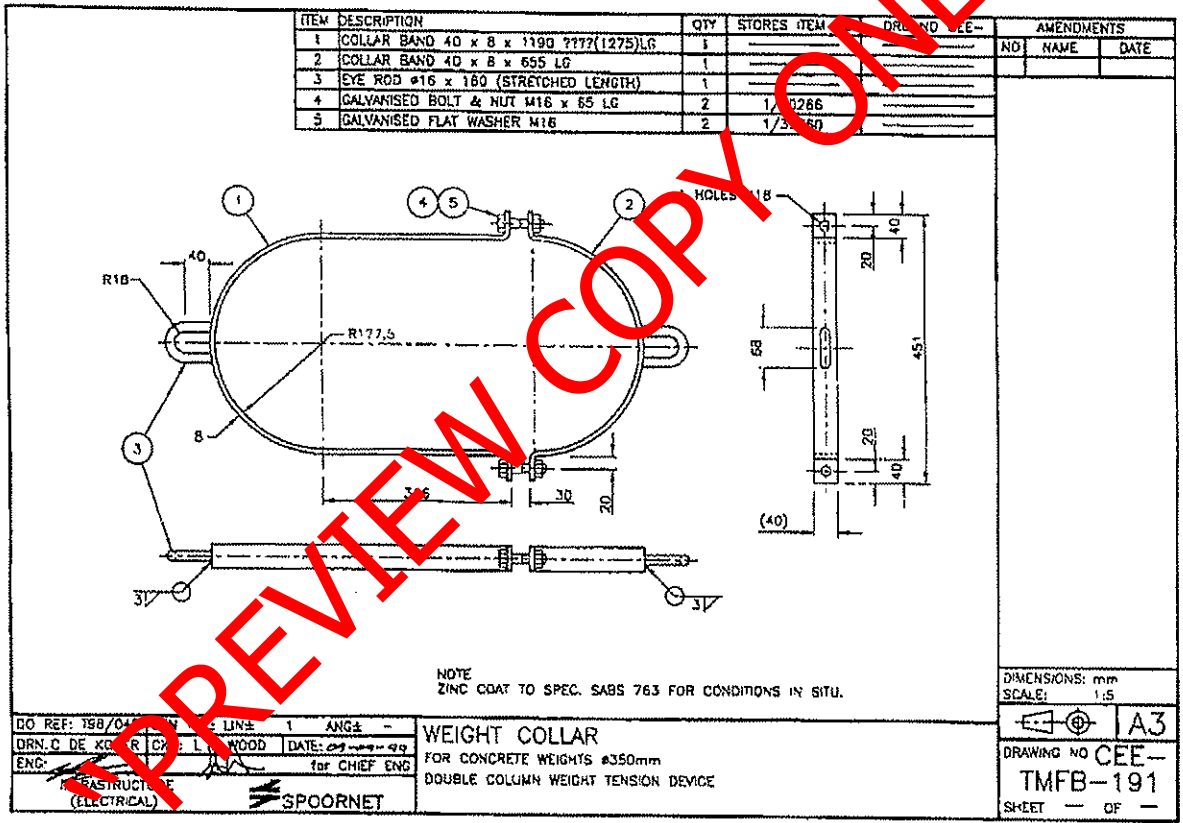
VERSION 1

DO REF: T98/042 GEN TOL: LIN± 1 ANG± -
DRN: C DE KOKER CKD: L E WOOD DATE: 09-09-99
ENG: for CHIEF ENG

EYE ROD FOR BALANCE WEIGHTS
DOUBLE COLUMN WEIGHT TENSION DEVICE

INFRASTRUCTURE
(ELECTRICAL)





PREVIEW COPY ONLY

2

3

Δ

4

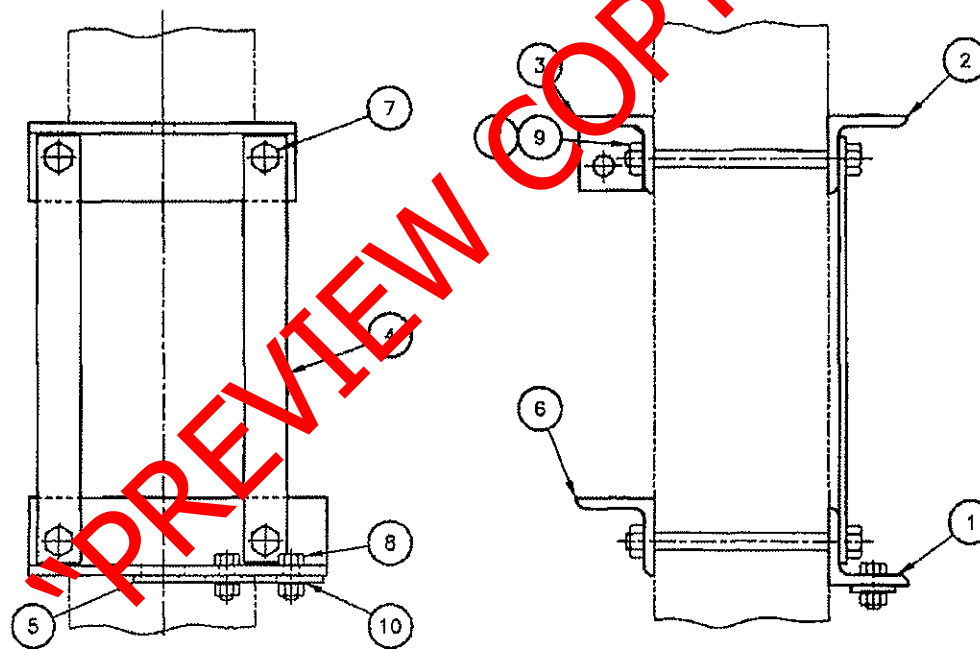
4

Δ

3

2

ITEM	DESCRIPTION	QTY	STORES ITEM NO	DRG NO	VERSION		
					NO	NAME	DATE
1	ANGLE, BRACKET	1		BB0442 ITEM 1 ✓	NO		
2	ANGLE, BRACKET	1		BB0442 ITEM 2 ✓	2		29/6/2000
3	STAY WIRE ATTACHMENT	1		BBB1135			DRG NO'S BBB1135 AND
4	FISH PLATE	2		CEE-TMFB-177 ITEM 1			BBB1136 OF ITEMS 3 & 6
5	ADJUSTING PLATE	1		CEE-TMFB-177 ITEM 2			WAS CEE-TMFB-58 & 52.
6	CLAMPING BRACKET	1		BBB1136			DO REF: CDO/639
7	BOLT AND NUT, STEEL, HEX, HD GALV, M20 x 255 LG	4					
8	BOLT AND NUT, STEEL, HEX, HD GALV, M16 x 40 LG	2					
9	WASHER, STEEL, ROUND, GALV, M20	4					
10	WASHER, STEEL, ROUND, GALV, M16	2					



DIMENSIONS: -
SCALE: NTS

A3

DRAWING NO
BBB0444
VERSION 2

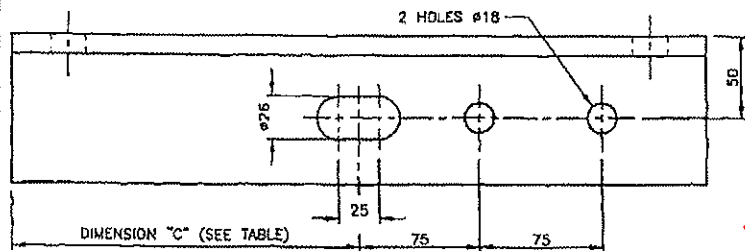
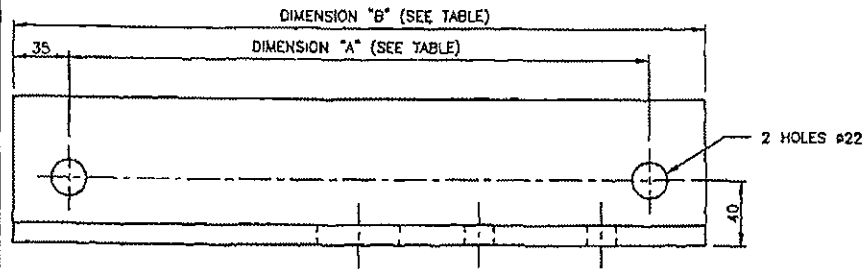
DO REF: CDO/275 GEN TOL: LIN± - ANG± -
DRN: C L BUCKLE CKD: J v DYK DATE: 99-12-10
ENG: W F MANS H A SLJER for CHIEF ENG

CENTRAL DRAWING OFFICE
INFRASTRUCTURE (ELECTRICAL) SPOORNET

**BRACKET ASSEMBLY, MOUNTING OF
WEIGHT TENSIONING DEVICE**
CONCRETE MAST

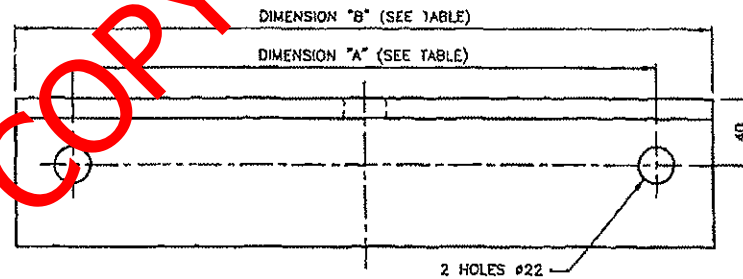
ITEM	DESCRIPTION	QTY	STORES ITEM NO	DRG NO	VERSION		
					NO	NAME	DATE
1	STEEL ANGLE, 90 x 90 x 12 THK	1			2		
2	STEEL ANGLE, 90 x 80 x 12 THK	1					

DIMENSIONS ALTERED AND TABLE ADDED.
DO REF: CDD/839

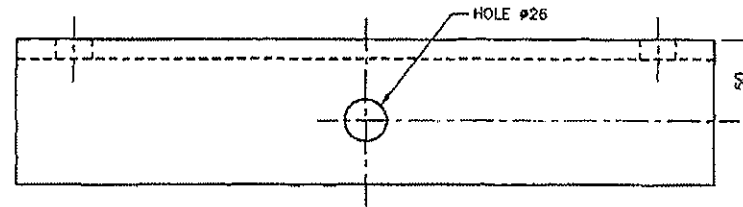


ITEM 1

TABLE			
APPLICATION	DIMENSION "A"	DIMENSION "B"	DIMENSION "C"
CANTILEVER STRUCTURE	260	350	175
DOUBLE BOOM STRUCTURE	320	390	195



ITEM 2



FINISH
ITEM 1 & 2: ZINC COAT TO SPEC. SABS 763 FOR CONDITIONS IN SITU.

"PREVIEW COPY ONLY"

DD REF: CDD/275	GEN TOL: L/N±	1	ANG±	-
DRN: C L BUCKLE	CKD: J v DYK	DATE: 99-12-10		
ENG: W F MANS	H A SLIER	for CHIEF ENG		
CENTRAL DRAWING OFFICE		INFRASTRUCTURE (ELECTRICAL)		
		SPOORNET		

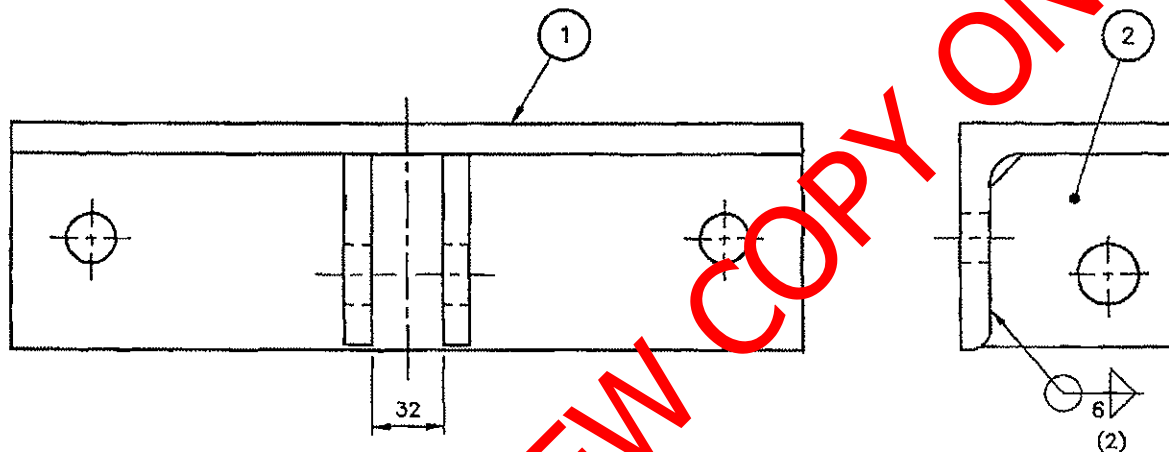
COMPONENTS, MOUNTING OF WEIGHT
TENSIONING DEVICE FOR CONCRETE MAST
25KV AC

DIMENSIONS: mm
SCALE: NTS

A2

DRAWING NO
BBB0442
VERSION 2

ITEM	DESCRIPTION	QTY	STORES ITEM NO	DRG NO	VERSION	
1	ANGLE	1	---	BBB1136	NO	NAME
2	GUSSET PLATE	2	---	CEE-TMHF-16		DATE



FINISH
ZINC COAT TO SPEC. SABS 763 FOR CONDITIONS IN SITU.

DIMENSIONS: mm
SCALE: NTS

A3

DRAWING NO
BBB1135
VERSION 1

DO REF: CDO/639	GEN TOL: LIN± 1	ANG± -
DRN: C L BUCKLE	CKD: J von DYK	DATE: 30/06/2000
ENG:	for CHIEF ENG	
CENTRAL DRAWING OFFICE INFRASTRUCTURE (ELECTRICAL)		



STAY WIRE ATTACHMENT
WEIGHT TENSIONING DEVICE
CONCRETE MAST

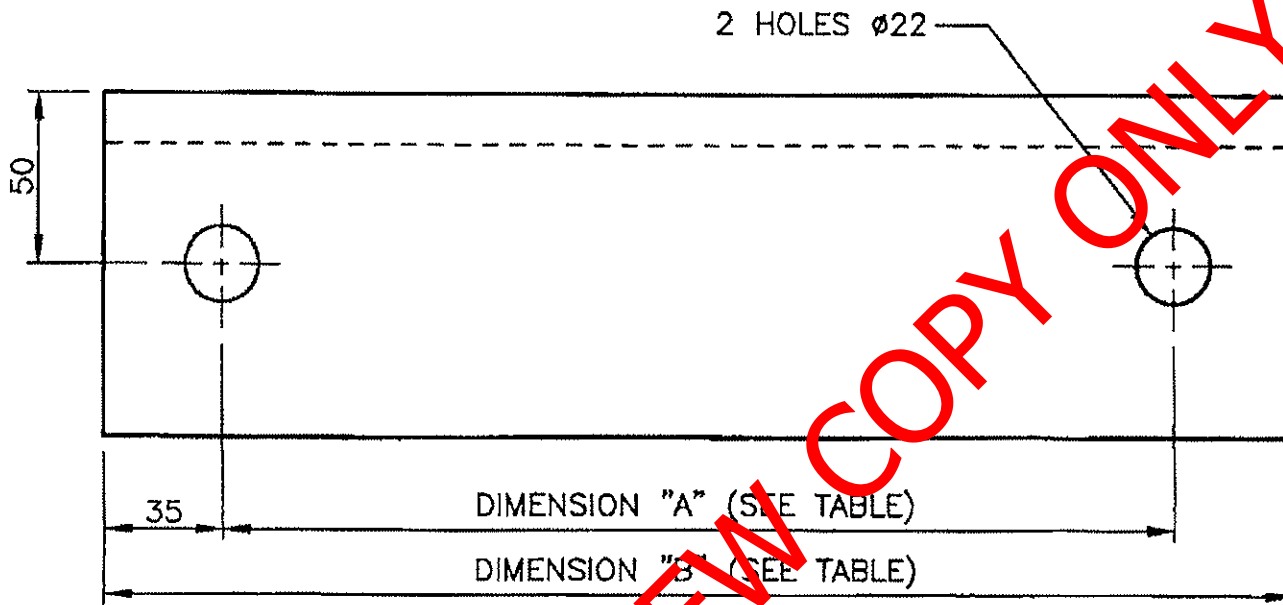


TABLE		
APPLICATION	DIMENSION "A"	DIMENSION "B"
CANTILEVER STRUCTURE	280	350
DOUBLE BOOM STRUCTURE	320	390

VERSION		
NO	NAME	DATE

DIMENSIONS: mm
SCALE: 1:2

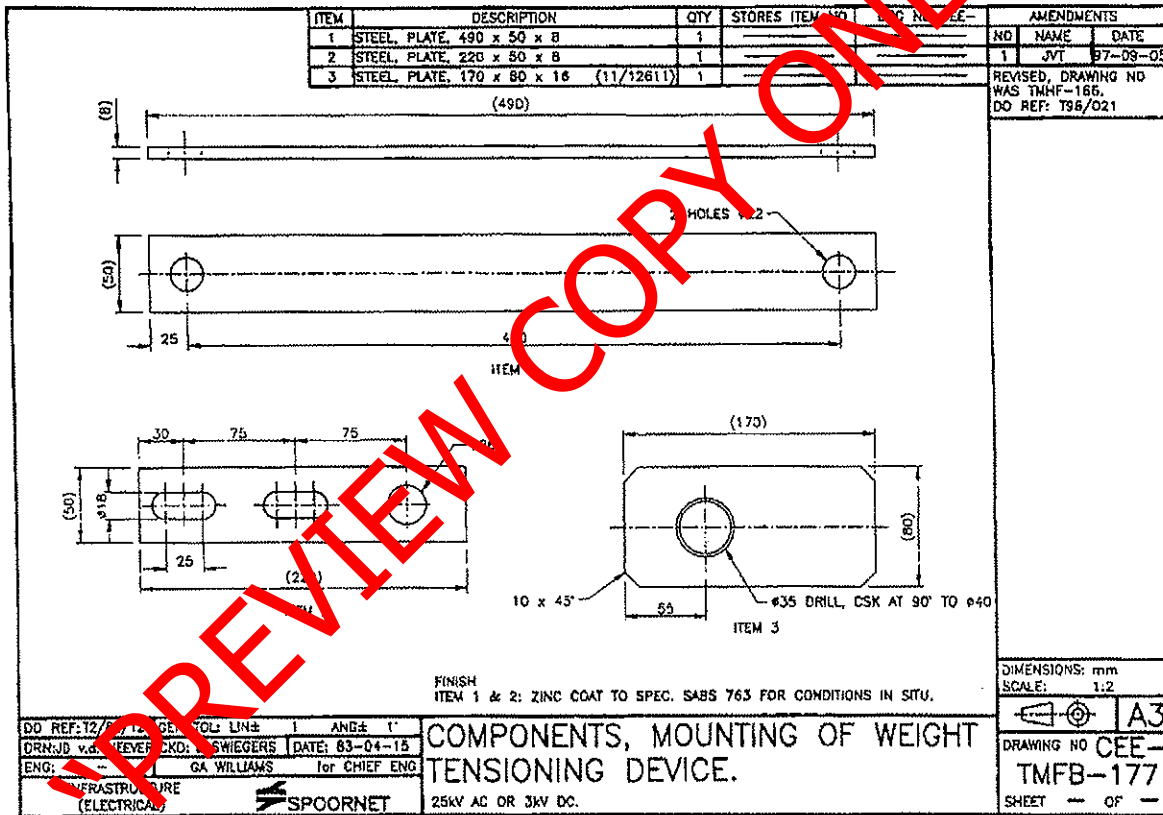


DRAWING NO
BBB1136
VERSION 1

MATERIAL: STEEL, ANGLE, 100 x 100 x 15 x "B"
 REF: CDO/639 GEN TOL: LIN± 1 ANG± -
 DRN: C L BUCKLE CKD: J van DYK DATE: 30/05/2000
 ENG: [Signature] for CHIEF ENG
 CENTRAL DRAWING OFFICE
 INFRASTRUCTURE (ELECTRICAL) **SPOORNET**

BRACKET, STAY WIRE ATTACHMENT
WEIGHT TENSIONING DEVICE
 CONCRETE MAST

"PREVIEW COPY ONLY"



"PREVIEW COPY ONLY"

2
3
4
4
3
2



ARTHUR FLURY AG CH-4543 Deitingen / Switzerland
Telefon +41 (0)32 613 33 66 Internet www.oflury.ch
Telefax +41 (0)32 613 33 68 E-Mail info@oflury.ch



To whom it may concern

CH-4543 Deitingen 13 06 05 11 fg


We, Arthur Flury AG, Switzerland hereby confirm to have newly appointed the company


Traction Engineering
Electrical Infrastructure Specialists
16 Premier Avenue
Princess, Rooderpoort 1125
2030 Wilropark 11331

as our agent for the country of South Africa. Traction Engineering will handle all technical and commercial matters with regard to our full product range.

Yours sincerely,

ARTHUR FLURY AG


Adrian Flury
CEO / President

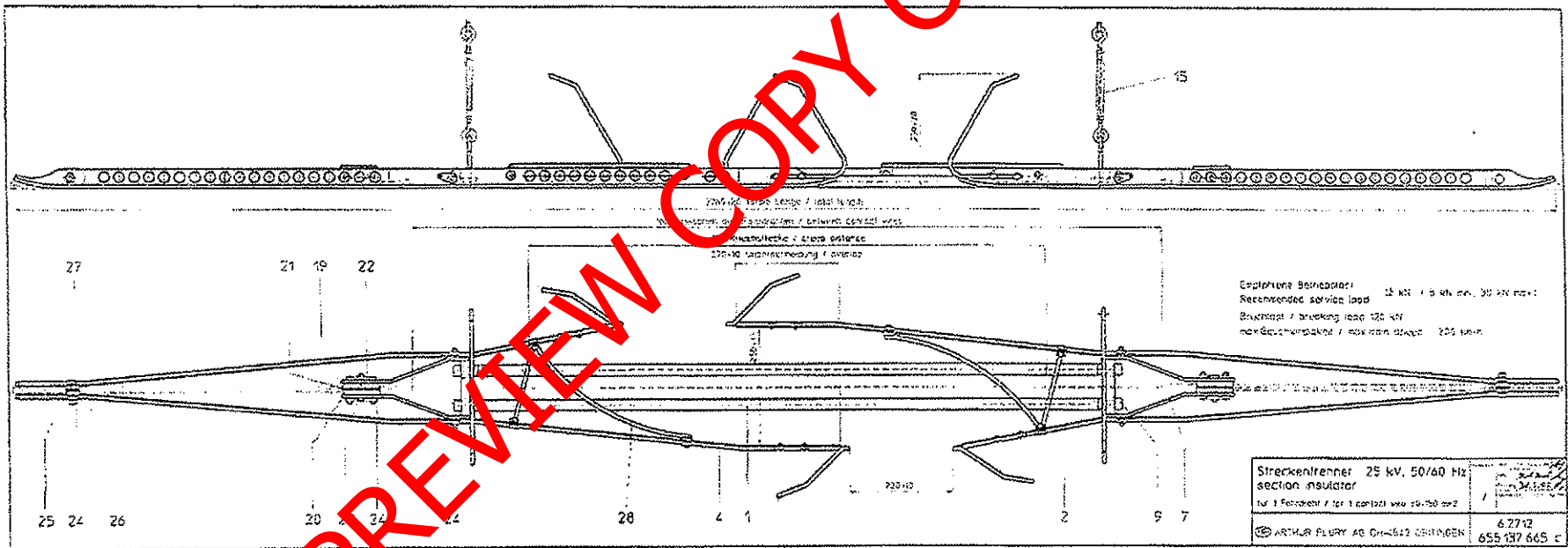

Kurt Kummer
Executive Sales Manager

'PREVIEW COPY ONLY'

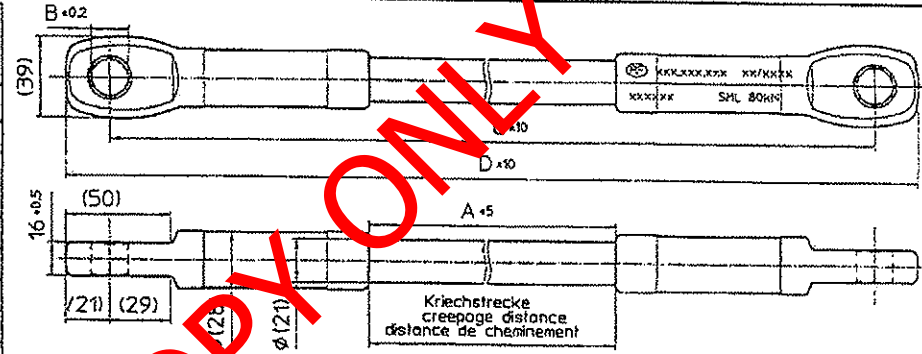
30 OFF

"PREVIEW COPY ONLY"

2



Artikel Nummer Number No d'article	A	B	C	D
657.026.000	300	17	550	592
657.027.000	600	17	850	892
657.022.000	700	17	950	992
657.020.715	800	17	1050	1092
657.014.716	1100	17	1350	1392
657.038.000	1400	17	1650	1692
657.012.725	1500	17	1750	1792
657.013.728	2000	17	2250	2292
657.008.724	2500	17	2750	2792
657.015.715	800	20.25	1050	1092
657.034.000	860	20.25	1110	1152
657.011.716	1100	20.25	1350	1392
657.010.725	1500	20.25	1750	1792
657.016.728	2000	20.25	2250	2292
657.007.724	2500	20.25	2750	2792
657.029.000	300	21.5	550	592
657.035.000	400	21.5	650	692
657.027.010	600	21.5	850	892
657.021.716	1100	21.5	1350	1392
657.032.000	1150	21.5	1400	1442
657.009.725	1500	21.5	1750	1792
657.017.728	2000	21.5	2250	2292
657.019.724	2500	21.5	2750	2792
657.025.728	2000	19	2250	2292
657.023.724	2500	19	2750	2792



Material : rostfrei 1.4435 . GFK - Stab mit PTFE Mantel
 Material : stainless steel 1.4435 . fiberglass rod PTFE coated

Kriechstrecke A creep distance A distance de cheminement A	300	600	700	800	1100	1500	2000	2500	mm
Nennstehwechselspannung trocken dry power-frequency withstand voltage tension de contournement a sec	70	140	140	185	275	360	395	460	kV (RMS) 50 Hz
Nennstehwechselspannung unter Regen wet power-frequency withstand voltage tension de contournement sous pluie	38	70	70	95	140	185	230	395	kV (RMS) 50 Hz
Überschlagspannung trocken power-frequency flashover voltage dry tension de décharge sèche	≥ 115	235	270	310	425	570	775	960	kV/50Hz
Stehblitzstossspannung lightning impulse withstand voltage résistance a la tension de décharge fulgurante	75	145	145	250	325	450	550	950	kV 1.2/50 µs
Bruchlast auf Zug breaking load of tensile charge de rupture a la traction	≥ 80	80	80	80	80	80	80	80	kN
maximale Betriebslast auf Zug maximal working tensile load FOS = 3.3 traction maximal en service	24.3	24.3	24.3	24.3	24.3	24.3	24.3	24.3	kN
nomielle Dauertlast auf Zug nominal working tensile load traction nominelle	15	15	15	15	15	15	15	15	kN
Bruchlast auf Biegung charge de rupture a la flexion breaking load of bending	250	250	250	250	250	250	250	250	Nm
Gewicht, weight, poids	1.2	1.4	1.5	1.6	1.8	2.1	2.5	2.9	kg

Tragseilisolatoren mit Oese Catenary insulators Isolateurs pour caténaire	Maßstab Scale Echelle	Gez. PW 27.107	
	1:2	Gepr. 07.11.11	
	Frageg. 2.11.11		
ARTHUR FLURY AG CH-4543 DEITINGEN		6.3111-ext	Appr. h