

NB. See Subsection 13.8.3  
for Sign Sizes.

Fig. 13.32 Maintenance in Road Reserve (off the road)

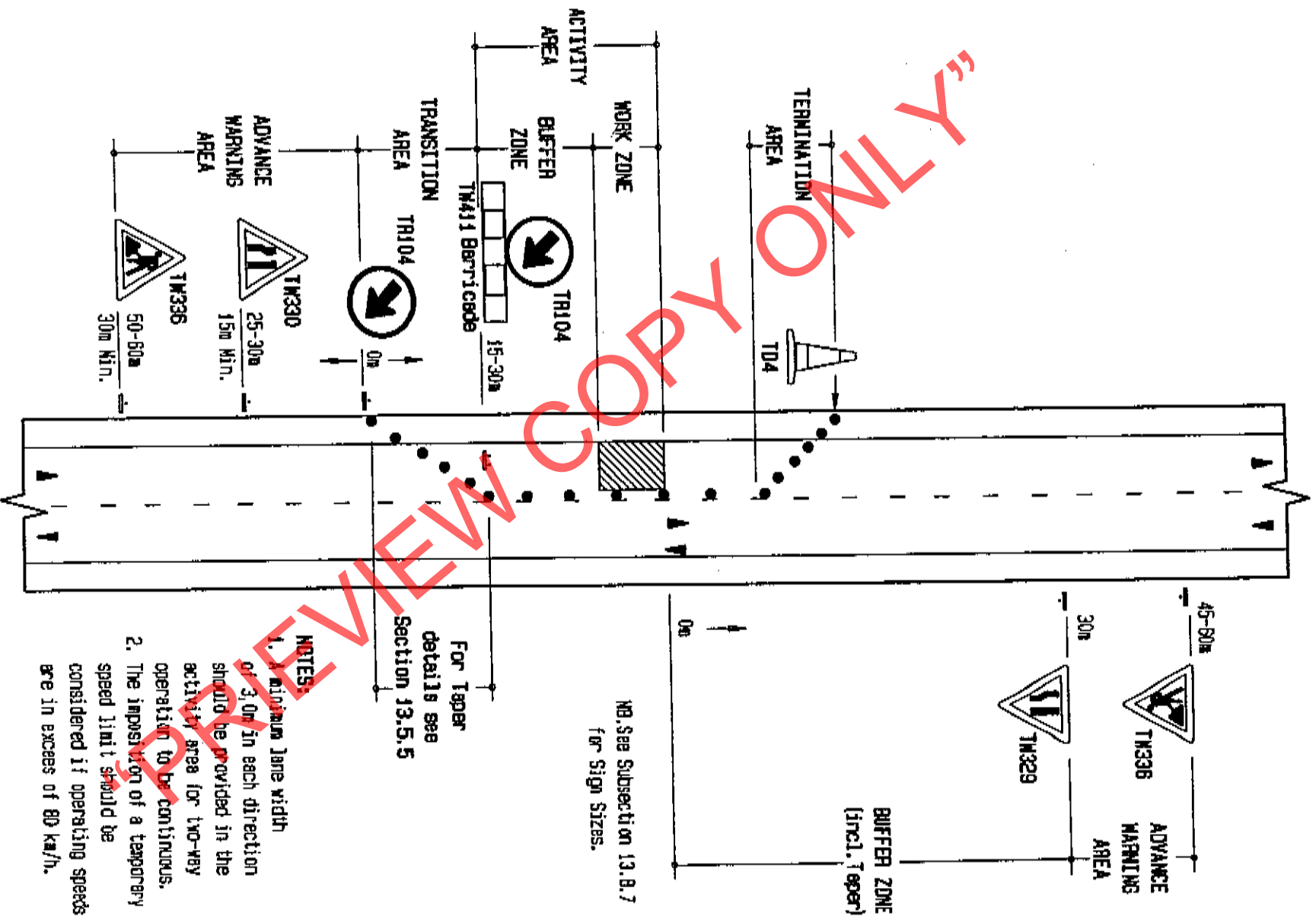


Fig. 13.36 Localised Small Work Site

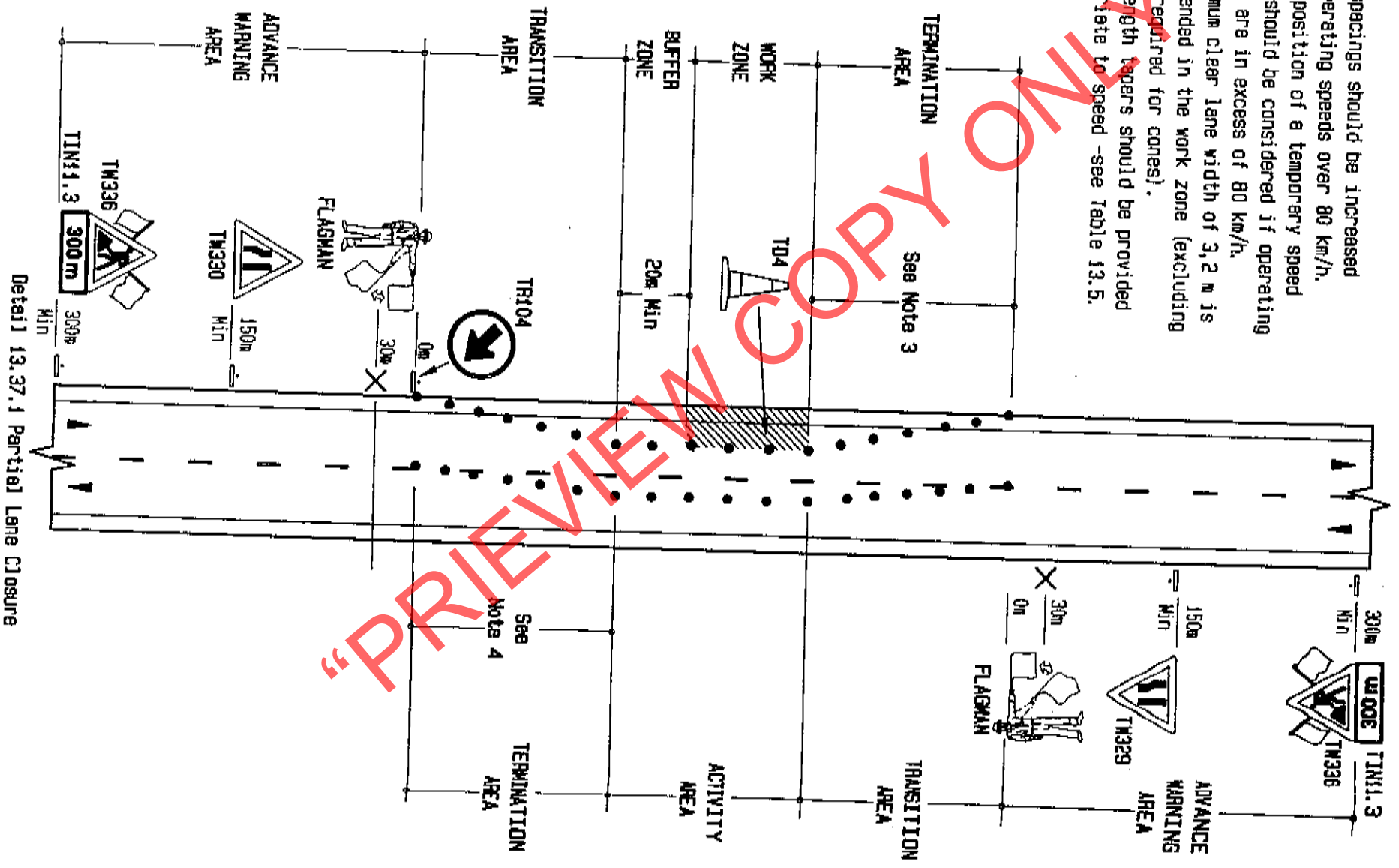
- NOTES:**
1. A minimum lane width of 3.0m in each direction should be provided in the activity area for two-way operation to be continuous.
  2. The imposition of a temporary speed limit should be considered if operating speeds are in excess of 80 km/h.

For Taper details see Section 13.5.5

NB. See Subsection 13.8.7 for Sign Sizes.

# SHORT TERM WORKS

- NOTES:**
1. Sign spacings should be increased for operating speeds over 80 km/h.
  2. The imposition of a temporary speed limit should be considered if operating speeds are in excess of 80 km/h. A minimum clear lane width of 3,2 m is recommended in the work zone (excluding space required for cones).
  3. Full length tapers should be provided appropriate to speed - see Table 13.5.

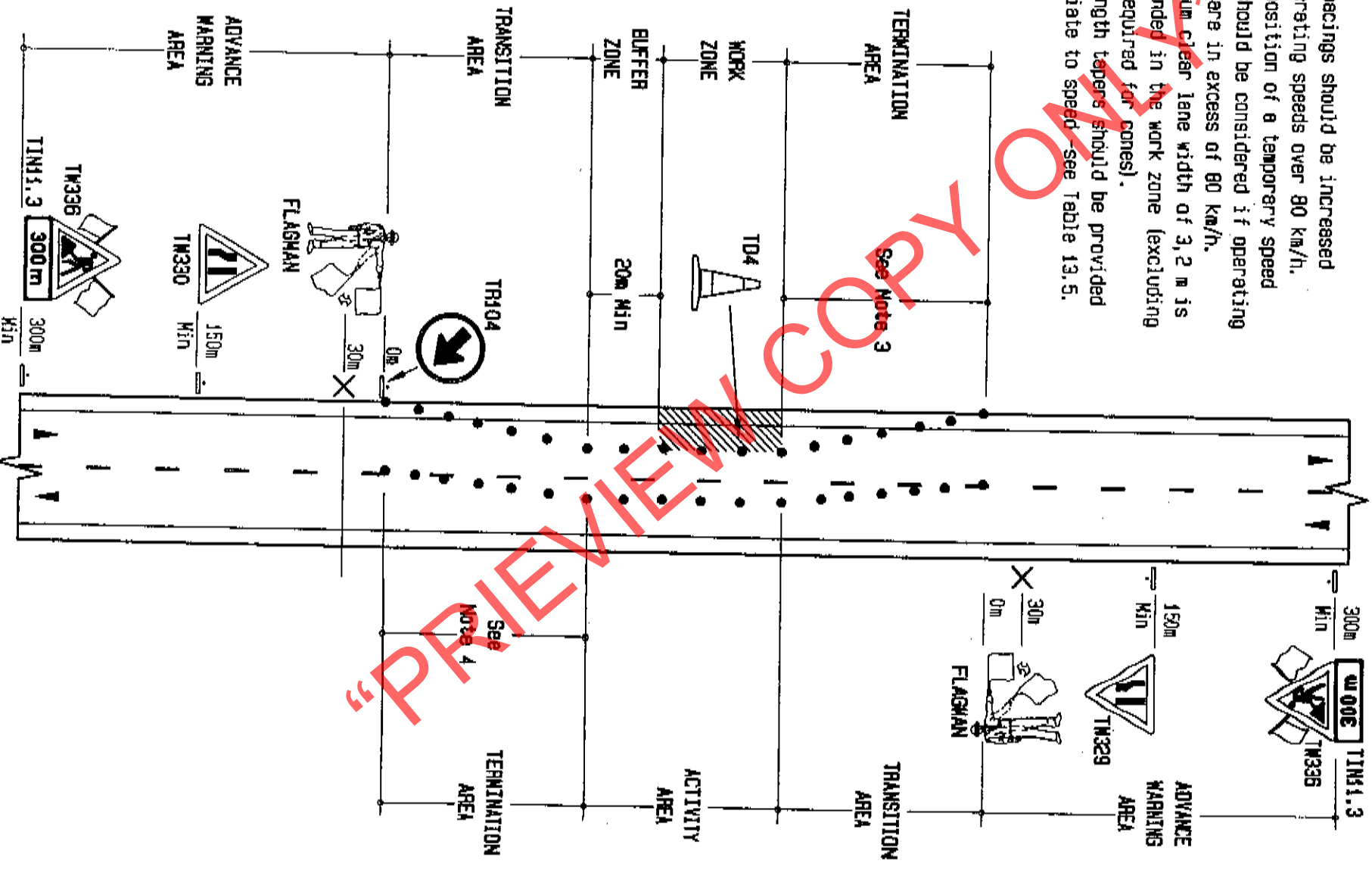


Detail 13.37.1 Partial Lane Closure

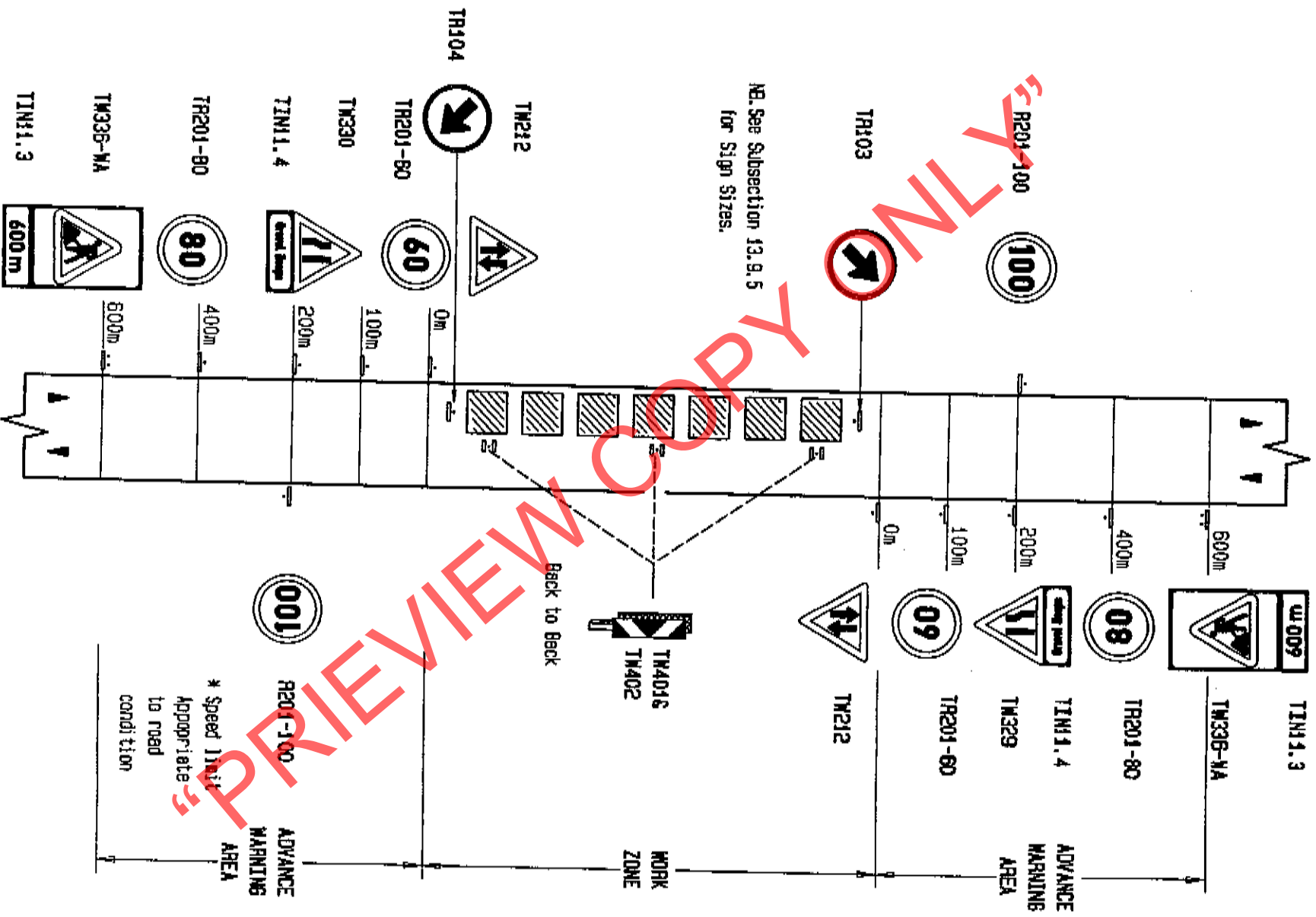
## SHORT TERM WORKS

### NOTES:

1. Sign spacings should be increased for operating speeds over 80 km/h.
2. The imposition of a temporary speed limit should be considered if operating speeds are in excess of 80 km/h.
3. A minimum clear lane width of 3,2 m is recommended in the work zone (excluding space required for cones).
4. Full length tapers should be provided appropriate to speed—see Table 13.5.







NB: See Subsection 13.9.5 for Sign Sizes.

Fig. 13.46 Gravel Roads - Gravel Heaps



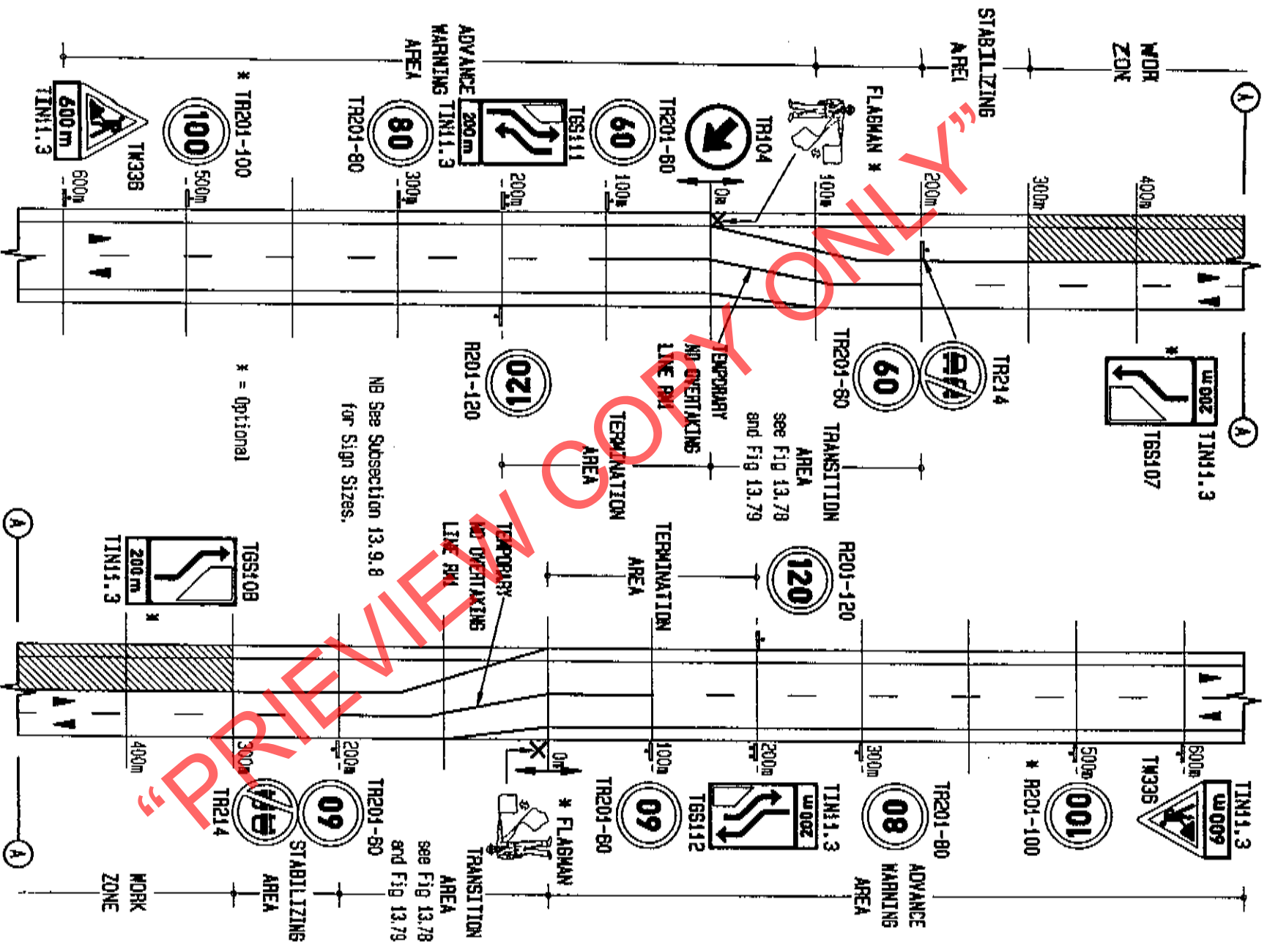


Fig. 13.49 Reduced Width Operation - 2-Way Traffic