

**ELEVATION OF FENCE**  
SCALE: 1:20

**SPECIFICATION**

- 1.0 POSTS  
70 x 70 x 6mm x 3000 long galv. angles set vertically into foundations at 3000mm centres. Refer to sheets 2 & 3 for post details.
- 2.0 FOUNDATIONS:  
700 x 400 x 400 (15MPa/19mm stone at each post. Ground conditions may require additional conc.
- 3.0 MESH PANELS:  
Constructed from high tensile steel with a weld strength of 75%.  
Apertures on types 358 (4mm) are 72.2 x 8.7mm & 3510 (3mm) single are 73.2 x 9.7mm.  
Single mesh panels: coated with ZincAlu Super as SANS spec. 10244-2: 2003.
- 4.0 RAILS:  
Refer to sheet 4 for details of types of rails.
- 5.0 COVER STRIPS:  
Refer to sheets 2 & 3 for details.
- 6.0 ASSEMBLY DETAILS:  
Refer to sheet 5.
- 7.0 FIXINGS:  
Rails to posts:  
Stainless steel 8mm dia. x 40mm cup square security bolts with washers & anti-vandal shear off nuts.  
Cover plates to posts:  
Countersunk stainless steel 8mm dia. x 40mm button head security screws with washers & shear off nuts.  
Mesh to rail:  
As rails to posts, length to be 30mm.
- 8.0 GALVANISING:  
All posts, rails and cover plates to be hot dip galvanised after manufacture in accordance with ISO 1461, for top & bottom rails to be 55 microns, 70 microns for posts & cover plates.

Specification continues on sheet 2.

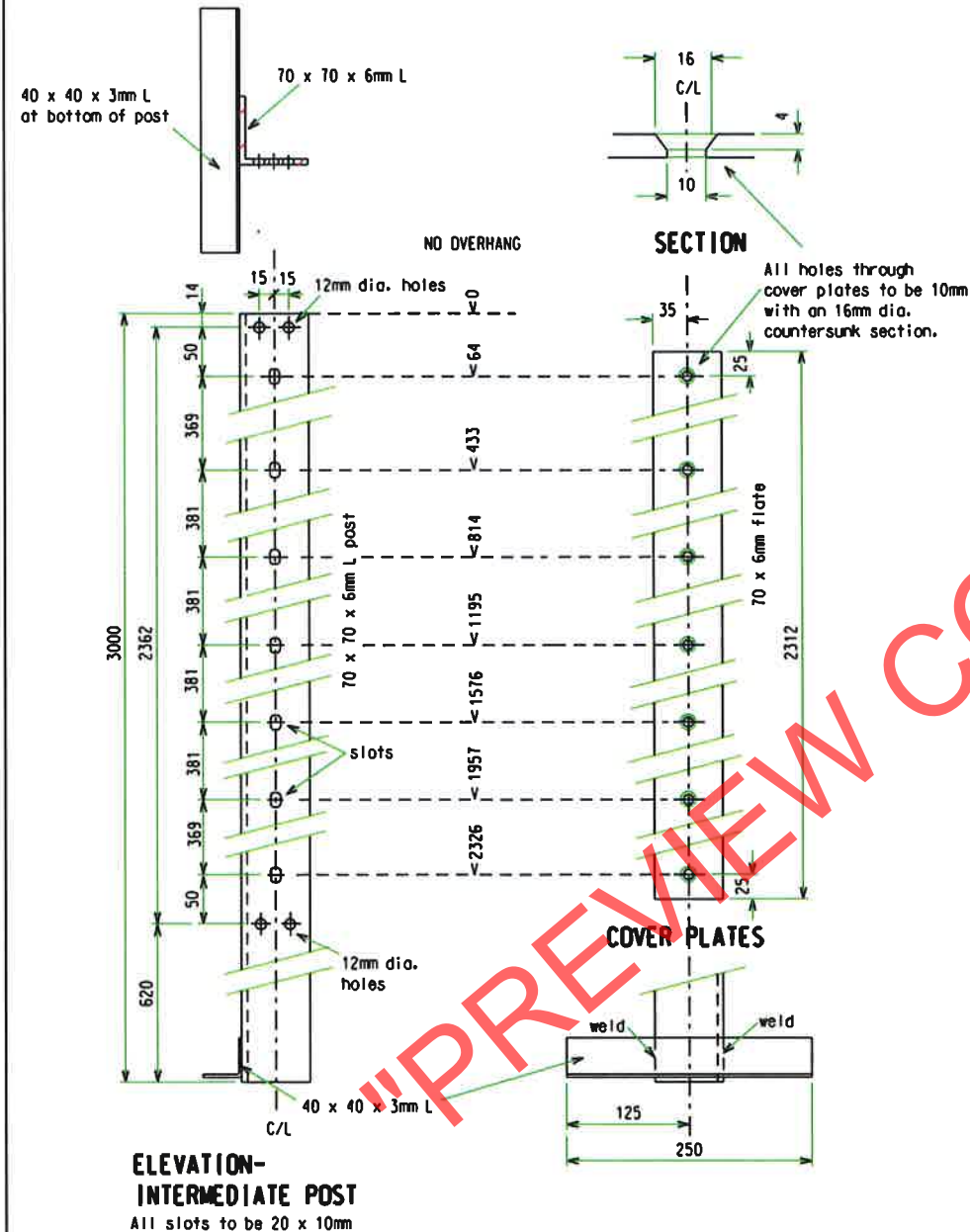
3	Logo changed.	LDJ	11/04/2007
2	Notes and title block changed.	LDJ	06/10/2005
1	Galvanising spec. altered.	LDJ	19/06/2002
Rev	Revision description	by	Date

**BETA FENCE**  
SOUTH AFRICA (PTY) LTD

Gooderson Ave Blackheath 7581. Tel: 021 905-4535  
www.betalence.co.za

This drawing and design are the property of Betalence South Africa (Pty) Ltd

Tech. Approved: LDJ	Title: <b>STANDARD FENCE TYPE 1 2400 HIGH ELEVATION</b>	sheet 1 of 5	Rev: <b>3</b>
O.C. Approved: AV			
Manag. Approved: GB			
Date: 03/09/2001	Drwg No:	<b>BB-STD-1 sht 1</b>	
Scale: 1:20			



**ELEVATION-  
INTERMEDIATE POST**  
All slots to be 20 x 10mm

SPECIFICATION cont'd from sheet 1

9.0 WORKMANSHIP:  
All welds to be continuous unless otherwise specified.  
All welds, cutting and holes to be buffed smooth prior to galvanising.  
All weld splashes to be removed prior to galvanising.

10.0 STEEL SECTIONS:  
All steel sections to be checked for straightness before manufacture and after galvanising.

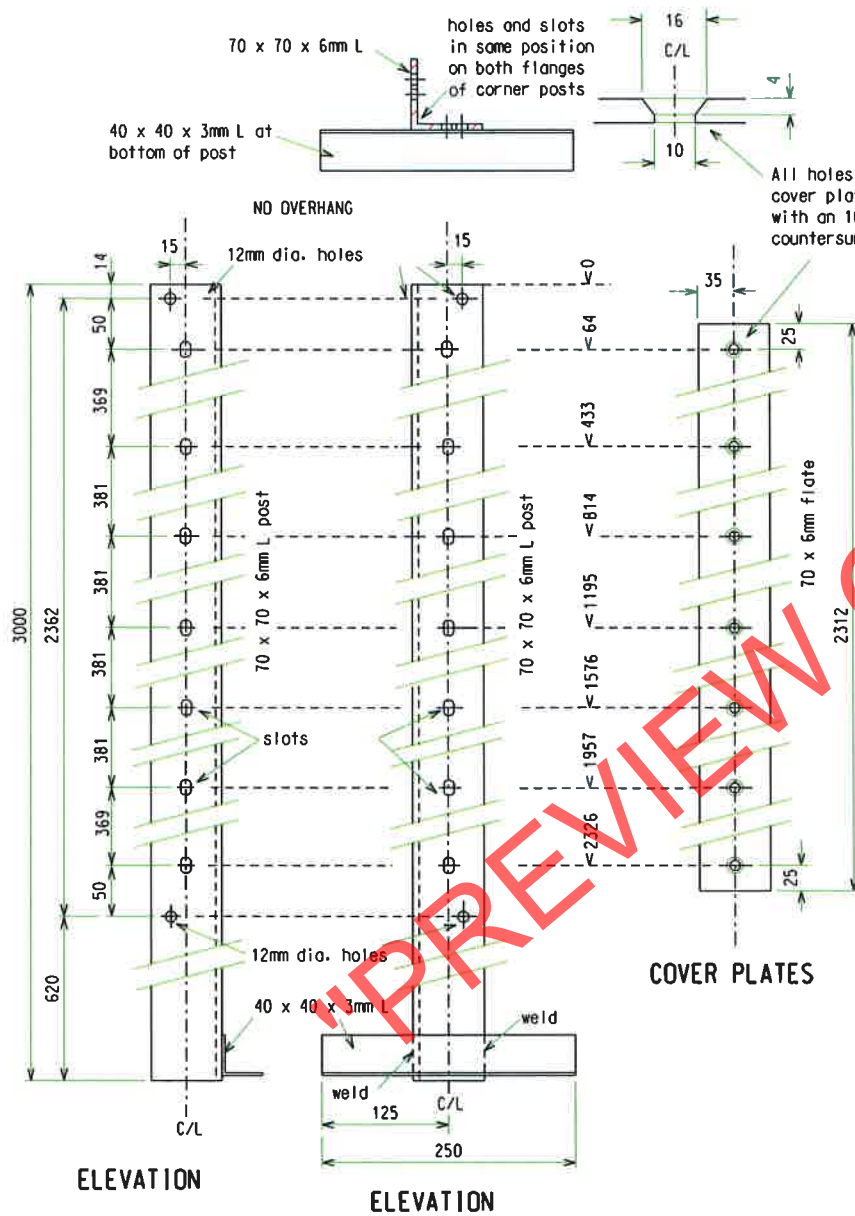
11.0 SERRATED STRIP:  
Clamp angle in a jig. Spot weld strip at ends to the angle and intermediately along length of strip at 200mm c/c on alternating sides. Ensure welds have cooled before removing from the jig.

PREVIEW COPY ONLY

Tolerances:  
position of holes: 2mm  
other dimensions: 5mm in 3000.  
Third angle projection unless indicated.

Rev	Revision description	by	Date
4	Logo changed.	LDJ	11/04/2007
3	Rail and corner post removed.	LDJ	06/10/2005
2	Drawing redrawn.	LDJ	21/07/2005
1	Slots changed to 12mm holes.	LDJ	21/07/2005

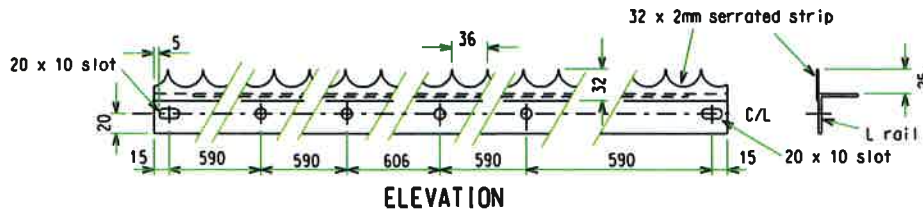
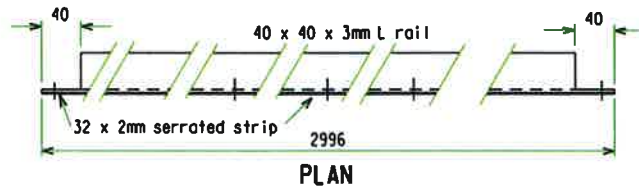
<b>B B</b> <b>BETAFENCE</b> SOUTH AFRICA (PTY) LTD		<b>STANDARD FENCE TYPE 1 3000 INTERMEDIATE POST &amp; COVER PLATE DETAILS</b>	
Gooderson Ave Blackheath 7581. Tel: 021 905-4535 www.betafence.co.za			
Tech. Approved: LDJ		Date: 10/10/2001	
D.C. Approved: AV		Scale: 1:5	
Wing. Approved: GB		Rev: 4	
Date: 10/10/2001		Drawg No: BB-STD-1 sht 2 of 5	
This drawing and design are the property of Betafence South Africa (Pty) Ltd			



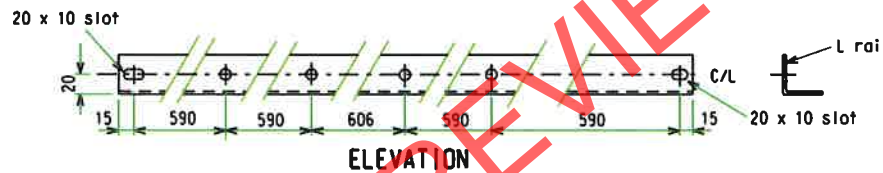
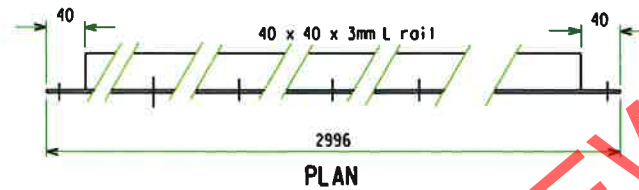
All holes through cover plates to be 10mm with an 16mm dia. countersunk section.

Tolerances:  
position of holes: 2mm  
other dimensions: 5mm in 3000.  
Third angle projection unless indicated.

		2	Logo changed.	LDJ	11/04/2007
		1	Drawing revised.	LDJ	06/10/2005
<b>BETAFENCE</b> SOUTH AFRICA (PTY) LTD		Title: <b>STANDARD FENCE TYPE 1 3000 CORNER POST &amp; COVER PLATE DETAILS</b>			
Gooderson Ave Blackheath 7581. Tel: 021 905-4535 www.betafence.co.za		Rev Revision description by Date			
This drawing and design are the property of Betafence South Africa (Pty) Ltd		Tech. Approved: LDJ O.C. Approved: AV Mang. Approved: GB			
		Date: 06/10/2005 Scale: 1:5		Drwg No: BB-STD-1 sheet 3 of 5 Revi: sht 3 2	



**RAIL DETAILS - type R1**  
All round holes to be 11mm dia.



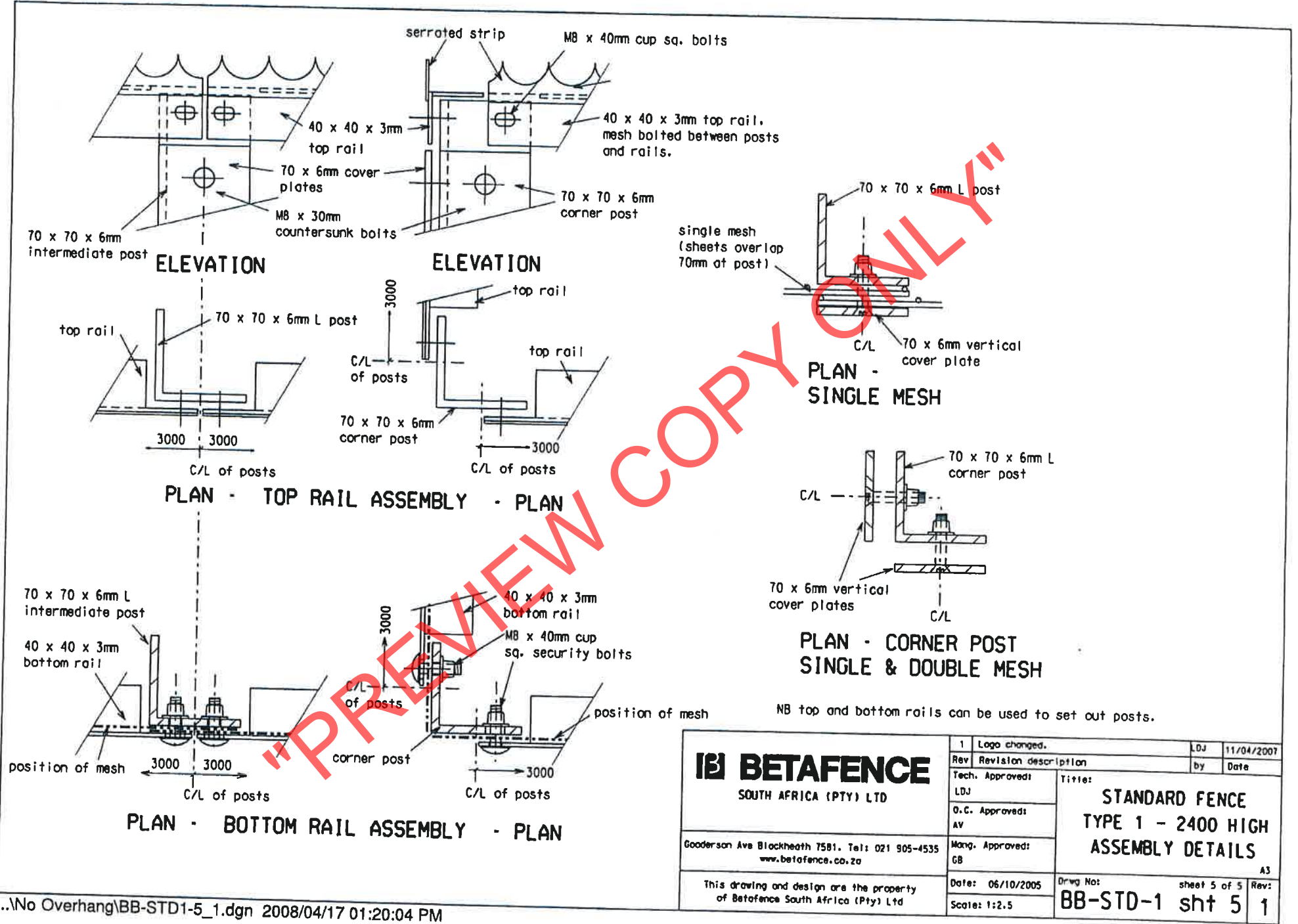
**RAIL DETAILS - type R2**  
All round holes to be 11mm dia.

**RAIL SPECIFICATION:**  
All steel sections to be checked for straightness before manufacture and after galvanising.

Clamp angle in a jig. Spot weld strip at ends to angle and intermediately along length of strip at 200mm c/c on alternate sides. Ensure welds have cooled before removing from the jig.

Tolerances:  
position of holes: 2mm  
other dimensions: 5mm in 3000

<p>Gooderson Ave Blackheath 7581. Tel: 021 905-4535 www.betafence.co.za</p> <p>This drawing and design are the property of Betafence South Africa (Pty) Ltd</p>	1	Logo changed.	LDJ	11/04/2007
	Rev	Revision description	by	Date
	Tech. Approved: LDJ	<b>STANDARD FENCE TYPE 1 TOP &amp; BOTTOM RAIL DETAILS</b>		
	D.C. Approved: AV			
Mang. Approved: GB	Date: 10/10/2001	Scale: 1:5	Drwg No: BB-STD-1	sheet 4 of 5 Rev: 1



PREVIEW COPY ONLY

<b>B BETA FENCE</b> SOUTH AFRICA (PTY) LTD  Gooderson Ave Blackheath 7581. Tel: 021 905-4535 www.betafence.co.za	1	Logo changed.	LDJ	11/04/2007
	Rev	Revision description	by	Date
	Tech. Approved		Title:	
	LDJ		<b>STANDARD FENCE          TYPE 1 - 2400 HIGH          ASSEMBLY DETAILS</b>	
D.C. Approved		A3		
AV		Mang. Approved:		
GB		Date: 06/10/2005		
This drawing and design are the property of Betafence South Africa (Pty) Ltd		Scale: 1:2.5		
		Drwg No: <b>BB-STD-1</b> sheet 5 of 5 Rev: <b>1</b>		