



Transnet SOC Limited
Transnet RME

REQUEST FOR QUOTATION

BOARD LIST TFR RME
TRANSNET FREIGHT RAIL - RME
PROCUREMENT DEPARTMENT
2000

Registration Number: 1990/000900/06
Vat Number : 4720103177

Attention:

Telephone Number :
Fax Number :
Vendor Number :2004815

Quotation Deadline Date : 11.07.2014
Quotation Deadline Time : 16H00

REQUEST for QUOTATION
Transnet RME
RFQ Number / Date
6000201583 / 04.07.2014
Contact Person / Telephone
Anne Mngqo / 051 361 1759
Return to FAX Number/EMAIL
031820000 / TCPtendersDurban@Transnet.net

PREVIEW COPY ONLY

Item	Material	Description	RFQ Qty	UoM	Required Del date	Confirm Del date	Unit Price Excl	Total Price Excl
00010		PIVOT FITTING,CEE-TNB-6	50	ea	18.07.2014			
		PIVOT FITTING,CEE-TNB-61						
00020		SWIVEL CLIP ASSEMBLY,(T	100	ea	18.07.2014			
		SWIVEL CLIP ASSEMBLY,(TN-26) AND (TN-268)						
00030		PARALLEL CLAMP 162 WITH	60	ea	18.07.2014			
		PARALLEL CLAMP 162 WITH LINER, ITEM 4,CEE-TNB-55 AND CEE-TNB-90						



Transnet SOC Limited
 Transnet RME
 BOARD LIST TFR RME
 TRANSNET FREIGHT RAIL - RME
 PROCUREMENT DEPARTMENT
 2000
 YOUR VAT NUMBER WITH US: NOT

REQUEST FOR QUOTATION

Registration Number: 1990/000900/06
 Vat Number : 4720103177

Attention:

 Telephone Number :
 Fax Number :
 Vendor Number :2004815

Quotation Deadline Date : 11.07.2014
Quotation Deadline Time : 16H00

REQUEST for QUOTATION
 Transnet RME
RFQ Number / Date
 6000201583 / 01.07.2014
Contact Person / Telephone
 Anne Mongie / 031 361 1759
Return to FAX Number/EMAIL
 0318 0000 / TCPtendersDurban@Transnet.net

Item	Material	Description	RFQ Qty	UoM	Required Del date	Confirm Del date	Unit Price Excl	Total Price Excl
00040		DLC CLAMP 500 ALI X 160	5	ea	18.07.2014			
		DLC CLAMP 500 ALI X 160 CU, TNB-9						
00050		SWIVEL CLAMP RETAINER T	50	ea	18.07.2014			
		SWIVEL CLAMP RETAINER, TND-25						
00060		MID-SPAN TENSION SPLICE	50	ea	18.07.2014			
		MID-SPAN TENSION SPLICE, STEEL INNER SPLICE,(BBB3594)						

"PREVIEW COPY"



Transnet SOC Limited
 Transnet RME
 BOARD LIST TFR RME
 TRANSNET FREIGHT RAIL - RME
 PROCUREMENT DEPARTMENT
 2000
 YOUR VAT NUMBER WITH US: NOT

REQUEST FOR QUOTATION

Registration Number: 1990/000900/06
 Vat Number : 4720103177

Attention:
 Telephone Number :
 Fax Number :
 Vendor Number :2004815

Quotation Deadline Date : 11.07.2014
Quotation Deadline Time : 16H00

REQUEST for QUOTATION
 Transnet RME
RFQ Number / Date
 6000201583 / 01.07.2014
Contact Person / Telephone
 Anne Mongie / 031 361 1759
Return to FAX Number/EMAIL
 031810000 / TCPtendersDurban@Transnet.net

Item	Material	Description	RFQ Qty	UoM	Required Del date	Confirm Del date	Unit Price Excl	Total Price Excl
00070		INNER SPLICE STEEL REIN	50	ea	18.07.2014			
		INNER SPLICE STEEL REINFORCING,(BBB3596)						
00080		TENSION SPLICE 600MM LO	50	ea	18.07.2014			
		TENSION SPLICE 600MM LONG,(BBB3593)						

FOR MORE INFORMATION PLEASE CONTACT THOBEKA 0837791651

QUOTES MUST BE SENT TO : TCPtendersDurban@transnet.net
 CLOSING DATE 11 JULY 2014 AT 16H00.
 PLEASE ATTACH COPIES OF BBBEE AND TAX CLEARANCE CERTIFICATES
 ALL PROCUREMENT RELATED QUERIES TO BE DIRECTED TO :
 ANNE MONGIE : 031 361 1759
 E-MAIL : anne.mongie@transnet.net



Transnet SOC Limited
 Transnet RME
 BOARD LIST TFR RME
 TRANSNET FREIGHT RAIL - RME
 PROCUREMENT DEPARTMENT
 2000
 YOUR VAT NUMBER WITH US: NOT

REQUEST FOR QUOTATION

Registration Number: 1990/000900/06
 Vat Number : 4720103177

Attention:
 Telephone Number :
 Fax Number :
 Vendor Number :2004815

Quotation Deadline Date : 11.07.2014
Quotation Deadline Time : 16H00

REQUEST for QUOTATION
 Transnet RME
RFQ Number / Date
 6000201583 / 04.07.2014
Contact Person / Telephone
 Anne Mangle / 031 361 1759
Return to FAX Number/EMAIL
 031800000 / TCPtendersDurban@Transnet.net

Delivery Address
 TFR RME Durban
 100 Eel Road
 Bayhead, Durban
 4001

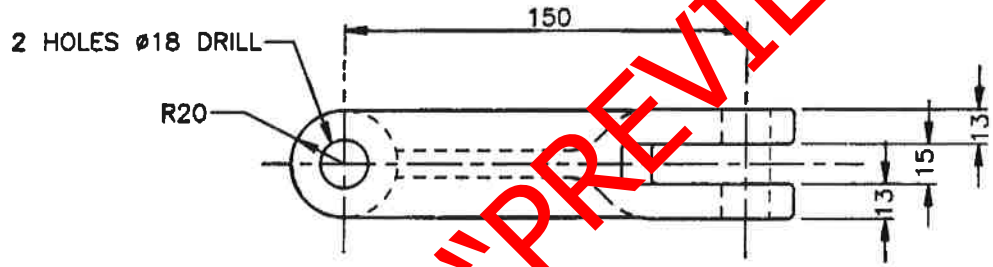
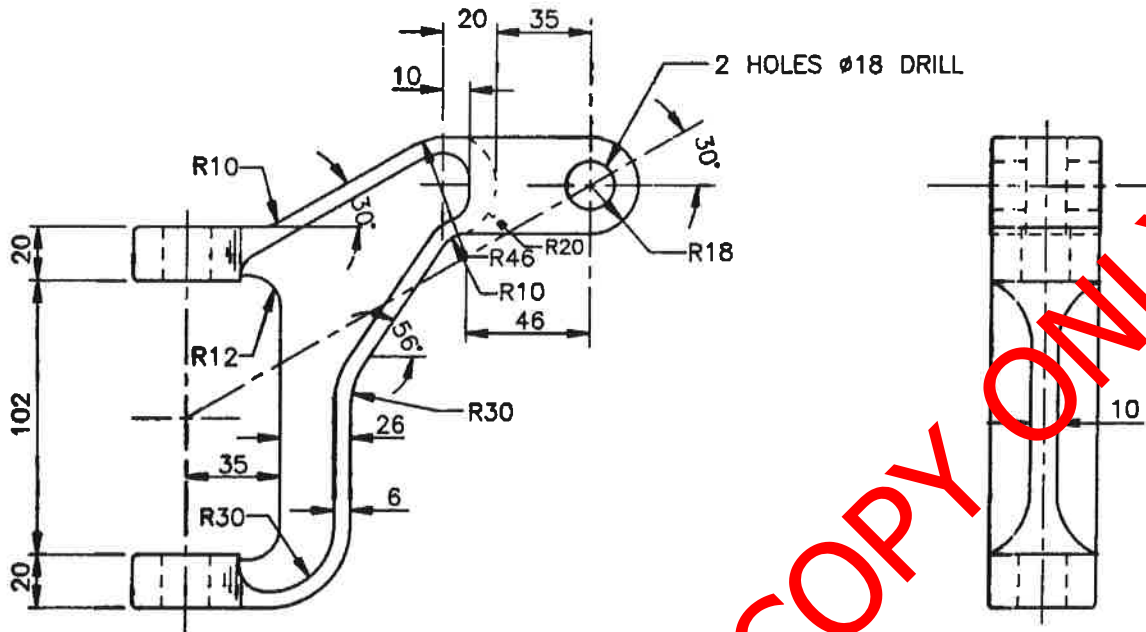
This RFQ is subject to the following conditions:

1. Price/s : The price/s quoted in SA currency and is excluding of V.A.T
2. Delivery : The price/s quoted should include delivery cost to the delivery address stated on the RFQ
3. Returnables : A valid tax clearance certificate and BBBEE certificate from a SANAS accredited verification agency attached to quotation for all quotes above R30 000.
 Please note that only the official Transnet RFQ will be accepted and all other correspondence to be attached to the original
4. Safety : To confirm to Transnet Capital Projects Health & Safety plan and specification; HAS-std-0001, copy available on request.
5. Confirmation: To confirm your participation in this tender process please sign and return this document as immediate effect prior to the quotation deadline.
6. Negotiations: The Employer may elect to negotiate the final terms of the contract/order with the preferred tenderer in accordance with Clauses F.2.17 and F.3.13 of the CIDB Standard Conditions of Tender. A copy of which is available upon request.

"PREVIEW COPY"

Signature _____

Date _____



- NOTES
1. UNSPECIFIED RADII R2.
 2. ZINC COAT TO SABS 763 FOR CONDITIONS IN SITU.
 3. CASTING TO BE CLEARLY MARKED SPOORNET.

AMENDMENTS		
NO	NAME	DATE
1	JVT	97-04-07

REVISED, DRG NO WAS CEE-TN-160.
DO REF: T96/001

MATERIAL: BLACKHEART MALLEABLE IRON TO SABS 1190 GRADE B340

DO REF: T80/65	GEN TOL: LIN± 0,8	ANG± 1°
DRN: T HUMAN	CKD: R McMILLAN	DATE: 80-02-11
ENG: -	G WILLIAMS	for CHIEF ENG

**PIVOT FITTING
CANTILEVER STRUT**

INFRASTRUCTURE
(ELECTRICAL)



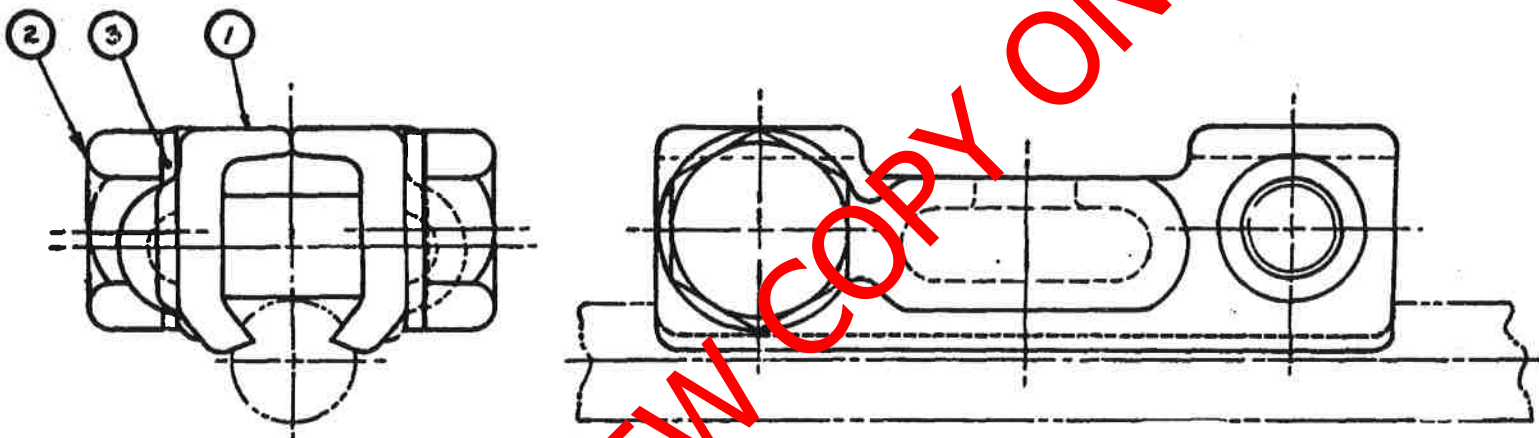
STORES NO: 54/11416
DIMENSIONS: mm
SCALE: 1:2



DRAWING NO CEE-
TNB-61
SHEET - OF -

ITEM	DESCRIPTION-BESKRYWING	QTY. HVL.D.	STORES MAGASYN NO.	DRG. NO. CEE-TEK.	AMENDMENTS WYSIGINGS		
					NO.	NAME NAAM	DATE DATUM
1	CHEEK. WANG.	2	---	TN-268			
* 2	SCREW HEX. HEAD SKROEF, SESKANT-KOP Cu, Ni, Si. M10x35 L	2	54 / 1657	---	6	G.J.A	88-07-01
* 3	WASHER, LOCKING, INTERNAL TOOTH WASTER, SLUIT, BINNETAND M10	2	54 / 2688	---			AISI GR 304 WAS CME-131 DO REF 188/40 TK-VERW

* SEE NOTE 2
KYK OPM 2

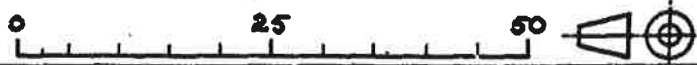


NOTE - OPMERKING

- 1 THE COPYRIGHT FOR THIS DESIGN IS HELD BY BRITISH INSULATED CALLENDERS CONSTRUCTION CO. LTD. COPYRIGHT © 197 SEE BICC DRG. NO. 55V/123/5.
DIE KOPIEREG VIR HIERDIE ONTWERP WORD DEUR "BRITISH INSULATED CALLENDERS CONSTRUCTION CO. LTD." VOORBEHOU KOPIEREG © 197 KYK BICC. TEK. NO. 55V/123/5.
- 2 ITEM 283 ALTERNATIVE MATERIAL: STAINLESS STEEL TO SPEC. AISI GR 304
ALTERNATIEWE MATERIAAL: VLEKRYSTAAL VOLG. SPES.

DIMENSIONS: MILLIMETRES.
AFMETINGS: MILLIMETER.

SOUTH AFRICAN TRANSPORT SERVICES.
SUID-AFRIKAANSE VERVOERDIENSTE.



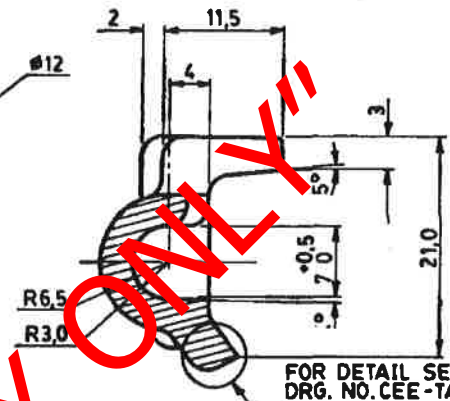
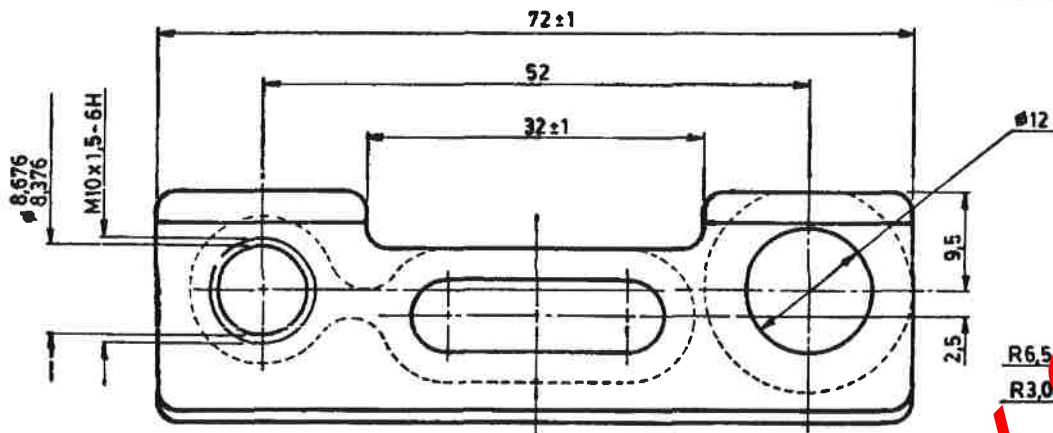
DRN. M. VERMEULEN GET.	GEN. TOLERANCES: LIN. ± ALG. TOLERANSIES: ANG. MOEK: ±	
TRCD. M. VERMEULEN NGT.	DO REF. T1/S1/15 TK-VERW	ENG. IR. G.A. WILLIAMS
CKD. B. STEWART NGS.	DATE 31-03-04 DATUM	
CHIEF ELECTRICAL ENGINEER ELEKTRIESE HOOFINGENIEUR		JOHANNESBURG for ns.

CLAMP, ELECTRICAL ASSEMBLY.
161mm² CONTACT WIRE.
KLAMP, ELEKTRIES. SAMESTEL.
161mm² HYDRAAD.
ELECTRIFICATION TYPES / ELEKTRIFIKASIE TIEPES: F.G.H.

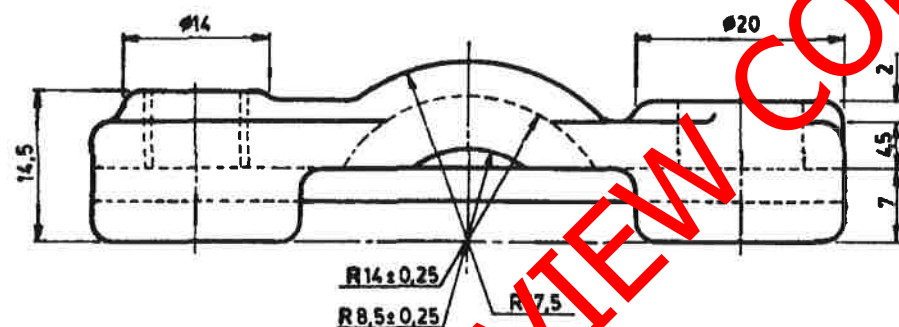
CEE-TMG-99, 100, 101, 102
CEE-TMG-108, 109, 110, 111
CEE-TP-171, 178
ASSY. DRG. SAMEST-TEK.

STORES MAGASYN ITEM NO
54 / 11643

DRAWING TEKENING NO CEE-
TN-264



FOR DETAIL SEE
DRG. NO. CEE-TA-184.
VIR DETAIL KYK
TEK. NO. CEE-TA-184.



DIMENSIONS : MILLIMETRES
AFMETINGS : MILLIMETER

MATERIAL - MATERIAAL
CASTING GIETSTUK Cu-Ni-Si ALLOY. ALLOOI.
SPEC. SPES. CEE-0063-85.
STORES ITEM MAGASYNITEM NO. _____

"PREVIEW COPY ONLY"

NOTES - OPMERKINGS

1. ALL UNSPECIFIED RADII 2mm.
ALLE ONGESPEFISEERDE RADIUSSE 2mm.
2. THE COPYRIGHT FOR THIS DESIGN IS HELD BY BRITISH INSULATED CALLENDERS CONSTRUCTION CO. LTD. COPYRIGHT © 197. SEE BICC DRG. NO. SEV/123/5.
DIE KOPIEREG VIR HIERDIE ONTWERP WORD DEUR „BRITISH INSULATED CALLENDERS CONSTRUCTION CO. LTD.“ VOORBEHOU KOPIEREG © 197. KYK BICC TEK. NO. SEV/123/5.



AMENDMENTS WYSIGINGS		
NO.	NAME NAAM	DATE DATUM
7.	<i>D. Mans</i>	86/05/28

DIMENSIONS REVISED AND REDRAWN.
AFMETINGS HERSIEN EN OORGETEKEN.
D O REF TK-VERW T86/14

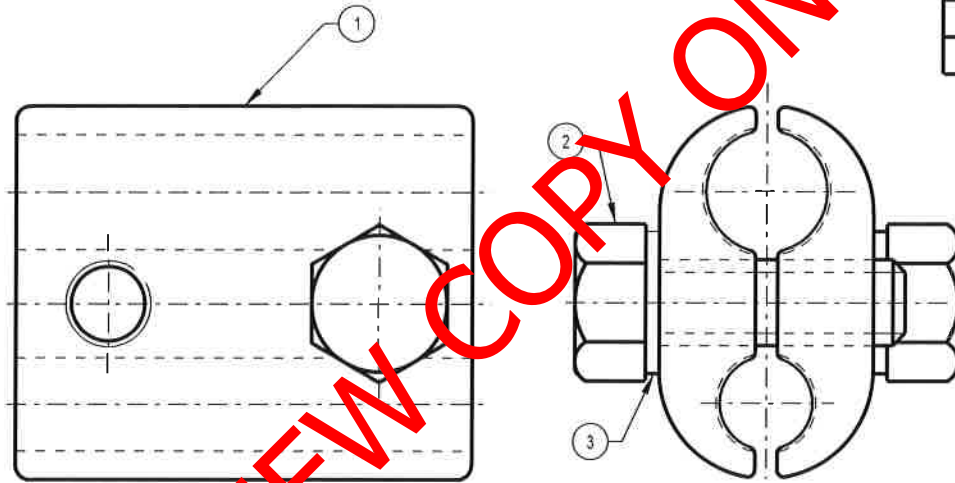
CEE-TN-264
CLASS/ASSY. DRG. KLAS/SAMEST.-TEK.
MODULUS ITEM NO. (M) 54/11618

DRN. M. VERMEULEN GET.	GEN. TOLERANCES: LIN. ± 0,5 ALG. TOLERANSIES: ANG/HOEK ± 0°15'	
TRCD. W. F. MANS NGT.	D.O. REF. T1/80/15 TK-VERW	ENG. IR
CKD. B. STEWART NGS.	DATE 81-03-04 DATUM	G. A. WILLIAMS for ns.
CHIEF ELECTRICAL ENGINEER ELEKTRIESE HOOFINGENIEUR JOHANNESBURG		
SOUTH AFRICAN TRANSPORT SERVICES SUID-AFRIKAANSE VERVOERDIENSTE		

ELECTRIFICATION TYPES : E, F, G AND H
CLAMP, ELECTRICAL
161 mm² CONTACT WIRE
ELEKTRIFIKASIE TIPES : E, F, G EN H
KLAMP, ELEKTRIES
161 mm² RYDRAAD

PREVIOUS VORIGE	ITEM NO.
DRAWING NO. CEE-TN-268	
SHEET VEL	OF VAN

STORES ITEM NO	CONDUCTOR SIZES
54/000766	100mm ² / 80mm ² - 50mm ²
54/000791	100mm ² / 80mm ² - 100mm ² / 80mm ²
54/002728	160mm ² - 50mm ²
54/002753	160mm ² - 100mm ² / 80mm ²
54/002777	160mm ² - 160mm ²
54/000843	250mm ² - 50mm ²
54/000867	250mm ² - 100mm ² / 80mm ²
54/000880	250mm ² - 160mm ²
54/000907	250mm ² - 250mm ²



NOTE
Use Item 4 on the 250mm² side when this clamp is used for 162mm² ACSR (Tiger) Catenary.

Item 3 Alternative material: Stainless steel to Specification AISI Grade 304.

ITEM NO	DESCRIPTION	QTY	STORES ITEM NO	DRAWING NO
4	Conductor splice liner, 162mm ² ACSR Catenary Wire (See Note)	2	-	CEE-TNB-0090
3	Washer, Lock, Phosphor Bronze, Internally Toolhed, M12 to Specification BS.407.	2	54/002704	-
2	Screw, Machine, Cu-Ni-Si, Hex. Head, M12 x 6g - 35L to Specification CEE-0063.	2	54/003670	-
1	Parallel half clamp.	2	-	CEE-TNB-0054

© COPYRIGHT PROTECTED. PREPARED BY CENTRAL DRAWING OFFICE

DIMENSIONS : mm SCALE : 1 : 1
TOLERANCE : LIN± - ANG± - ITEM NO : -
MATERIAL : -
VERSION INFO : TITLE REVISED.

Digitally signed by
Ludwig Borchard
Date: 2011.11.25
08:35:57 +02'00'

APPROVED

Digitally signed by
Ludwig Borchard
Date: 2011.11.25
08:36:12 +02'00'

AUTHORISED

PARALLEL CLAMP FOR
VARIOUS CONDUCTOR SIZES.

TRANSNET
freight rail

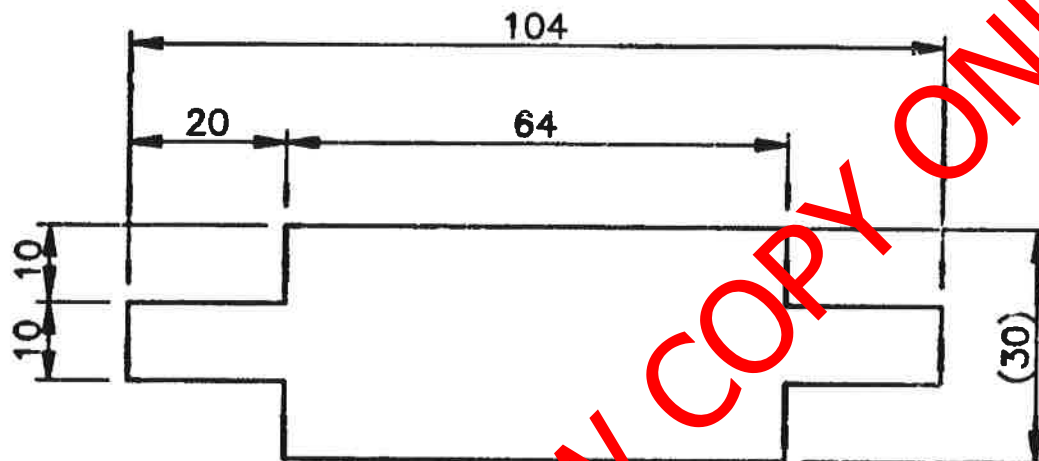
CEE-TNB-0055

AMENDMENT 5

A4

AMENDMENTS

NO	NAME	DATE



"PREVIEW COPY ONLY"

NOTE
FOR CONDUCTOR SPLICE SEE DRG NO CEE-TNB-55

DIMENSIONS: mm
SCALE: 1:1

MATERIAL: ITEM NO — BIMETAL STRIP, 15% Cu, 85% Al x 1 THK x 30

DO REF: T98/011 GEN TOL: LIN± ± 1 ANG± -

DRN: J VON ABO CKD: JVT DATE: 98-02-25

ENG: HA SLIER LO BORCHARD for CHIEF ENG

CONDUCTOR SPLICE LINER
CONDUCTOR SPLICE



DRG NO CEE-
TNB-90

SHT — OF —

INFRASTRUCTURE
(ELECTRICAL)



ITEM	DESCRIPTION	QTY	STORES ITEM NO	DRAWING NO CEE-	AMENDMENTS		
					NO	NAME	DATE
1	Aluminium, Grade 6063	2	-	-	1		17/4/2007
2	Bolt & Nut, Stainless steel, Hex. M12 x 70L	2	-	-			
3	Washer, Stainless steel, Flat, Round, M12	2	-	-			
4	Washer, Lock, Stainless steel, M12	2	-	-			
5	Permanent Forged Copper Insert (2mm Min. Thickness)	2	-	-			

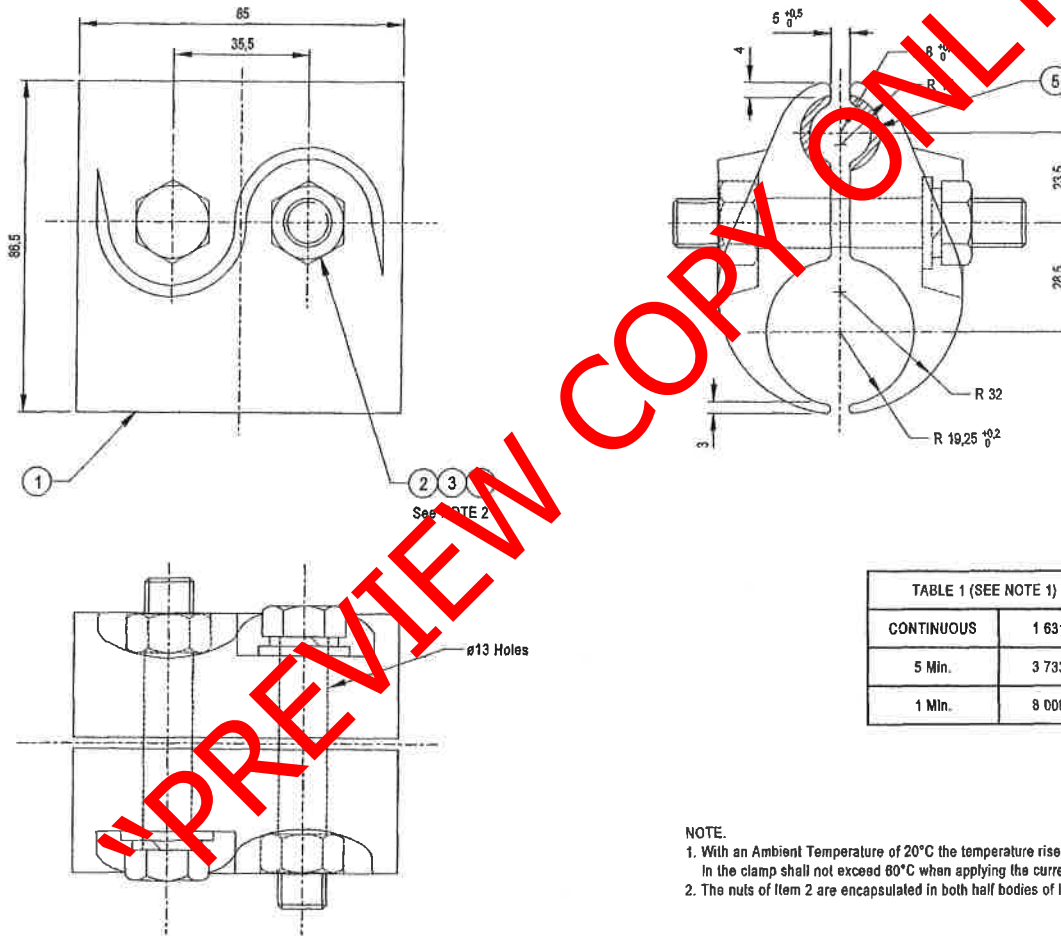


TABLE 1 (SEE NOTE 1)

CONTINUOUS	1 631A
5 Min.	3 733A
1 Min.	8 008A

NOTE:
 1. With an Ambient Temperature of 20°C the temperature rise (change in Temperature) in the clamp shall not exceed 80°C when applying the current in Table 1.
 2. The nuts of Item 2 are encapsulated in both half bodies of Item 1.

© COPYRIGHT PROTECTED. PREPARED BY CENTRAL DRAWING OFFICE.

DO REF: T98/060	GEN TOL: LIN ± 1 ANG ±	
DRN: J. VON ABO	CKD: L. E. WOOD	DATE: 98-10-16
ENG: H. A. SLIER	H. A. SLIER	for CHIEF ENG

CENTRAL DRAWING OFFICE

ALUMINIUM CLAMP WITH BIMETAL INSERTION
 800mm² ALUMINIUM TO 160mm² COPPER WIRE

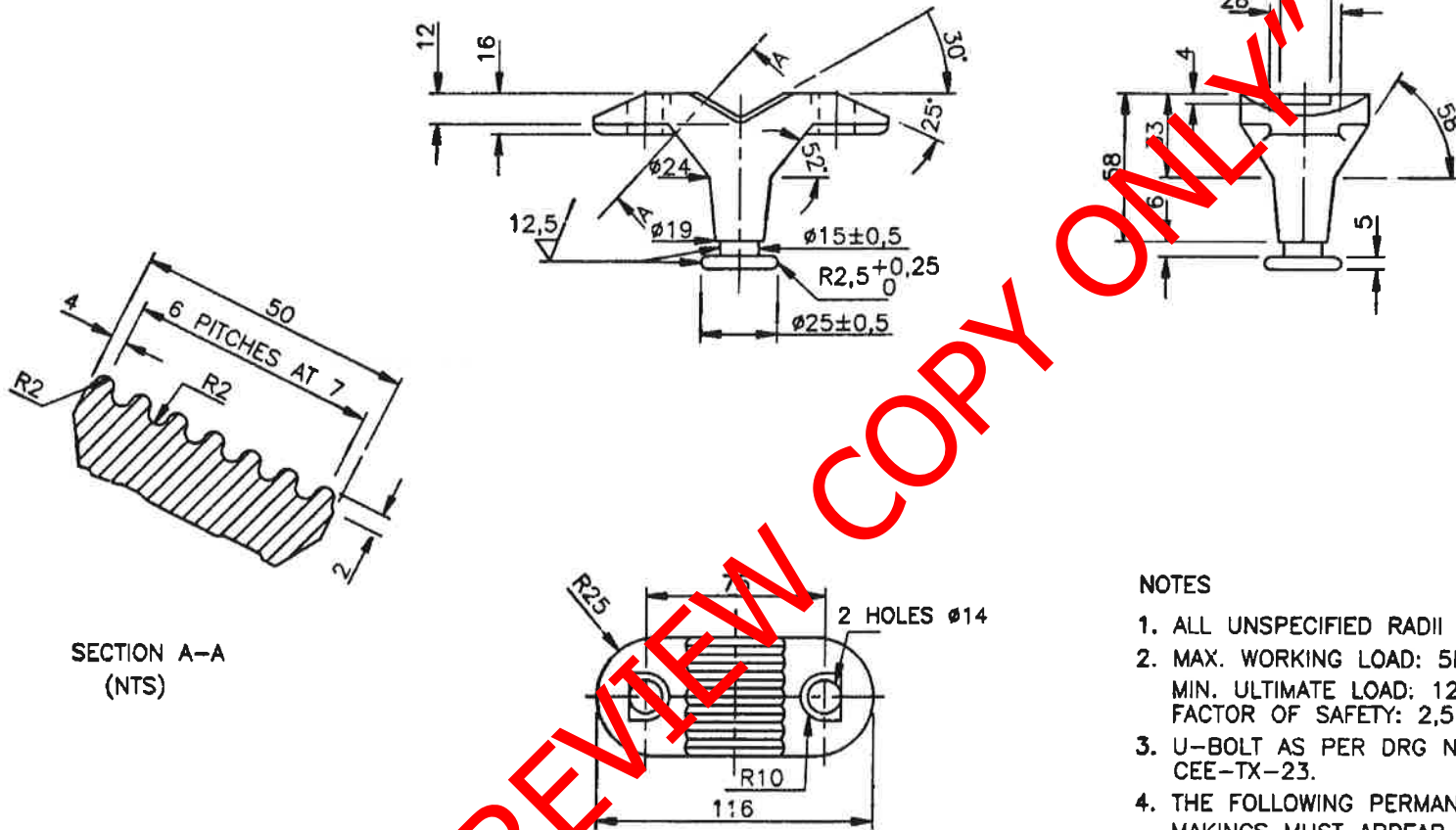
STORES ITEM NO
54/016925

DIMENSIONS: mm
SCALE: 1:1

A2

DRAWING NO **CEE -**
TNB-0093

SHEET - OF -



SECTION A-A
(NTS)

NOTES

1. ALL UNSPECIFIED RADII R4.
2. MAX. WORKING LOAD: 5KN
MIN. ULTIMATE LOAD: 12,5KN
FACTOR OF SAFETY: 2,5
3. U-BOLT AS PER DRG NO CEE-TX-23.
4. THE FOLLOWING PERMANENT MAKINGS MUST APPEAR ON THIS ARTICLE:
 - a. SPOORNET b. MAKER'S IDENTIFICATION c. BATCH NUMBER.
5. FINISH: ZINC COAT TO SABS 763 FOR CONDITIONS IN SITU.

AMENDMENTS

NO	NAME	DATE
1	JVT	95-09-1
REVISED. DRG NO WAS CEE-TN-360. DO REF: T95/052		
2	JVT	97-05-07
DIMENSION $\phi 25 \pm 0,5$ INCORRECTLY SHOWN AS 15. DO REF: T97/008		

MATERIAL: ITEM NO _____ SPHEROIDAL GRAPHITE IRON TO SPEC SABS 936 GRADE SG 50

DO REF: T2/84/21 GEN TOL: LIN \pm 1,0 ANG \pm 1

DRN: G ABRAHAM CKD: _____ DATE: 84-03-02

ENG: R BUSH P.P.L.C. for CHIEF ENG

ELECTRICAL CLAMP

SWIVEL CLAMP RETAINER FOR 107/161 mm² Cu CONTACT WIRE

INFRASTRUCTURE
(ELECTRICAL)



STORES ITEM NO
54/5215

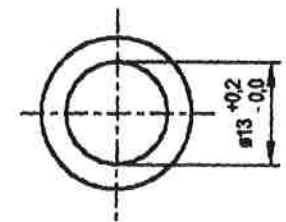
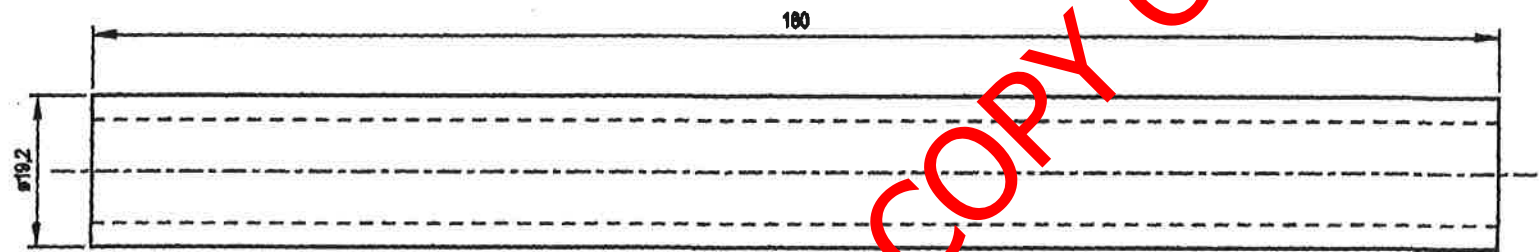
DIMENSIONS: mm
SCALE: 1:2



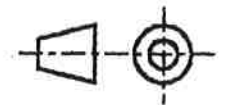
DRAWING NO CEE-
TND-25

SHEET - OF -

"PREVIEW COPY ONLY"



NOTE
MINIMUM OF 3 (THREE) CRIMPS (EACH CRIMP = 25mm WIDE).



© COPYRIGHT PROTECTED

DIMENSIONS : mm SCALE : 1 : 1
TOLERANCE : LIN $\pm 0,5$ ANG \pm ITEM NO : -
MATERIAL : STEEL, TUBE, $\phi 19,2$ O.D. AND $\phi 13$ I.D.
VERSION INFO : -

DO REF : CDO/2357
ECP REF : -
DRAWN : JR Anthony
DESIGNED : -
CHECKED : JD van Dyk

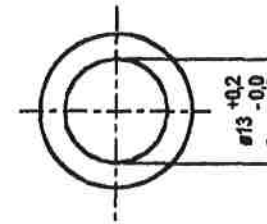
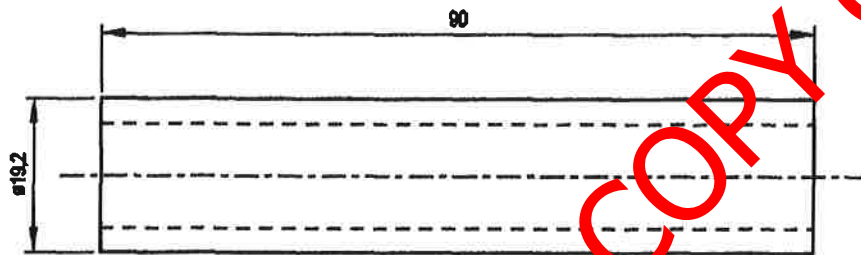
DATE: 12/2/2003

APPROVED
AUTHORISED

CENTRAL DRAWING OFFICE
INNER SPLICE, MID- SPAN
STEEL REINFORCING
"DEER" ACSR CONDUCTOR

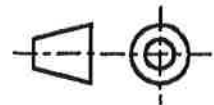
SPOORNET

BBB3594
VERSION 1



"PREVIEW COPY ONLY"

NOTE
MINIMUM OF 3 (THREE) CRIMPS (EACH CRIMP = 25mm WIDE).




© COPYRIGHT PROTECTED

DIMENSIONS : mm **SCALE** : 1 : 1
TOLERANCE : LIN ± 0,5 ANG ± - **ITEM NO.** : -
MATERIAL : STEEL, TUBE, 19,2 O.D. AND 13 I.D.
VERSION INFO : -

DO REF : CDO/2357
ECP REF : -
DRAWN : JR Anthony
DESIGNED : -
CHECKED : JD van Dyk

DATE: 12/3/2003

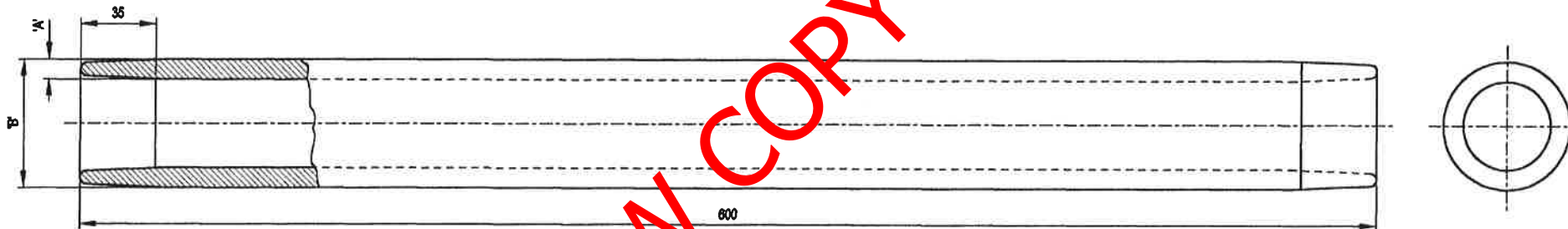
APPROVED

 AUTHORIZED

CENTRAL DRAWING OFFICE
INNER SPLICE
STEEL REINFORCING
"DEER" ACSR CONDUCTOR



BBB3596
 VERSION 1

CONDUCTOR	"DEER" TO "DEER" (NOTE 3)	"LAPWING" TO "LAPWING" (NOTE 3)	"DEER" TO 600mm ² AAC (NOTE 3)	"LAPWING" TO 800mm ² AAC (NOTE 3)
DIMENSION 'A'	10,72 ± 0,45	8,1 ± 0,45	10,72 ± 0,45	8,1 ± 0,45
DIMENSION 'B'	63,98 ± 0,2	58,72 ± 0,2	63,98 ± 0,2	58,72 ± 0,2
INNER SPLICE	DRG NO BBB3594 (NOTE 3)	DRG NO BBB3595 (NOTE 3)	DRG NO BBB3596 (NOTE 3)	DRG NO BBB3597 (NOTE 3)
STORES ITEM NO	54/33469	54/33470	54/33471	54/33494



NOTES


1. FOR ARRANGEMENT DETAIL OF "DEER" TO "DEER" OR "LAPWING" TO "LAPWING" SEE DRG NO BBB3592.
2. FOR ARRANGEMENT DETAIL OF 500mm² OR 800mm² AAC TO "DEER" OR "LAPWING" ACSR SEE DRG NO BBB3591.
3. EACH SPLICE KIT MUST BE ACCOMPANIED BY THE APPROPRIATE INNER SPLICE.
4. FOR TENSION SPLICE OR CRIMP LENGTH SEE DRG NO CEE-TNB-28.

"PREVIEW COPY ONLY"

© COPYRIGHT PROTECTED

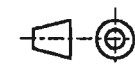
DIMENSIONS : mm SCALE : 1 : 2
 TOLERANCE : LIN ± 0,5 ANG ± - ITEM NO : -
 MATERIAL : ALUMINIUM TO SPEC CEE.0038.
 VERSION INFO : -

DO REF : CDO/2357
 ECP REF : -
 DRAWN : JR Anthony
 DESIGNED : -
 CHECKED : JD van Dyk

DATE: 12/2/2003

 APPROVED
 AUTHORIZED

CENTRAL DRAWING OFFICE

**TENSION SPLICE (600mm LONG) FOR
 ACSR TO ACSR OR ACSR TO AAC CONDUCTORS**



 **SPOORNET**

BBB3593
 VERSION 1

A3