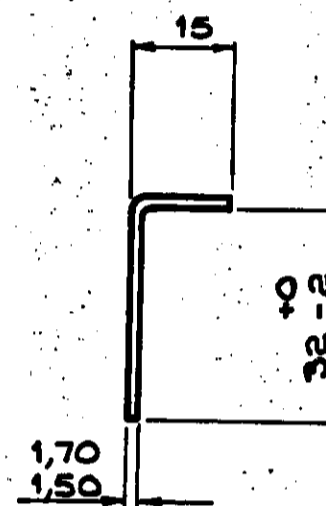
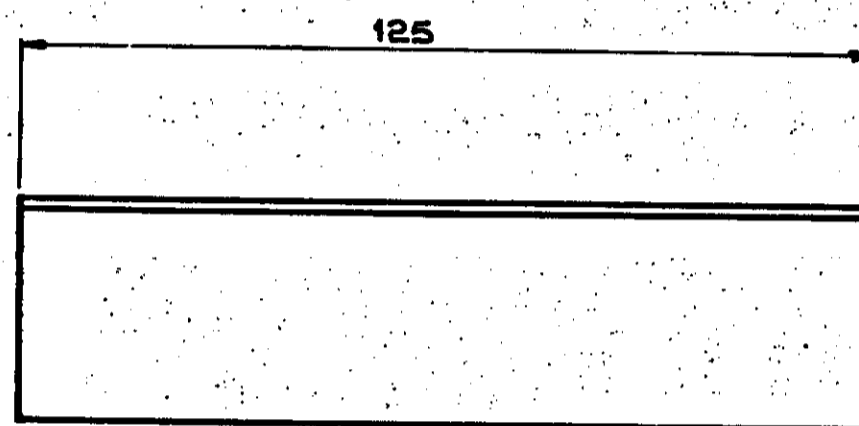
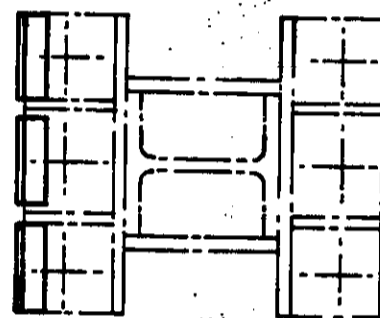


TRACK SIDE  
SPOORKANT.



FINISH. / AFWERKING.  
ZINC COAT TO SPEC.  
SINKBEDEK VOLG. SPES. SABS 763.

NOTE. / OPMERKING.  
THIS DRG. SUPERSEDES DRG. NO CEE-54/110276.  
HIERDIE TEK. VERVANG TEK. NO CEE-54/110276.

DIMENSIONS: MILLIMETRES.  
AFMETINGS: MILLIMETER.

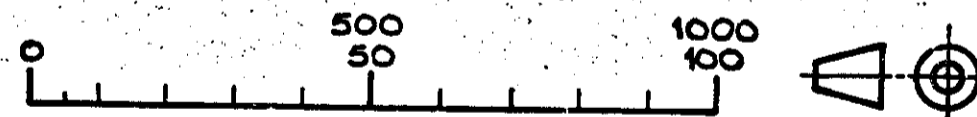
MATERIAL - MATERIAAL  
SHEET STEEL.  
DUNPLAAT, STAAL  
SPEC. CME 9 SYM. 8.  
SPES. CME 9 SIM. 8.

STORES ITEM NO.(M)/  
MAGASYNITEM NO.(M)/

SOUTH AFRICAN TRANSPORT SERVICES.  
SUID-AFRIKAANSE VERVOERDIENSTE.

DRN. GET.	B.Stewart.	GEN. TOLERANCES: LIN. ± 0. ALG. TOLERANSIES: ANS./HOEK ± 1°
TRCD. NGT.	B.Stewart.	D.O. REF. T80/80. ENG. IR.
CHKD. NGS.	J.SWIEGERS.	DATE. 80-06-27
CHIEF ELECTRICAL ENGINEER ELEKTRIESE HOOFINGENIEUR		<i>[Signature]</i> JOHANNESBURG.

PACKING PIECE.  
PROVISION OF BACK RAKE ON CANTILEVER STRUCTURES.  
VULSTUK.  
VOORSIENING VAN TERUGLEUNING OP VRYDRAER-STRUKTURE.



AMENDMENTS.  
WYSIGINGS.

NO.	NAME. NAAM.	DATE. DATUM.
1	H. KRÜGER	89-06-19

ASSY DRG NO ADDED.  
SAMEST-TEK NO BYGEVOEG.  
D O REF T 89/007  
TK-VERW T 89/007

CEE-TMGC-1  
CEE-TMG-39,60

ASSY DRG. - SAMEST-TEK.

DRAWING NO. CEE-  
TEKENING NO. CEE-  
TMHF-95

A3

Δ  
2

Δ  
3

Δ

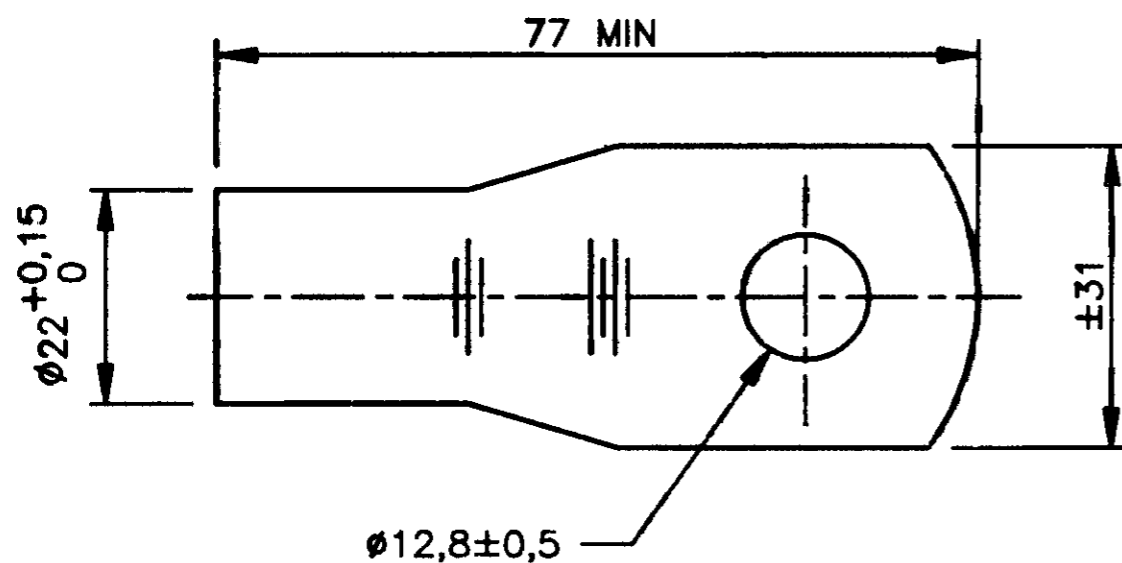
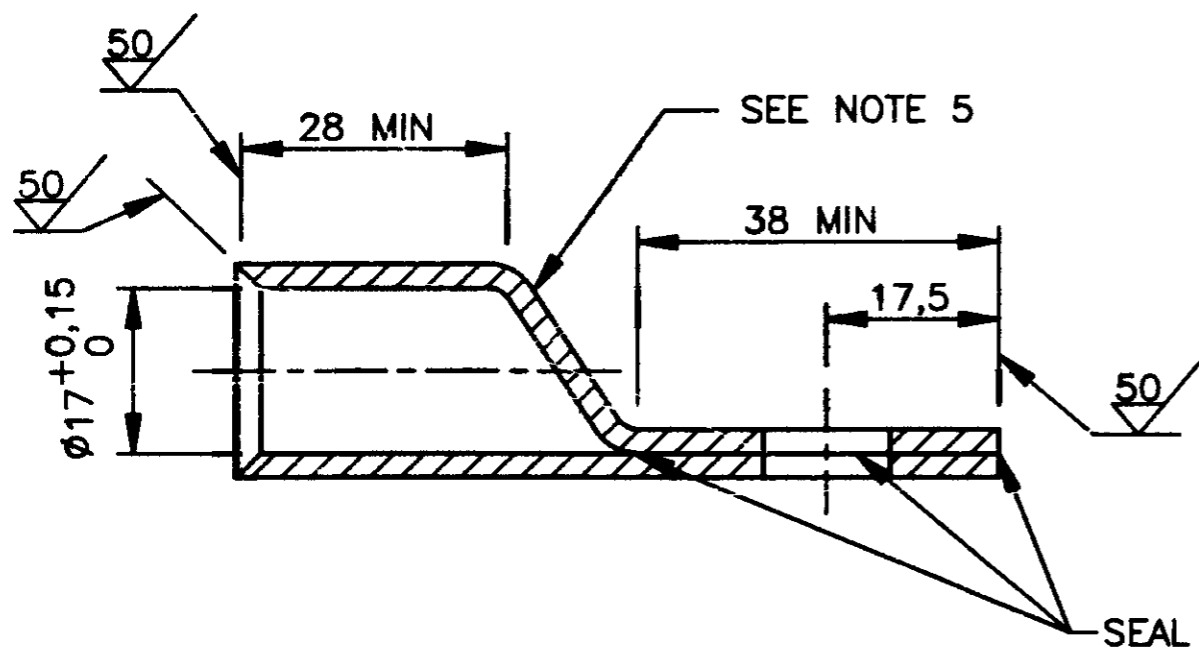
Δ  
4

Δ  
4

Δ

Δ  
3

Δ  
2



NOTES

1. HOLE: AFTER PUNCHING OR DRILLING, BURRS TO BE REMOVED.
2. LUG: TO BE COMPLETELY TINNED, SEALING THE EDGES MARKED "SEAL" TO SPEC. BS.1872 Sn 12C.
3. SPADE SURFACES TO BE FLAT.
4. LUG WILL BE CRIMPED INTO HEXAGONAL CONFIGURATION BY MEANS OF HYDRAULIC COMPRESSION TOOL. (DRG NO CEE-PP-15)
5. INSPECTION HOLE NOT TO BE PROVIDED.
6. THIS DRAWING IS FOR TENDER PURPOSES ONLY.
7. DIMENSIONS NOT INDICATED TO BE DECIDED BY TENDERER.

AMENDMENTS

NO	NAME	DATE
1	L E WOOD	96-08-01

REDRAWN. DRG NO WAS CEE-TN-364. DO REF: T96/009

MATERIAL: ITEM NO —, COPPER TO SPEC. BS.1977

DO REF: Y74/34	GEN TOL: LIN± 1	ANG± —
DRN:A ZAZWORKA	CKD: S MOUTON	DATE: 74-05-08
ENG: —	TC BROOK	for CHIEF ENG

TERMINAL, LUG  
CABLE SIZE 160mm<sup>2</sup>

INFRASTRUCTURE  
(ELECTRICAL)



DRG NO CEE--  
TNB-58

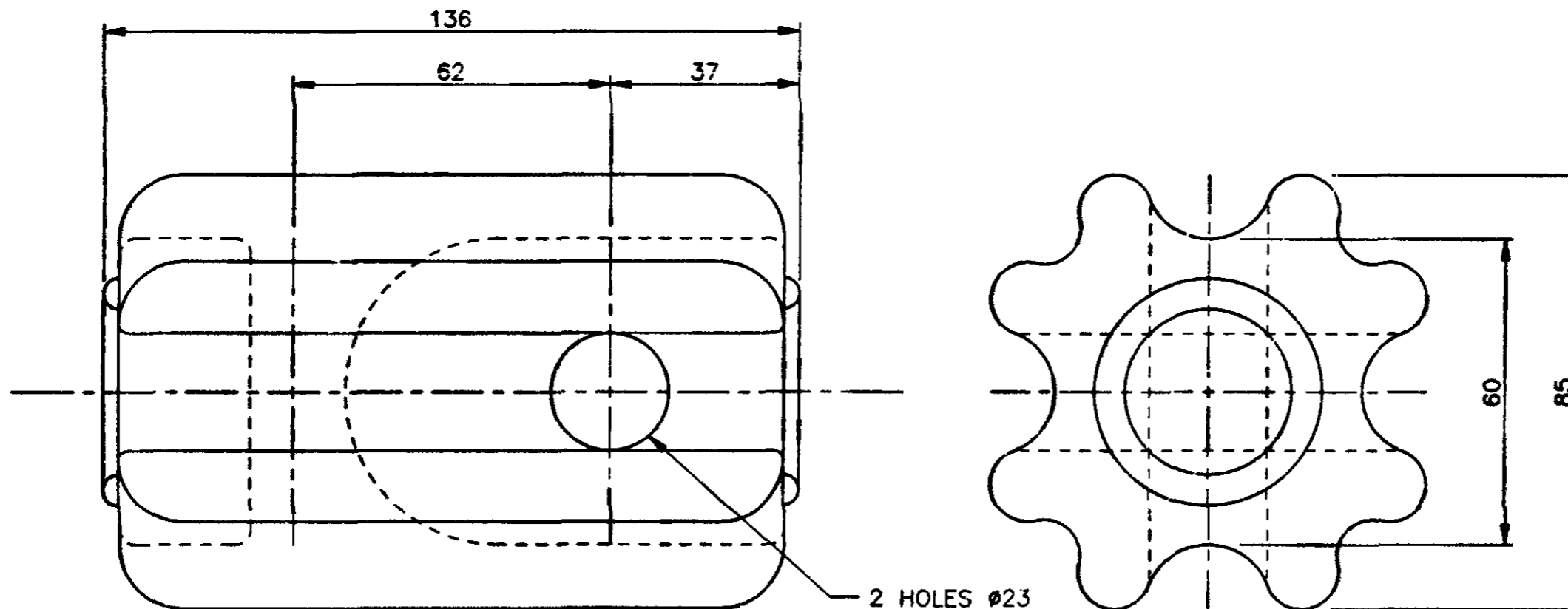
SHT — OF —

T0001015

AMENDMENTS

NO	NAME	DATE
1	JVT	97-09-05

REVISED, DRAWING NO  
WAS TN-388.  
DO REF: T96/021



NOTE  
INSULATOR TO HAVE PERMANENT MARK TO IDENTIFY

INFORMATION  
 DRY FLASH OVER: 35 000V  
 WET FLASH OVER: 30 000V  
 ULTIMATE TENSILE STRENGTH: 110kN  
 FACTOR OF SAFETY: 2,5  
 WORKING LOAD: 44kN

STORES ITEM NO  
54/16254

DIMENSIONS: mm  
SCALE: 1:1

MATERIAL: GLAZED PORCELAIN

DO REF: T1/85/6	GEN TOL: LIN± - ANG± -
DRN: A OBERHÖLZER	CKD: A LOTTERING DATE: 85/11/29
ENG: R.B.	RS MANN for CHIEF ENG

INSULATOR, STRAIN  
STAY WIRE ARRANGEMENT

INFRASTRUCTURE  
(ELECTRICAL)



A3

DRAWING NO CEE-  
TNC-22

SHEET - OF -